



27th International Conference of
Alzheimer's Disease International
7-10 March 2012
ExCeL London, UK

SCIENCE FACT FICTION

Conference Programme



www.adi2012.org



Leading the fight
against dementia
**Alzheimer's
Society**



One shared vision for the future. Exponential possibilities in **Alzheimer's** care.

The Alzheimer's Immunotherapy Program of Janssen Alzheimer Immunotherapy and Pfizer Inc. is an equal collaboration committed to researching and developing selective products for the treatment and/or prevention of Alzheimer's disease.

Together, we believe we can reduce the burden of disease through early intervention in the illness. We are dedicated to delivering comprehensive and integrated solutions that help address the needs of people impacted by Alzheimer's disease.



**ALZHEIMER'S
IMMUNOTHERAPY PROGRAM**
INNOVATION TO REMEMBER™





Contents

Welcome Letters	4
Industry Partners	7
About Alzheimer's Disease International / Alzheimer's Society	8
Conference Committees	9
General Information	10
ExCeL Centre Layout	11
Plan of the ICC Capital Suite	12
Exhibition Layout	18
Poster Board Layout	21
Local Information	22
Social Events and Activities	23
Keynote Speakers	24
Scientific Programme	29
Programme at a Glance	30
Wednesday 7 March	32
Thursday 8 March	33
Friday 9 March	40
Saturday 10 March	48
Poster Presentations	52
Thursday 8 March	52
Friday 9 March	60
Author's Index	68
Notes	83



Find us on facebook and twitter at the following addresses:

www.facebook.com/alzheimersdiseaseinternational

www.twitter.com/AlzDisInt

Welcome Letter

Daisy Acosta, Alzheimer's Disease International



Dear friends & colleagues,

It is a great pleasure to welcome you to our 27th Annual International Conference in London. Alongside Alzheimer's Society, we have developed a programme that we feel has something for everyone, regardless of whether you are involved in the cause in a personal or professional capacity.

Whether your interest lies in the medical, scientific or research fields; care and support services; influencing policy and change; treatment and non-pharmacological therapies; or you would simply like some more information about dementia, the full and exciting programme is sure to cater for your needs. It is important to remember that, regardless of the information you are seeking at this conference, we are all working towards the same objective to improve the lives of people with dementia and their carers.

I am delighted that we are playing host to such a large delegation of people with dementia at the conference this year. We hope that you enjoy sharing your experiences and forming new friendships. Your contribution and involvement are greatly appreciated.

On behalf of all at ADI, I would like to thank the team at Alzheimer's Society for their huge commitment to making this conference such a memorable event for all involved. It has been a great pleasure working alongside you.

We hope you will find the conference both enjoyable and valuable, with plenty of opportunities to make new connections and take on board some information from your friends and peers. We hope this will assist you in furthering your work to improve the lives of people with dementia and carers in your country.

With best wishes,

Daisy Acosta
Chairman,
Alzheimer's Disease International



Welcome Letter

Jacob Roy Kuriakose, Alzheimer's Disease International



Dear friends & colleagues,

It is indeed a great honour and privilege as the Chairman Elect of ADI to welcome you to our 27th Annual International Conference hosted with Alzheimer's Society in the beautiful, vibrant and historic city of London.

The conference theme "Science Fact Fiction" reflects the wide range of topics that will be covered in this conference. There will be some outstanding presentations, selected from a record number of abstract submissions. I am confident that this will be an excellent meeting with a variety of topics to satisfy the needs of every participant.

London, one of the most sought after tourist destinations, will be at its best at this time of the year especially with the Olympics and Paralympics only a few months away. The organisers have worked hard to create a programme with a mix of excellent academic presentations and enjoyable social events.

This will be a very good opportunity for participants from across the globe to explore this incredible city, renew friendships and develop new networks. I am sure this will be a landmark event and all of you will go back enriched with sweet memories.

I wish you all a productive and exciting conference.

Jacob Roy Kuriakose
Chairman Elect,
Alzheimer's Disease International

Welcome Letter

Andrew Ketteringham, Alzheimer's Society



Dear friends and colleagues,

On behalf of Alzheimer's Society, I want to wish you a very warm welcome to the 27th Alzheimer's Disease International Conference, here in London.

We are delighted to be hosting this event, for the first time. It is another expression of the support we wish to give to ADI in the global campaign to raise awareness of dementia and make the condition a worldwide health priority.

When we first approached ADI to bid for the conference to be in London, it was done on the basis that we have something to celebrate here in the UK. Awareness of dementia has risen sharply; the four departments of health (in England, Wales, Northern Ireland and Scotland) have all instituted programmes to combat the condition. We felt Alzheimer's Society had much to be proud of in helping to take dementia from out of the shadows but that we need now to shine a light on dementia so that understanding also improves. With the imagery of the Olympic torch in our minds, where better than London to hold the 2012 conference?

I'm delighted that this will be one of the largest ADI conferences in recent years. I'm also very pleased that we have more people who live with the condition here than at any past ADI conference. It is our view that we must give people living with dementia a platform to tell the world what is needed to enable them to lead life to the full. No one tells that story more powerfully than them. Let this be a conference that listens to them as well as broadcasting to the world that dementia needs to be taken more seriously.

Enjoy the conference and London.

Andrew Ketteringham
Conference Chair
Alzheimer's Society



Industry Partners

Platinum Sponsors



Silver Sponsor



Bronze Sponsors



Sponsored Symposia

Special symposium:
Wednesday 07 March 2012



Breakfast symposium:
Thursday 08 March 2012



Lunchtime symposium:
Thursday 08 March 2012



Evening symposium:
Thursday 08 March 2012



Breakfast symposium:
Friday 09 March 2012



Evening symposium:
Friday 09 March 2012



The Garden of Memory
is supported by:



Other Sponsors

CABI
Canadian Dementia Knowledge Translation Network
Dementia UK
EU Joint Programme in Neurodegenerative Disease Research (JPND)
European Reminiscence Network
GE Healthcare (funding for travel grants for people with dementia)
Health Professions Press
Home Instead Senior Care
IAHSA
IOS Press
Jenry Ltd
Suzhou Joekai Biotechnology LLC
King's College London, Institute of Psychiatry
Lundbeck (funding for travel grants for people with dementia)
National End of Life Care Programme
OMG Plc
Project Lifesaver International
Re:Cognition Health
REPoD
Robert Santulli
University of Bradford
Wisepress

We would also like to acknowledge the support of ExCeL London and Leith's in sponsoring catering provided for people with dementia.



**Alzheimer's Disease
International**

Leading the fight
against dementia

**Alzheimer's
Society**

About Alzheimer's Disease International

Alzheimer's Disease International (ADI) is the international federation of over 75 national Alzheimer associations around the world. ADI was founded in 1984 to help establish and strengthen Alzheimer associations throughout the world, through the exchange of information, skills and models of best practice. ADI wants to improve the quality of life for people with dementia and their families and to raise global awareness about Alzheimer's disease and all other causes of dementia.

Contact details

Alzheimer's Disease International
64 Great Suffolk Street
London
SE1 0BL
UK

Tel: +44 (0) 20 7981 0880
Fax: +44 (0) 80 7928 2357
Email: info@alz.co.uk
Web: www.alz.co.uk

About Alzheimer's Society

Alzheimer's Society is a membership organisation, which works to improve the quality of life of people affected by dementia in England, Wales and Northern Ireland.

Many of our 20,000 members have personal experience of dementia, as carers, health professionals or people with dementia themselves, and their experiences help to inform our work.

Contact details

Alzheimer's Society
Devon House
58 St Katharine's Way
London
E1W 1LB
UK

Tel: +44 (0) 20 7423 3500
Website: www.alzheimers.org.uk



Conference Committees

ADI 2012 Local Organising Committee

Name	Position
Andrew Ketteringham	Conference Chair
Alix Wooding	Corporate Partnership Manager
Carolyn Popham	ADI Board Member
Clive Ballard	Scientific Programme Committee Chair
Graham Browne	Person Living with Dementia
Hannah Clack	Corporate Partnership Manager

ADI 2012 International Advisory Board

Name	Country
Akira Homma	Japan
Alexander Kurz	Germany
Amit Dias	India
Anders Wimo	Sweden
Bengt Winblad	Sweden
Daisy Acosta	Dominican Republic
Ed Chiu	Australia
Maryam Noroozian	Iran
Faraneh Farin	Iran
Graham Stokes	United Kingdom
Jeff Cummings	United States of America
Johan Vos	New Zealand
Kenneth Rockwood	Canada
Linda Teri	United States of America
Mariella Guerra	Peru
Murna Downs	United Kingdom
Nori Graham	United Kingdom
Phillip Scheltens	Netherlands
Sandrine Andrieu	France

ADI 2012 Scientific Programme Committee

Name	Country
Clive Ballard	Chair, United Kingdom
Marc Wortmann	Secretary, United Kingdom
Bengt Winblad	Sweden
Bruno Dubois	France
Daisy Acosta	Dominican Republic
Daphne Wallace	United Kingdom
Howard Chertkow	Canada
Jacobo Mintzer	United States of America
Julie Williams	United Kingdom
Lynn Chenoweth	Australia
Mike Splaine	United States of America
Murat Emre	Turkey
Ryuta Kawashima	Japan

International People with Dementia Programme Committee

Name	Country
Peter Ashley	Chair, United Kingdom
Graham Browne	United Kingdom
Christine Bryden	Australia
Peter Dunlop	United Kingdom
Lynda Hogg	Scotland, United Kingdom
Brenda Hounam	Canada
Agnes Houston	Scotland, United Kingdom
Lynn Jackson	Canada
Ann Johnson	United Kingdom
Jan Phillips	United States of America
Heather Roberts	United Kingdom
Helga Rohra	Germany
Richard Taylor	United States of America
Daphne Wallace	United Kingdom

Where will the conference take place?

The ADI conference will take place at the ICC, which is located at the East End of the ExCeL London complex. Delegates arriving by DLR should alight at Prince Regent (not Custom House). You will enter the ICC on Level 1.

The majority of the conference will take place either in the Capital Hall, located on Level 0 of the ICC, or the Capital Suite, located on Level 3 of the ICC.

For plans of the ICC Capital Suite and Capital Hall please see pages 12 and 18.

Activities in the Capital Hall (Level 0)

Registration
Exhibition
Internet Cafe
Members Showcase
Poster Presentations

Activities in the Capital Suite (Level 3)

Plenary Sessions (Rooms 7-12)
Parallel Sessions (Rooms 4, 9 & 10, 7 & 12 and 14-16)
Living with Dementia Sessions (Rooms 8 & 11)
ADI Workshops (Room 17)
Satellite Symposia (Rooms 14-16)
Speaker Preview Room (Room 6)
Press Office (Room 2)
ADI Office (Room 5)
Room for People with Dementia (Room 1)
ADI Cinema (Room 3)

Information for People with Dementia

Welcome Meeting

To welcome delegates with dementia and their accompanying person we will be holding an informal welcome meeting in Room 4, Capital Suite at 17:00 on Wednesday 7 March. This will provide people with the opportunity to get to know one another before the conference starts and be provided with supporting information.

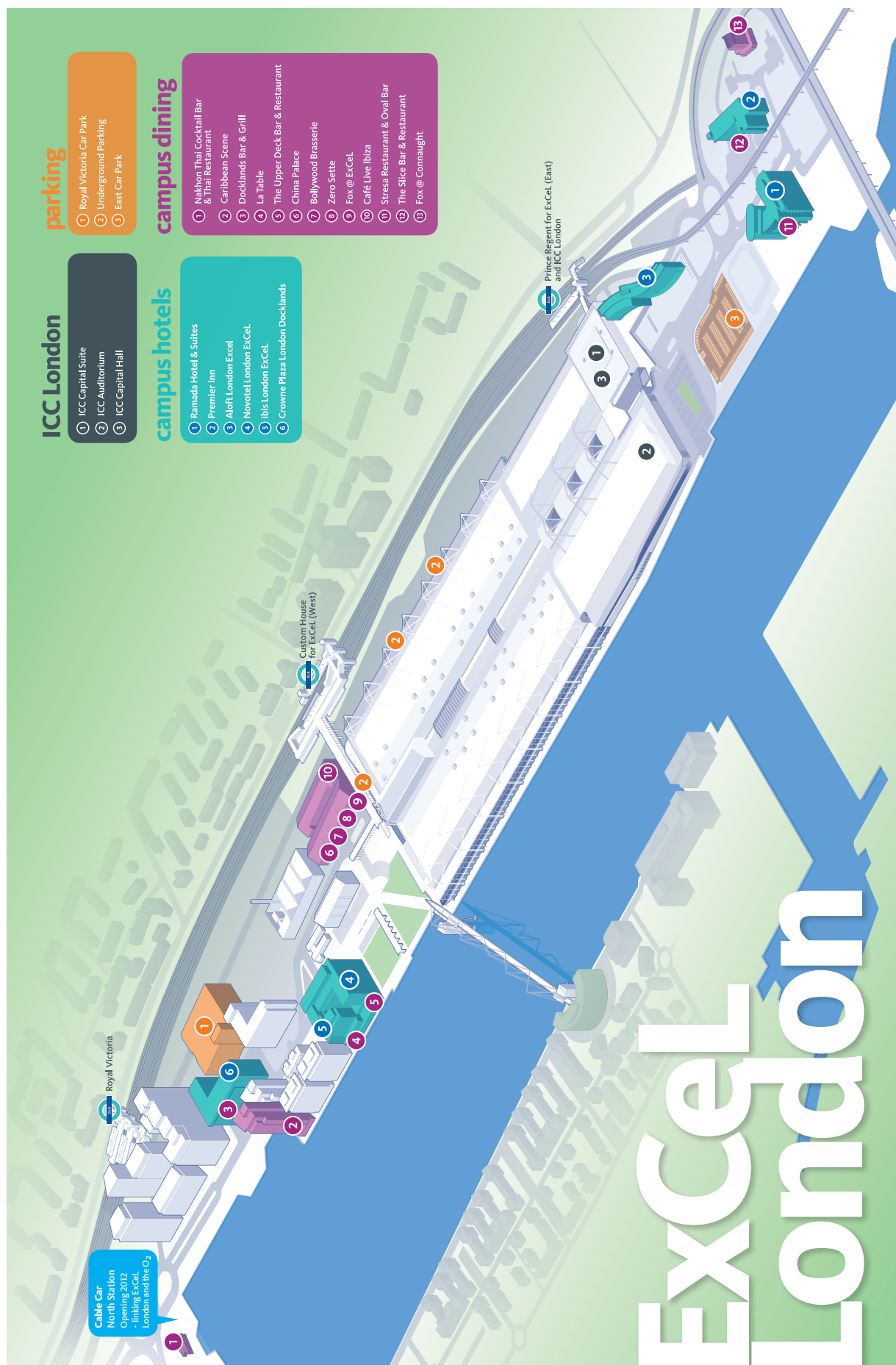
Room for people with dementia

(Room 1, Capital Suite, Level 3)

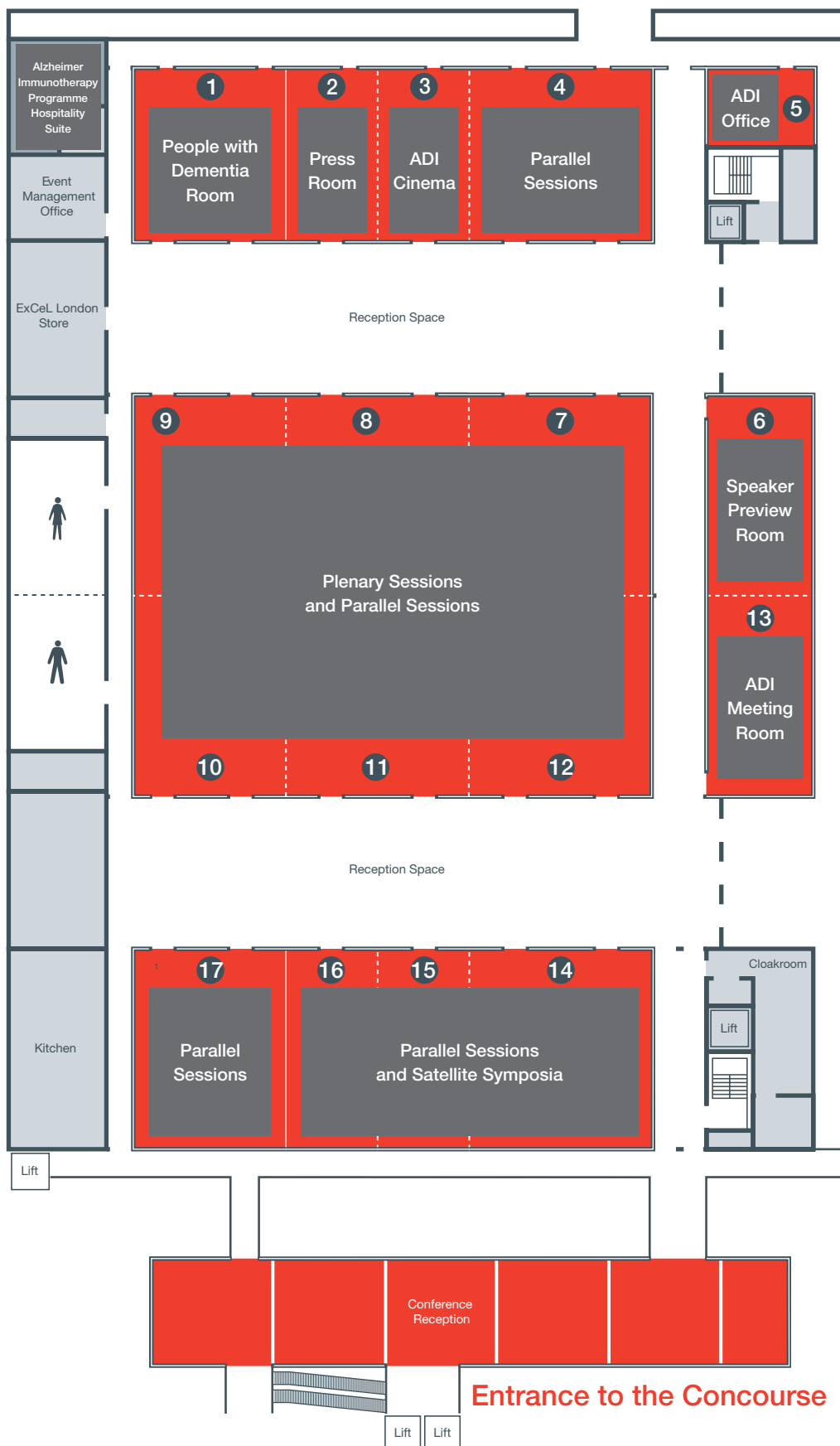
A quiet room for people with dementia and their accompanying person will be available for people with dementia to meet and relax in peace. The room will be open at the times below and will serve teas and coffees throughout the day, with light refreshments at coffee breaks.

Wednesday 7 March 2012	12:00 – 20:30
Thursday 8 March 2012	08:30 – 18:00
Friday 9 March 2012	08:30 – 18:00
Saturday 10 March 2012	08:30 – 14:00

Plan of the ExCeL Complex



Plan of the ICC Capital Suite





General Information

Registration Desk

The registration desk will be located in the Capital Hall, Level 0, and will be open at the following times:

Wednesday 7 March 2012	10:00 – 20:30
Thursday 8 March 2012	07:30 – 18:00
Friday 9 March 2012	07:30 – 18:00
Saturday 10 March 2012	08:30 – 13:30

In addition to registering for the conference and collecting badges please visit the registration desk for information on your accommodation (if you booked through the registration process) and information on local amenities.

Conference Badges

Once collected, please ensure that you wear your badge at all times during the conference.

Presenting

Speaker Preview Room (Room 6, Capital Suite, Level 3)

Presenters should present their final presentation in the Speaker Preview Room no later than 4 hours prior to their scheduled presentation. The Speaker Preview Room will be staffed with technicians that can assist with any compatibility or formatting issues.

Wednesday 7 March 2012	12:00 – 21:00
Thursday 8 March 2012	08:00 – 18:00
Friday 9 March 2012	08:00 – 18:00
Saturday 10 March 2012	08:30 – 13:30

Abstracts

This year we are not printing a combined programme and abstract book – instead delegates will receive a USB stick, kindly sponsored by Bupa Care Services, containing all abstracts within a fully searchable pdf file. Delegates who are unable to use the USB stick can view abstracts on the abstract viewing terminals which are located within the poster board area within the Capital Hall.

They are also available to download from the ADI conference website at www.adi2012.org

Certificates of Attendance

General certificates of attendance will be available from the registration desk from Thursday 8 March.

Cloakroom

The cloakroom is situated on Level 0 of the ICC, outside of the Capital Hall and will be open at the following times:

Wednesday 7 March 2012	16:00 – 21:00
Thursday 8 March 2012	07:30 – 18:30
Friday 9 March 2012	07:30 – 18:30
Saturday 10 March 2012	08:30 – 14:00

Please note that it will cost £1.00 per item to use the cloakroom. The cloakroom staff will NOT accept items of value such as laptops and other electronic equipment.

General Information

Continuing Medical Education Accreditation

We are pleased to confirm that the ADI conference has been approved for CME accreditation from the following bodies:

Royal College of Physicians

The ADI conference has been accredited by the Royal College of Physicians and has been awarded 18 credits, broken down into the following days:

Wednesday 7 March 2012	2 Credits
Thursday 8 March 2012	6 Credits
Friday 9 March 2012	6 Credits
Saturday 10 March 2012	4 Credits

Royal College of Psychiatrists

We are pleased to confirm that the conference has been accredited by the Royal College of Psychiatrists – up to 6 points are available for each day.

Royal College of Nursing

We are pleased to confirm that the ADI conference has been accredited by the Royal College of Nursing Accreditation Unit and has been awarded 21 study hours as follows:

Wednesday 7 March 2012	3 Study Hours
Thursday 8 March 2012	7 Study Hours
Friday 9 March 2012	7 Study Hours
Saturday 10 March 2012	4 Study Hours

Delegates wishing to be credited with Royal College of Nursing or Royal College of Physicians points will need to fill in the on line evaluation either on site or after the event. After this, certificates of attendance will be issued.

Council Meeting

The ADI Council meeting will take place between 13:00 – 17:00 on Wednesday 7 March in Room 14,15 & 16, Capital Suite, Level 3.

Delegate List

A provisional delegate list will be available for delegates to view from the registration desk.

Emergencies

If you need to contact the organisers outside of the registration desk opening hours please call +44 (0)7841 102 491.

Language

The official language of the conference is English. No simultaneous translation will be provided.

Message Board

A message board will be available next to the registration area on which organisers and delegates can leave updates or messages. Please do not post advertising, as it will be removed.

Press Office

The press office will be located in Room 2, Capital Suite and will be open at the following times:

Wednesday 7 March 2012	15:00 – 19:00
Thursday 8 March 2012	09:00 – 17:30
Friday 9 March 2012	09:00 – 17:30
Saturday 10 March 2012	09:00 – 13:00

Contact details:

Press Office at ExCeL: 0207 069 6015

Alzheimer's Society press office: 0207 423 3595

Out of hours press enquiries: 07802 688 774



General Information

The London Pass – discounted rates for London Attractions

Please note that we are not providing organised tours of London for delegates – however, delegates are able to purchase The London Pass from the accommodation / local information desk in the registration area.

The London Pass offers entry to 55+ of London's top attractions without further payment, with top sites including the Tower of London, Westminster Abbey, St Paul's Cathedral, Thames River Cruises and London Zoo. Passes can be purchased from the accommodation / local information desk and cost:

Adult 1 Day	£39.00
Adult 2 Day	£54.00
Adult 3 Day	£65.00

4th Alzheimer's Awards for evidence-based psychosocial interventions for people with dementia and their carers

ADI and Fondation Médéric Alzheimer are pleased to confirm that the 4th Alzheimer's Awards for evidence-based psychosocial interventions for people with dementia and their carers will be presented at the ADI conference.

Two awards will be presented: the first for the best evidence-based psychosocial intervention with a prize of €18,000 and the second for the most promising evidence-based psychosocial intervention, which will be awarded €7,000. These awards will be announced and presented during the conference dinner on Friday 09 March 2012.

ADI Cinema

TV and film are important mediums for raising awareness of dementia. In this room we will be screening short films and excerpts of documentaries from around the world addressing the subject of dementia.

The ADI Cinema will be located in Room 3, Capital Suite and will be open at the following times:

Wednesday 7 March 2012	12:00 – 18:00
Thursday 8 March 2012	09:00 – 18:00
Friday 9 March 2012	09:00 – 18:00
Saturday 10 March 2012	09:00 – 14:00

Films will be shown on a continuous loop throughout the day. Further information on the films being shown will be given in the room.

The current line-up is as follows:

Through our Eyes, a life with dementia – Scottish Dementia Working Group
Going Home – Alzheimer Association Singapore
Memories in the Mist – Hungarian Alzheimer Society
I Remember Better When I Paint (Introduction) – Berna Huebner and Eric Ellena
A Journey with Grandpa – Alzheimer Association Singapore
Glyndebourne Lewes Villages Project
Memories – Alzheimer's and Related Disorders Association of Thailand
The 7 Summits Climb for Alzheimer's – Alan Arnette
10 Glorious Seconds – Bupa
I Can I Will – Richard Taylor
Always – Alzheimer's and Related Disorders Association of Thailand

Evaluation

From Friday 9 March, the self-registration terminals located by the registration desk area will be available for delegates to provide feedback via an on-line survey. To help us improve our services we would be most grateful if you could complete the survey either on Friday 9 or Saturday 10 March.

One person will be selected at random to win a free registration to ADI 2013 in Taipei.



INTERNATIONAL CONFERENCE
Alzheimer's Disease International

28th International Conference
of Alzheimer's Disease International
Dementia: Action for Global Change

18-20 April 2013 Taipei

We invite you to create connections, share experiences, gather knowledge and make a difference to the lives of those affected by dementia.



WEBSITE NOW OPEN - www.adi2013.org

Register your interest to receive regular conference updates



**Alzheimer's Disease
International**





Exhibition (Capital Hall, Level 0)

Exhibition Plan

A full exhibition plan is available on page 18.

Exhibition Area Schedule

The exhibition hall will be open at the following times:

Wednesday 7 March 2012	17:00 – 20:30
Thursday 8 March 2012	09:30 – 18:00
Friday 9 March 2012	09:30 – 18:00
Saturday 10 March 2012	09:30 – 13:30

Internet Café

The internet café will be located at the back of the exhibition area for delegates to access the internet. There will be 8 terminals which will be available during exhibition opening hours.

Prize for best ADI member showcase stand

This international showcase provides ADI members with the opportunity to highlight the work they do supporting people with dementia and their families.

We invite you to vote on the best stand, taking into consideration the overall presentation and quality of information provided. A prize will be awarded to the winning member association at the conference dinner.

Garden of Memory

A sensory “Garden of Memory” has been created in the centre of the exhibition area for the benefit of delegates. Gardening and garden related activities for pleasure and well-being have therapeutic benefits for people with dementia. Not only can people enjoy being in a relaxing environment, but they can also be a part of creating and maintaining this outdoor space. Thus providing people with the opportunity to continue activities they may have enjoyed in the past or discover new interests. With this in mind a team of experienced gardeners and horticultural therapists have created a harmonious, tranquil space with details that awaken the senses. This is a concept that can be replicated on different scales and in different countries around the world to benefit people with dementia and their families.

This garden has been kindly sponsored by Meeting Needs, the charity for the Meetings and Events Industry www.meetingneeds.org.uk. We are very grateful to Meeting Needs for their support to those with dementia who are attending this conference. Their sponsorship includes the transportation of the garden after the event to the Hamara Ghar roof garden above Queens Market by Green Street in Newham. This will enable the elderly residents in sheltered housing to spend time relaxing, reflecting and actively gardening.

Exhibition Plan

Entrance

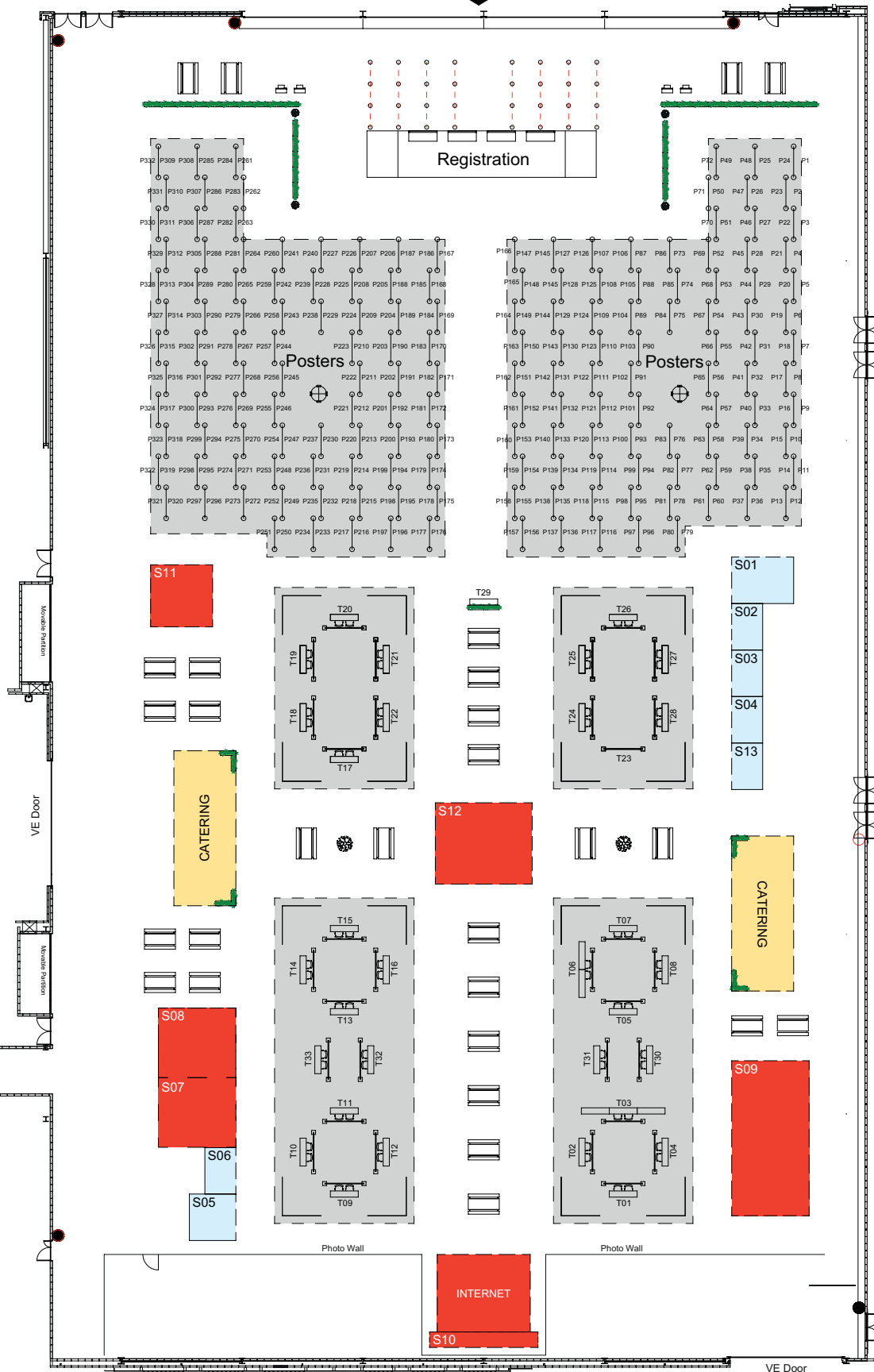




Table Top Stands

T1	Alzheimer's and Related Disorders Association of Thailand
T2	Alzheimer's Australia
T3	Puzzle with Me
T4	Alzheimer Society of Bangladesh
T5	Alzheimer Society of Canada
T6	Health Professions Press
T7	Deutsche Alzheimer Gesellschaft
T8	Alzheimer Disease Societies of Croatia
T9	Journal of Dementia Care
T10	Project Lifesaver
T11	Greek Association of AD and Related Disorders
T12	Hong Kong Alzheimer's Disease Association
T13	IAHSA
T14	The European Reminiscence Network
T15	Alzheimers & Related Disorders Society of India (ARDSI)
T16	Iran Alzheimer Association
T17	Alzheimer's Society of Japan
T18	Alzheimer Association Mauritius
T19	Alzheimers New Zealand
T20	Alzheimer's Pakistan
T21	Romanian Alzheimer Society
T22	Alzheimer Scotland - Action on Dementia
T23	Association Alzheimer Suisse
T24	REPoD
T25	King's College London, Institute of Psychiatry
T26	I Can I Will
T27	Alzheimer's Association of Trinidad and Tobago
T28	Dementia UK
T29	Display Table
T30	PAHO Research Promotion
T31	Asociacion de Alzheimer de Puerto Rico
T32	Jenry Ltd
T33	Federación Mexicana de Alzheimer

Shell Scheme Stands

S01	Alzheimer's Society
S02	Alzheimer's Disease International
S03	TADA, Chinese Taipei
S04	Home Instead Senior Care
S05	Canadian Dementia Knowledge Translation Network
S06	Dementia Services Development Centre
S07	Watchie
S08	ADI 2012 TV
S09	Jiminy Wicket
S10	Wisepress
S11	Bupa Care Services
S12	Garden of Memory
S13	EU Joint Programme in Neurodegenerative Disease Research (JPND)

Poster Presentations (Capital Hall, Level 0)

All posters will be displayed during the entire conference.

The Posters will be available to view whilst the Capital Hall is open – please see the exhibition opening times on page 17 for information.

Abstract viewing stations

Abstract viewing stations will be available within the poster area for delegates to view the original abstracts associated with the posters and parallel sessions.

Poster viewing times

Depending on the abstract number, presenters have been asked to stand by their posters between 12:45 and 13:45 either on Thursday 8 March or Friday 9 March. Please see page 21 for a guideline on when presenters will be standing by their boards.

ADI 2012 TV is here!

After their success at last year's conference in Toronto, WebsEdge is coming to the ADI 2012 conference in London to once again produce ADI TV – an informative and exciting TV programme.

ADI TV raises the visibility of the hard work of organisations in our field. It provides an opportunity to learn about research initiatives, best practice in dementia care and programmes to improve the quality of life of carers and people living with dementia.

ADI 2012 TV will be a daily TV show which has two features: "Thought Leadership" and "Conference News". Thought Leadership is five-minute film segments highlighting best practice in the field and featuring informative case studies. Conference News includes daily "behind the scenes" interviews, coverage of conference events, and reactions to the day from attending delegates.

The TV show will be shown throughout ExCeL, in delegate hotel rooms on a dedicated channel and online. The Thought Leadership feature will showcase Alzheimer's disease related work from around the world. These segments have been filmed in advance enabling WebsEdge film crews to go "on location".

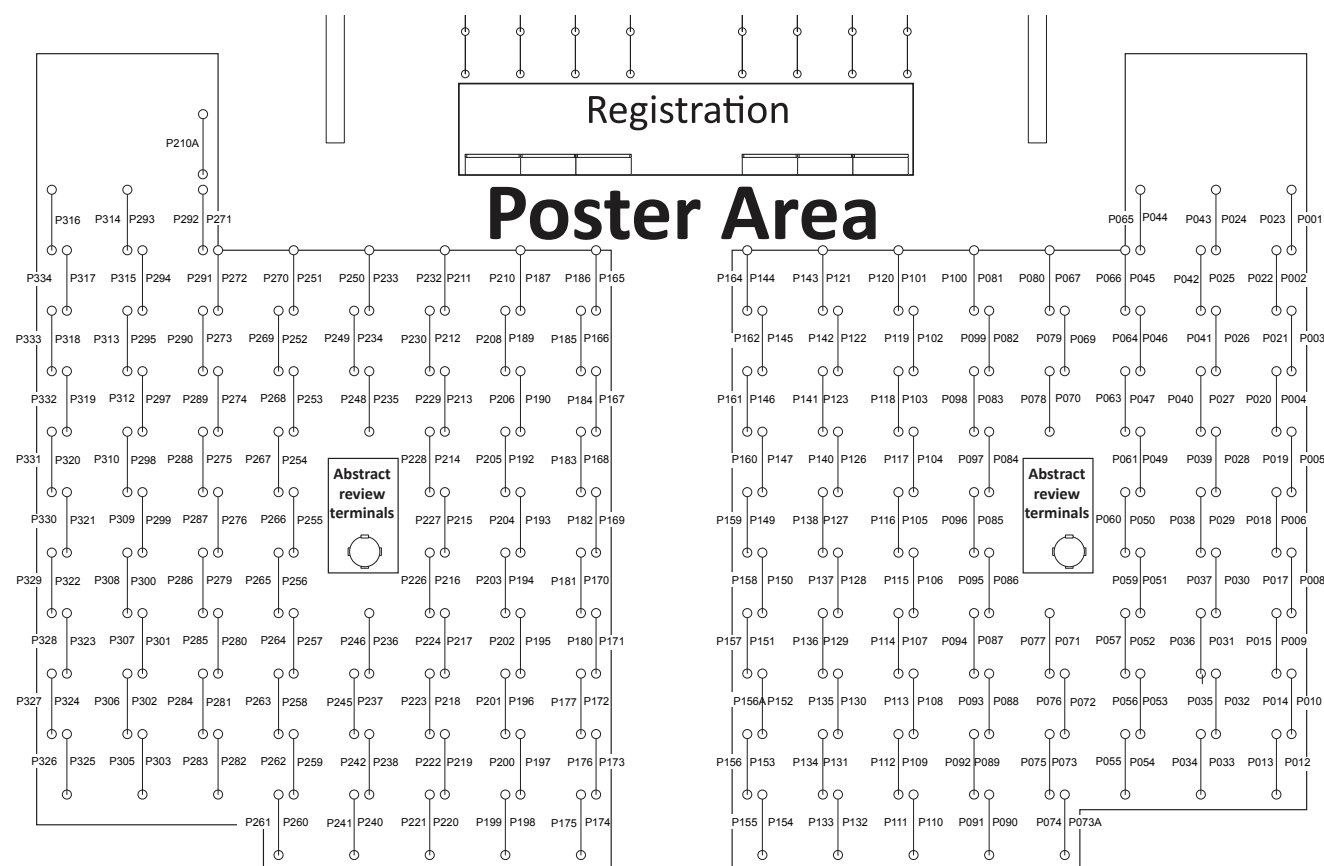
Stay tuned for films from:

- Ana Aslan International Foundation
- Cure Alzheimer's Fund
- McGill University

Visit the WebsEdge team on the ADI 2012 TV Stand in the exhibition. Let them know what you think of the programming, and what you would like to watch in future shows.



Poster Presentation Plan



Poster Presentations

Presenters standing by their board on
Thursday 08 March, 12:45 – 13:45

Topic	Poster Numbers
Molecular Research	P001 – P015
New and Future Treatments	P017 – P044
Diagnosis	P045 – P073A
Imaging of Dementia	P106 – P109
Technology	P110 – P112
Quality of Life and Rights of People with Dementia	P221 – P245
Care Co-ordination: Case Management	P255 – P268
Person Centred Care	P269 – P297
Stigma	P309 – P313
Advocacy	P320 – P322
New Guidelines and Concepts in Alzheimer's Disease	P323 – P325
Other	P326 – P334

Presenters standing by their board on
Friday 09 March 12:45 – 13:45

Topic	Poster Numbers
Patient and Public Involvement in Dementia Research	P074 – P096
Other Dementias	P097 – P105
Non Pharmacological Interventions	P113 – P156A
Knowledge Translation	P157 – P161
Support and Training for Informal and Professional Carers	P162 – P210A
Leisure and Meaningful Experiences in Dementia	P211 – P220
Dementia Friendly Communities	P246 – P254
Risk Factors and Prevention	P298 – P308
Art and Dementia	P314
Media and Dementia	P315 – P319

Local Information

ExCeL London is located in the East End of London, approximately 30 minutes from the "West End" of London. For information on travelling within London please visit the Transport for London website – www.tfl.gov.uk

Language

English is the official language spoken in the United Kingdom.

Currency, Credit Card and Exchange

The currency of the UK is the British pound (£).

You will find cash machines/ATMs in most banks, hotels, and shopping centres. Travellers cheques are widely accepted, to avoid additional exchange rate charges, travellers are advised to take travellers cheques in pounds sterling. Currency exchange is available at banks and bureaux across London and at the airports.

Local information in London

For further information on things to do whilst visiting London please go to Visit London at www.visitlondon.com/attractions. The website offers you a wide variety of things to do whilst in London.

Restaurants

With more than 40 cafés, bars and restaurants, there's plenty of choice when it comes to refreshment at ExCeL London.

For further details on onsite and offsite bars and restaurants near ExCeL please visit the ExCeL London website at www.excel-london.co.uk/visitors/foodanddrink

Smoking

Smoking is prohibited in all public buildings, including ExCeL London. Most hotels will have designated smoking rooms, and restaurants will have designated smoking areas outside.

Taxes

Value-added tax (VAT) is a 20% sales tax levied on most goods and services sold in the UK. Restaurants must, by law include VAT in their menu prices.

Taxis

There are plenty of taxi services in London, the most common is the "Black cab". Licensed black-cab drivers have 'the knowledge' – i.e. they undergo rigorous training and exams, and they know every central London street. Cabs can be hailed in the street and are available to hire when the yellow light above the windscreen is lit. Fares are metered with a minimum charge of £2.20 and are more expensive in the evenings and at night.

Tips are not expected, however you can tip them up to 10% but most people round the fare up to the nearest pound.

The Black London Taxicab

- www.londonblackcabs.co.uk

Zingo Taxi – 0870 070 0700

Ladycabs – 020 7272 3300

(Women traveling alone can choose this company which has women drivers)

Telephones

The international dialling code for the UK is +44. The code for London is 020, followed by two sets of four digits.



Social Events and Other Activities

Opening Ceremony and Welcome Reception

The Opening Ceremony and Welcome Reception will take place on Wednesday 7 March; the Opening Ceremony will take place in Rooms 7-12, Capital Suite between 18:00 – 19:00, immediately followed by the Welcome Reception which will take place in the Capital Hall until 20:30. Light refreshments will be served at the Welcome Reception.

Members Reception (invitation only)

The ADI Members Reception will take place at Mansion House between 18:30 – 20:30 on Thursday 8 March. Guests must bring their invitation with them. The address is Mansion House, Walbrook, London, EC4N 8BH.

Mansion House is not within walking distance of ExCeL London - coaches will be provided to transport delegates to the reception. Coaches will depart from the East Entrance to ExCeL at 18:00, 18:15 and 18:30. Return coaches will transport delegates back at 20:15, 20:30 and 20:45.

Conference Dinner

The Conference Dinner will take place at the Painted Hall, Royal Naval College, Greenwich on Friday 9 March between 19:00 and 0:00. Tickets cost £65.00 inc VAT and can be purchased at the registration desk. Tickets include transportation to and from the venue, welcome reception, dinner and entertainment. Coaches will depart from the East Entrance to ExCeL between 18:00 – 19:00. Return coaches will depart from the Royal College between 22:00 – 00:00.

Alzheimer's Society Memory Walk – in partnership with Bupa

Thank you to all those who registered to take part in the Memory Walk around the “Famous Square Mile” of London. Below is a reminder of the schedule for those who have received confirmation of their place.

Saturday 10 March

13:15	Meeting point Please gather promptly outside the Capital Hall (level 0), near the main entrance.
13:30 – 14:00	Transport and lunch A coach is provided to take you to the head office of Alzheimer's Society, where the walk begins. A packed lunch will be provided on the coach.
14:00 – 16:00	The “Famous Square Mile” Memory Walk Beginning at the Tower of London, the walking tour will last approximately two hours, including stopping at points of interest.
16:00	After the Memory Walk The walking tour will finish at approximately 4pm near to Bank Tube Station. From here, you will be welcome to explore more of the sights or make your own way back to your hotel.

If you have any questions, visit our Frequently Asked Questions page at www.bupa.co.uk/adimemorywalk or contact Rachel or Laura if you have any further queries.

Before the day

T: 0113 380 1644

M: 07740 349213

Email: adimemorywalk@bupa.com

On the day

M: 07740 349213

Keynote Speakers



Paul Aisen

Paul Aisen, M.D., Professor of Neurosciences at the University of California, San Diego, has conducted therapeutic research on Alzheimer's disease for the past two decades. He is Director of the Alzheimer's Disease Cooperative Study, a consortium

funded by the National Institute on Aging to develop assessment instruments and conduct clinical trials.



Paul Burstow

Paul was elected as Member of Parliament for Sutton & Cheam at the 1997 election and has held several front bench positions, including Shadow Spokesman for Health, Shadow Minister for London and most recently Shadow Chief Whip.

Before being elected to Parliament Paul headed the Liberal Democrat's Local Government Unit and served on Sutton Council for 16 years from 1986. Paul was educated at Glastonbury High School for Boys, Sutton, and Carshalton College, before attending South Bank Polytechnic, where he gained a business studies degree. Upon graduating, he worked as a buying assistant before becoming a research assistant at the London Borough of Hounslow.



Carol Brayne

Carol Brayne is a Professor of Public Health Medicine and Director of the Institute of Public Health at Cambridge University. She is a medically qualified epidemiologist and public health academic. Her main research area is longitudinal studies of

older people following changes over time in cognition, dementia natural history and associated features with a public health perspective. She is lead PI in a group of the MRC CFA Study – which have informed and will continue to inform national policy and scientific understanding of dementia in whole populations.



Bruno Dubois

Bruno Dubois is currently Professor of Neurology at the Neurological Institute of the University Salpêtrière Hospital in Paris, University Pierre & Marie Curie Paris (UPMC). He is Director of the "Institute for Memory and Alzheimer Disease"

(IM2A) and of the Research INSERM Unit on "Cognition and Neuroimaging in Brain Diseases" at the ICM (Institut du Cerveau et de la Moelle Epinière) at the Salpêtrière Hospital. He is President of the Scientific Committee of France-Alzheimer and of IFRAD (International Fund Raising for Alzheimer's disease), consultant for the Human Frontier Program and expert of the French Agency of Drugs. He is a member of the European Alzheimer Disease Consortium (Therapeutics and Intervention Studies). He has published on anatomical and biochemical studies on the central cholinergic systems in rodents and humans; on cognitive neuropharmacology; and on neuropsychology in patients with dementia, with special reference to memory and executive functions. He has recently chaired the International Working Group on the "New Criteria for Alzheimer's disease" and a task force on the "New Criteria for Parkinson's disease dementia". He is principal or co-investigator of a number of research programmes focusing on AD, MCI and dementia in Parkinson's disease.



Suzanne Fitzsimmons

Suzanne Fitzsimmons is the CEO of Sunset Hills Aging and Wellness, Inc. and is both a geriatric nurse practitioner and a recreational therapist. Unique in her background and abilities she brings experience as a dementia unit nurse manager,

a researcher, and hands on intervention specialist. Sue is the co-author of the Dementia Practice Guidelines, several other books and over 100 articles pertaining to the care of older adults. She is on the editorial boards of the American Journal of Recreational Therapy and Activities Directors Quarterly and is as the section editor of Dementia Care for the Journal of Gerontological Nursing. She works for The University of North Carolina at Greensboro as a research associate on a Geriatric Workforce Education Grant and as an adjunct instructor for the Departments of Recreation and Gerontology. She was recently awarded a NIH small business grant to study the feasibility of an online educational course for persons with mild cognitive impairment.

She would like to add that all this would not have been possible without the mentorship of her research partner, Dr Linda Buettner.



Keynote Speakers



Patricio Fuentes

Dr. Fuentes is a Neurologist and Associate Professor at Cognitive Neurology and Dementia Unit, Hospital del Salvador and Geriatrics Section of the Clinical Hospital of University of Chile, in Santiago. Scientific Advisor of

Chilean Alzheimer's Association and member of Dementia Workgroup Chilean Neurological Society. His clinical interests are focused on mild cognitive impairment and drug therapy of AD.



Ryuta Kawashima

Dr. Ryuta Kawashima is a Professor of the Tohoku University since 2011. His scientific interest is in functional brain mapping. He also has been paying attention to return

benefits of basic sciences to public, and has proposed systems for improvement of the prefrontal functions of humans.



Katherine Jarman

Katherine is senior producer in the specialist Health section of BBC News, working with six Health and Medical correspondents based at BBC Television Centre. The team supplies material to all

BBC News TV and Radio programmes, from the Today programme on Radio 4 first thing in the morning to the Ten O'Clock News last thing at night. Katherine's also worked as a producer on a variety of individual programmes, including the Ten O'Clock News and Breakfast News

Katherine was also responsible for planning and producing an entire day's coverage on dementia across the whole of BBC News (Radio, TV and Online) two years ago - as part of the coverage, the BBC convened a panel of experts to review the available evidence on the influence of 'lifestyle' factors on the risk of dementia, and produce a report on their findings.

Before joining the BBC in 1997, she worked as a researcher to Labour MPs in Opposition, including Harriet Harman, Mo Mowlam and Chris Smith, covering portfolios ranging from Health to Social Security to Culture. She started her working life in public relations.



Miia Kivipelto

Miia Kivipelto, MD, PhD is Professor in Clinical Geriatric Epidemiology at Karolinska Institute Alzheimer Disease Research Center (KI-ADRC) and Deputy Head of KI Aging Research Center in

Stockholm, Sweden. She is also Research Director of Neuroepidemiology unit at University of Eastern Finland. She is combining research with clinical medicine working also as senior geriatrician at the Memory Clinic, Karolinska University Hospital. She has been working in several clinical trials concerning AD and is now Deputy Head of the Clinical Trials Unit. Dr. Kivipelto is the principal investigator in the large populations based 'Cardiovascular Risk Factors, Aging and Dementia (CAIDE) study' and in 'Finnish Geriatric Intervention Study to Prevent Cognitive Impairment and Disability (FINGER)'. Dr. Kivipelto has several PhD and post doc students in her research group and she is involved in many international networks and scientific/steering committees. She got the Association of European Psychiatrists Prevention Award in Psychiatry 2007 for her work concerning modifiable risk factors for AD, Academy of Finland award for Social Impact 2009, and Junior Chamber International prize 2011.

Keynote Speakers



Martin Orrell

Professor Martin Orrell, FRCPsych PhD, Professor of Ageing and Mental Health at University College London. At North East London Foundation Trust, Prof Orrell works as an Honorary Consultant Old Age

Psychiatrist and is Director of Research & Development. He is also Visiting Professor at City University. He is Chair of the Memory Services National Accreditation Panel (MSNAP). He leads the SHIELD research programme on psychosocial interventions for dementia care. He has published over 150 academic papers and is Editor of the journal *Ageing and Mental Health*.

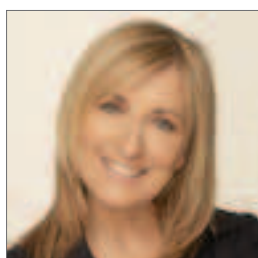


Sir Terry Pratchett

Sir Terry Pratchett is the acclaimed author of the global bestselling *Discworld* series with over 75 million sales worldwide.

His novels have been widely adapted for stage and screen, and he is the winner of multiple prizes, including the Carnegie Medal, as well as being awarded a knighthood for services to literature.

Sir Terry was diagnosed with posterior cortical atrophy, a rare form of dementia, in 2007.



Fiona Phillips

Campaigner, journalist, *Mirror* columnist and broadcaster, Fiona Phillips is an active Alzheimer's Society ambassador and has spoken out at numerous events on the key issues affecting people with dementia and their carers.

Fiona speaks from first hand experience as her mother had Alzheimer's until her death in May 2006 and her father, who was diagnosed with the disease shortly afterwards, died in February 2012.

In January 2009, Fiona presented *Mum, Dad, Alzheimer's and Me*, an incredibly moving Channel 4 *Dispatches* TV documentary where Fiona talked candidly about her struggles caring for both her parents during their respective illnesses and investigating the difficulties faced by people with Alzheimer's and their families to get adequate care and support. Fiona has written a book, *Before I Forget*, about her relationship with her parents and their dementia.



Martin Prince

Professor Martin Prince heads the Centre for Public Mental Health at the Institute of Psychiatry, which addresses mental disorders in the community, patterns of help-seeking, and health system

responses. The Centre has a strong international focus and brings the highest quality epidemiological methods and a public health perspective to bear on improving care for people with mental disorder. A combination of epidemiological and health service research methods are used to identify opportunities for primary and secondary prevention, from population through to primary care.



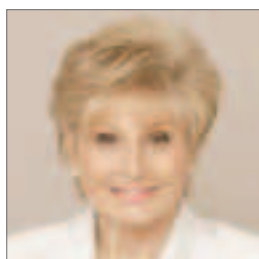
Glenn Rees

Glenn Rees has worked at senior levels in the British and Australian Public Services. In Britain he worked as Private Secretary to senior Ministers, in the Cabinet Office and in Economic Departments. In

Australia since 1976 he has worked in program and policy areas including Prime Minister and Cabinet, Employment and Training, Aged Care, Disabilities, Housing and the Aboriginal and Torres Strait Islander Commission. He was Chair of the Nursing Homes and Hostels Review in 1986 and was involved in implementing the first wave of aged care reforms. He has been Chief Executive Officer of Alzheimer's Australia for 10 years during which time Dementia has been made a National Health Priority.



Keynote Speakers

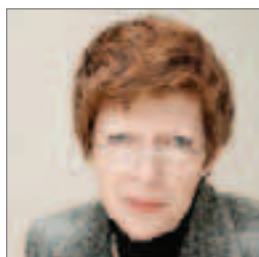


Angela Rippon

Broadcaster, journalist and presenter, Angela Rippon is an ambassador for Alzheimer's Society. A BBC newsreader for five years, Angela has worked in news and current affairs for over 40 years. She has been awarded

the OBE for her services to broadcasting, charity and the arts.

Angela regularly speaks out about her experiences of caring for her mother, Edna who was diagnosed with dementia in 2004 and sadly died in 2009, in order to raise awareness and funds for others affected by the condition.



Helga Rohra

Helga was born 19th April 1953 in Romania and emigrated to Germany in 1972. A university graduate in languages and a translator in five languages. Helga was diagnosed with Lewy Body Dementia in 2008. She

is active at National and International Conferences with speeches about Dementia and the fight for the rights of those affected.



Louise Sutton

As Assistant Producer on Coronation Street, the UK's longest running and favourite soap, Louise currently manages the award winning team of writers and runs the editorial department. Coronation Street's

producers, writers and cast worked closely with Alzheimer's Society in tackling its recent dementia storyline.

During her time on Coronation Street, the show has been nominated for 2 BAFTAs and has won numerous awards including the National Television Award for Best Continuing Drama and the prestigious Writer's Guild Award for Best Drama Series.

With over 300 hours of primetime television drama to her credit, Louise's work also includes Brookside, Hollyoaks, Emmerdale and Grange Hill. Louise was involved in the developing, scripting and production of H2O – Just Add Water Series 1 & 2 and Pirate Islands: The Lost Treasure of Fiji on which she was also the additional dialogue writer for the movie cut-down.

Louise has successfully developed ideas, pitches and treatments for a wide range of international broadcasters including ITV, BBC, Disney, ZDFE, Network Ten, ABC (AUS), Channel 9, Nickelodeon and Discovery.



Ray Winstone

Ray Winstone's most memorable film credits include 'Scum', 'Quadrophenia', 'Sexy Beast' and 'Nil By Mouth' for which he won a British Independent Film Award for Best Actor and was BAFTA nominated. He

has worked with some of the most prestigious directors including Anthony Minghella ('Cold Mountain' and 'Breaking & Entering'), Martin Scorsese ('The Departed' and 'Hugo'), Robert Zemeckis ('Beowulf') and Steven Spielberg ('Indiana Jones & The Kingdom of The Crystal Skull'). Television credits include award winning 'Henry VIII' and 'Vincent' (Granada/ITV) for which he won an International Emmy Award for Best Actor. Recent credits include the BBC three-part drama 'Great Expectations' playing Magwitch, 'Snow White and the Huntsman' opposite Charlize Theron and 'The Sweeney' playing Regan. Ray also filmed 'Elfie Hopkins' for his production company Size 9 Productions, due for release later this year.

In 2007 Ray received the Richard Harris Award for outstanding contribution at the British Independent Film Awards.

Please visit **our** **breakfast symposium**

Introducing a new approach in
Alzheimer's disease

- 7.45 - 08.45 Thursday
- Breakfast will be served
- Chair will provide Patient Association perspective on the scientific presentations



Scientific Programme

This year, as part of the theme for the conference, sessions have been categorised into themes. To aid navigation of the scientific programme each category has been given a colour and symbol (shown to the right), which will appear throughout the book.

Key to Icons and Colours for Sessions

Plenary Sessions



Keynote lectures on the latest advances in research and care.

Scientific Parallel Sessions



Sessions on the latest developments in dementia research.

Care Parallel Sessions



Sessions on the latest in best practice in care.

Dispelling Fiction Parallel Sessions



Sessions addressing a wide range of topics designed to challenge some of the myths of dementia and demonstrate innovative ways to improve the quality of life of people living with dementia and their families.

Living with Dementia Parallel Sessions



“NEW” sessions devised and led by people living with dementia and open to all delegates. These sessions will be chaired and delivered by people with dementia addressing topics identified by an international committee of people living with dementia.

ADI Workshops



Capacity building sessions aimed at Alzheimer associations but open to all delegates.

Satellite Symposia



In addition to the scientific programme, satellite symposia will take place during breakfast, lunch and evening hours.

Programme at a Glance

Wednesday 7 March					Thursday 8 March				
07:30									
07:45									
08:00									
08:15									
08:30									
08:45									
09:00									
09:15									
09:30									
09:45									
10:00									
10:15									
10:30									
10:45									
11:00									
11:15									
11:30									
11:45									
12:00									
12:15									
12:30									
12:45									
13:00									
13:15									
13:30									
13:45									
14:00									
14:15									
14:30									
14:45									
15:00									
15:15									
15:30									
15:45									
16:00									
16:15									
16:30									
16:45									
17:00									
17:15									
17:30									
17:45									
18:00									
18:15									
18:30									
18:45									
19:00									
19:15									
19:30									
19:45									
20:00									
20:15									
20:30									
20:45									




Friday 9 March			
Registration Open	Satellite Sympiosum Government Alzheimer Plans Room 14, 15 & 16, Capital Suite		
	Plenary Session Portrayal of Dementia in the Mass Media (Debate) Room 7 - 12, Capital Suite		
	Tea, Coffee, Exhibition & Posters Capital Hall, ICC		
	Plenary Session Non-Pharmacological Interventions Room 7 - 12, Capital Suite		
	Lunch, Exhibition & Posters Capital Hall, ICC	Satellite Symposium Results of the NCD Summit Room 14, 15 & 16, Capital Suite	
	Parallel 13 Patient and Public Involvement Room 4, Capital Suite	Parallel 14 Dementia Friendly Communities Room 7 & 12, Capital Suite	Parallel 15 Living with Dementia: Technology Room 8 & 11, Capital Suite
	Parallel 16 Training & Support of Carers I Room 14, 15 & 16, Capital Suite	Parallel 17 Leisure & Meaningful experiences Room 9 & 10, Capital Suite	Parallel 18 ADI Workshop: Global Campaign Room 17, Capital Suite
	Tea, Coffee, Exhibition & Posters Capital Hall, ICC		
	Parallel 19 Other Dementias Room 4, Capital Suite	Parallel 20 Knowledge Translation Room 7 & 12, Capital Suite	Parallel 21 Living with Dementia: End of Life Issues Room 8 & 11, Capital Suite
	Parallel 22 Non Pharmacological Interventions Room 9 & 10, Capital Suite	Parallel 23 Person Centred Care II Room 14, 15 & 16, Capital Suite	Parallel 24 ADI Workshop: Working with Volunteers Room 17, Capital Suite
	Satellite Symposium WATCHIE "Advanced Personal Locator" Room 14, 15 & 16, Capital Suite		
	Conference Dinner Painted Hall, Greenwich 19:00 - 00:00		

Saturday 10 March			
Registration Open	Parallel 25 Policy Issues Room 4, Capital Suite		
	Parallel 26 Prevention & Risk Reduction Room 7 & 12, Capital Suite		
	Parallel 27 Living with Dementia: This is Me Room 8 & 11, Capital Suite		
	Parallel 28 Image of Dementia Through the Arts Room 9 & 10, Capital Suite		
	Parallel 29 Training & Support of Carers II Room 14, 15 & 16, Capital Suite		
	Parallel 30 ADI Workshop: The Research Agenda Room 17, Capital Suite		
	Tea, Coffee, Exhibition & Posters Capital Hall, ICC		
	Plenary Session Prevention and Risk Reduction (Debate) Room 7 - 12, Capital Suite		
	Closing Ceremony Room 7-12, Capital Suite		
Exhibition Open			

07:30
07:45
08:00
08:15
08:30
08:45
09:00
09:15
09:30
09:45
10:00
10:15
10:30
10:45
11:00
11:15
11:30
11:45
12:00
12:15
12:30
12:45
13:00
13:15
13:30
13:45
14:00
14:15
14:30
14:45
15:00
15:15
15:30
15:45
16:00
16:15
16:30
16:45
17:00
17:15
17:30
17:45
18:00
18:15
18:30
18:45
19:00
19:15
19:30
19:45
20:00
20:15
20:30
20:45

Full Scientific Programme

Wednesday 7 March

	10:00 – 20:30	Registration Open (Capital Hall, ICC)		
	13:00 – 17:00	ADI Council Meeting Room 14, 15 & 16, Capital Suite		
	15:00 – 17:00	ADI prevention working group sponsored workshop: The Pre Mild Cognitive Impairment (MCI), Subjective Cognitive Impairment (SCI) Stage of Progressive Cognitive Decline. Room 17, Capital Suite Chairs: Barry Reisberg & Frank Jessen		
	15:00	B. Reisberg and ADI Prevention Workgroup	SS01	ADI prevention workgroup sponsored workshop: the pre mild cognitive impairment (MCI), subjective cognitive impairment (SCI) stage of progressive cognitive decline
	15:10	F. Jessen	SS02	Subjective memory impairment: the pre-MCI stage of AD
	15:35	B. Reisberg	SS03	Subjective cognitive impairment (SCI): the pre-mild cognitive impairment (MCI) stage of eventual Alzheimer's disease: an overview of current knowledge and new data
	16:00	B. Reisberg and ADI Prevention working group	SS04	Interview of an older person for the assessment of subjective cognitive impairment (SCI), mild cognitive impairment (MCI), and dementia: usage of clinical rating instruments: the brief cognitive rating scale (BCRS), and the global deterioration scale
	17:00 – 17:45	Welcome Meeting for People with Dementia Room 1, Capital Suite, ICC		
	18:00 – 19:00	Opening Ceremony Room 7-12, Capital Suite, ICC		
		Speakers include: Sir Terry Pratchett Professor Peter Piot		
	19:00 – 20:30	Welcome Reception Capital Hall, ICC		

Full Scientific Programme

Thursday 8 March

	07:30 – 18:00	Registration Open (Capital Hall, ICC)	
🌀	07:45 – 08:45	Satellite Symposium: Introducing a new approach in AD Rooms 14, 15 & 16, Capital Suite <i>Sponsored by Nutricia</i> Chair: Clive Ballard	
		Clive Ballard	Introduction – setting the scene
		Ian McKeith	Hallmarks of AD, research and therapies so far
		Patrick Kamphuis	Introducing a new concept in AD, targeting synapse loss
		Rafael Blesa	A clinical trials program addressing synapse loss
◻	09:00 – 10:30	Plenary Session Preparing for the Dementia Epidemic Room 7-12, Capital Suite Chair: Sube Banerjee	
		Glenn Rees	PL01 Alzheimer's Associations as Agents of Change
		Paul Burstow	PL02 Preparing for the Dementia Epidemic: a Government Response
		Martin Prince	PL03 Global Research for Global Action
	10:30 – 11:00	Tea, Coffee, Exhibition and Posters Capital Hall	
◻	11:00 – 12:30	Plenary Session New Diagnostics / New Lexicon of Alzheimer's Disease Room 7-12, Capital Suite Chair: Alistair Burns	
		Paul Aisen	PL04 Diagnosis of Early Alzheimer's Disease: Implications for Drug Development
		Bruno Dubois	PL05 Diagnosing Early Alzheimer's Disease: the IWG Criteria
		Patricio Fuentes	PL06 Is Early Diagnosis of Alzheimer's Disease Possible Without Biomarkers?
	12:30 – 14:00	Lunch, Exhibition and Posters Capital Hall "Singing for the Brain" Workshop Abu Dhabi Lounge, Level 2, Capital Suite	
🌀	12:45 – 13:45	Satellite Symposium: Demystifying the Clinical Trial Experience: Perspectives from the Patient, Caregiver and Healthcare Provider Rooms 14, 15 & 16, Capital Suite <i>Sponsored by Pfizer</i> Chair: Karen Bell, MD Columbia University Medical Center New York, New York, USA	
		The session will contain inspirational testimony from Alzheimer's clinical researchers with perspectives from patients, caregivers and other key stakeholders discussing their clinical trial experience. Faculty: Niels Prins, MD Alzheimer Research Centrum Amsterdam, The Netherlands	



Dispelling Fiction
Parallel Sessions



Living with
Dementia
Parallel Sessions



ADI
Workshops



Satellite
Symposium

Full Scientific Programme

Thursday 8 March

Programme Detail		14:00 – 15:30	Parallel Session 1 New and Future Treatments Room 9 & 10, Capital Suite Chair: Bengt Winblad	
		14:00	P. Link	OC001 Effects of liquorice on beta-amyloid aggregation and toxicity in caenorhabditis elegans
		14:10	S. Abushakra	OC002 Eln005 (scyllo inositol) effects on emergence of neuropsychiatric symptoms (NPS) in mild/moderate Alzheimer's disease: results from a 78 week phase 2 study
		14:20	M. A. Franco Martin INTERDEM http://www.interdem.org/	OC003 Long lasting memories: cognitive and physical training using new technologies in mild cognitive impairment. Usefulness and implementation in the community
		14:30	S. Gandy	OC004 Novel proneurogenic compound that lowers synaptic a 42 generation in vitro shows cognitive benefit and reduced hippocampal levels of insoluble and oligomeric a in vivo in Alzheimer's mouse model
		14:40	D. Allsop	OC005 Peptide inhibitor nanoparticles (pinps) - a surprisingly effective inhibitor of abeta aggregation
		14:50	G. Stokes INTERDEM http://www.interdem.org/	OC006 Targeting specialist challenging behaviour interventions in aged care homes: can severe challenging behaviours be identified?
		15:00 – 15:30	Questions	
		14:00 – 15:30	Parallel Session 2 Molecular Research Room 4, Capital Suite Chair: TBC	
		14:00	M. A. Moss	OC007 Activation of endothelium in Alzheimer's brain involves soluble aggregates of the amyloid-beta protein
		14:10	R. Itzhaki	OC009 Herpes simplex virus type 1 (hsv1) and Alzheimer's disease: the case for antiviral treatment
		14:20	F. Misiti	OC010 Mechanisms responsible for beta-amyloid - dependent reduction of erythrocyte deformability
		14:30	R. Martins	OC011 Physical activity and cognitive stimulation improves cognition and increases plasma BDNF levels in healthy older adults
		14:40	O. Baiyewu on behalf of the Indianapolis-Ibadan Dementia Research Group	OC012 The relationship between homocysteine and incident dementia in elderly African Americans and elderly Nigerians
		14:50 – 15:30	Questions	



Full Scientific Programme

Thursday 8 March

★	14:00 – 15:30	Parallel Session 3 Living with Dementia: Battling for Diagnosis and Treatment Room 8 & 11, Capital Suite Chair: Richard Taylor		
	14:00	Jennifer Bute	LD1	Battling for diagnosis and treatment
	14:15	Carol Cronk	LD2	Battling for diagnosis and early treatment
	14:30	Peter Dunlop	LD2A	Late diagnosis of dementia a scandal?
	14:45	TBC		
	15:00 – 15:30	Discussion		
▲	14:00 – 15:30	Parallel Session 4 Technology Room 7 & 12, Capital Suite Chair: Rose Marie Dröes		
	14:00	K. H. Goh	OC013	An integrated dementia care and resource centre - developing and sharing resources to improve quality of life of people with dementia and carers
	14:10	S. Zwijsen	OC014	Assistive technology as an alternative to physical restraints in nursing homes for people with dementia
	14:20	M. Pino	OC015	Designing software for elderly suffering from cognitive impairments
	14:30	R. Alegria	OC016	Enhancing verbal communication between Alzheimer's disease patients and caregivers: linguistic and social strategies
	14:40	N. Savitch	OC017	Involving people with dementia in the development of an AT guide – an online tool to support decision making around assistive technology
	14:50 – 15:30	Questions		
▲	14:00 – 15:30	Parallel Session 5 Person Centered Care I Room 14, 15 & 16, Capital Suite Chair: David Troxel		
	14:00	S. Dupuis	OC018	"A changing melody is the most important thing we do": learning from regional experiences
	14:10	J. Macneil Vroomen	OC019	Case management of people with dementia and caregivers (the compass study): the design of a multifaceted study comparing Dutch case management models in dementia
	14:20	G. Carey	OC020	First link - accelerating innovation in community-based dementia care

Full Scientific Programme

Thursday 8 March

	14:30	K. Watchman	OC021	Intellectual disability and dementia.communication strategies to enable inclusion in research
	14:40	B. Draper	OC022	The hospital dementia services project: the state-wide effects of person-based and hospital-based factors on outcomes of hospitalisation for people with dementia
	14:50	K. Swaffer	OC023	Person centered care: an insider's view
	15:00 – 15:30	Questions		
+	14:00 – 15:30	Parallel Session 6 ADI Workshop: The Alzheimer Movement: Using Advocacy to Generate Awareness and Change Room 17, Capital Suite Chair: Mike Splaine		
		Featuring: Alan Arnette, Seven Summits Climb for Alzheimer's (Abstract W2) Meera Pattabiraman, Alzheimer's Disease and Related Disorders Society, India Marc Wortmann, Executive Director, ADI Toby Williamson, Mental Health Foundation (Abstract W3) Martin Sewell, Scottish Dementia Working Group (Abstract W4) This workshop will use a lively case study discussion on techniques to use public awareness events to generate support for the dementia cause such as the 7 Summit Climb for Alzheimer's. Specific advocacy campaigns from India and Scotland will be shared, and participants will get a brief on two new awareness opportunities in 2012 - Country Reports and the release on World Health Day of a World Health Organization (WHO) report on dementia.		
	15:30 – 16:00	Tea, Coffee, Exhibition and Posters Capital Hall, ICC		
○	16:00 – 17:30	Parallel Session 7 Diagnosis Room 9 & 10, Capital Suite Chair: Anders Wimo		
	16:00	L.-W. Chu	OC027	Low BMI predicts incident Alzheimer's disease in older adults with amnesic mild cognitive impairment. A 3-year prospective cohort study
	16:10	R. Uwakwe	OC028	Screening for memory impairment in community dwelling older adults in rural Nigeria: use of the short blessed memory test
	16:20	S. Barbash	OC029	Temporal changes in functional gene group expression occur early in Alzheimer's disease progression
	16:30	A. Strydom	OC030	The London ADSID project – a clinical research database of dementia in older adults with down syndrome and intellectual disabilities
	16:40	R. Van Der Linde	OC031	The presence of behavioral and psychological symptoms and progression to dementia in the cognitively impaired older population



Full Scientific Programme


Thursday 8 March

	16:50	S.-M. Paddick	OC032	The prevalence of behavioral and psychological symptoms of dementia in rural Tanzania
	17:00 – 17:30	Questions		
○	16:00 – 17:30	Parallel Session 8 Imaging and Biomarkers Room 4, Capital Suite Chair: Bruno Dubois		
	16:00	C. W. Ritchie	OC033	A systematic review of the quality and reporting standards of longitudinal biomarker studies in dementia and recommendations
	16:10	A. Lebedev	OC034	Cortical changes associated with depression in Alzheimer's disease: surface-based MRI morphometric study
	16:20	R. N. Martins	OC035	Diet, neuroimaging biomarkers and Alzheimer's disease: data from the Australian imaging, biomarkers and lifestyle study of ageing
	16:30	B. Zhou	OC036	Impaired thalamus connectivity pattern in Alzheimer's disease and mild cognitive impairment: a resting state FMRI study
	16:40	D. Ames	OC037	Three year follow up results from the Australian imaging biomarkers and lifestyle study of ageing
	16:50 – 17:30	Questions		
★	16:00 – 17:30	Parallel Session 9 Living with Dementia: Life History Room 8 & 11, Capital Suite Chair: Helga Rohra		
	16:00	Peter Ashley	LD3	Living With Dementia - Life Story. The "Portrait Of A Life" Toolkit
	16:15	Istvan Kappeter	LD4	Hungarian special teacher, psychiatrist and autodidact futurist: Living with AD since 2006
	16:30	James McKillop	LD4A	Raking up the past
	16:45	Peter Mittler	LD4B	Journey into Alzheimerland
	17:00 – 17:30	Questions		
▲	16:00 – 17:30	Parallel Session 10 Quality of Life Room 14, 15 & 16, Capital Suite Chair: Henry Brodaty		
	16:00	S. L. Tan	OC038	Training eldercare workers in dementia care – findings from the pilot run of the Demact Programme
	16:10	J. Wilkie	OC039	Exploration of institutional dementia care: social engagement and the use of physical restraints



Full Scientific Programme

Thursday 8 March

16:20	I. Ulstein INTERDEM http://www.interdem.org/	OC040	High prevalence of anxiety symptoms in spouses of demented persons
16:30	H. Verbeek	OC041	Quality of life in small-scale, homelike care environments: a quasi-experimental study into effects on residents
16:40	M. Miyamoto	OC042	Renaming dementia in Japan: the change process and its influence
16:50	L. Jackson	OC043	Taking an active part in decisions affecting my later life: an adventure
17:00 – 17:30	Questions		
 16:00 – 17:30	Parallel Session 11 Stigma Room 7 & 12, Capital Suite Chair: TBC		
16:00	M. Ouwehand	OC044	Alzheimer experience
16:10	D. Gove INTERDEM http://www.interdem.org/	OC045	General practitioners' perceptions of dementia as a stigma and their perceptions of lay people's perceptions of dementia as a stigma: implications for action
16:20	A. Kokou	OC046	Dementia faces in to go: what can we do to overcome these realities?
16:30	L. Cartz Piver	OC047	The stig-ma survey: a study of social representations and stigma of Alzheimer's disease in a French rural population
16:40	G. Mcgettrick	OC048	Slaying the dementia dragon: Alzheimer organisations responding to stigma and social isolation
16:50	R. Taylor	OC049	Living without the stigmas of dementia
17:00 – 17:30	Questions		



Full Scientific Programme

Thursday 8 March



16:00 – 17:30

Parallel Session 12

ADI Workshop: 10/66 Dementia Research Group

Room 17, Capital Suite
Chair: Martin Prince

The 10/66 Dementia Research Group has been working continuously since 1998 to develop an evidence - base for policymakers and practitioners, to encourage the development of more and better care for people with dementia worldwide.

This year's symposium allows us to pause and reflect upon what we have learnt, and to receive comments and feedback from ADI's broad membership on the past and future direction of the research program.

The group's 80 publications to date have focussed upon findings from our pilot studies in 26 centres, and our population-based research studies in 12 sites in India, China, Latin America and Africa. The evidence generated has formed an important part of ADI's World Alzheimer Reports on the global prevalence of dementia, the numbers affected, and the societal impact and costs. Incidence studies in China and Latin America were completed in 2010, with findings on new cases, and risk factors now also beginning to emerge.

A new 10/66 study, funded by the UK Department for International Development and the Economic and Social Research Council (DFID/ ESRC) will be focussing on the economic impact on wider households of the onset of needs for care among older people in China, Nigeria, Mexico and Peru.

The group is also focussing, increasingly, on the need to develop and evaluate simple and helpful community-based interventions for people with dementia that do not rely upon specialists to deliver them. The 10/66 'Helping Carers to Care' intervention is a starting point, but how do we ensure that this is integrated into a widely available package of comprehensive diagnosis, assessment, care and support, across the course of the illness?



17:45 – 18:45

Satellite Symposium: The Living Environment: Providing Dementia-Friendly Settings Within Care Homes And Hospitals - Innovation Aligned With Tradition

Sponsored by Bupa Care Services
Room 14, 15 & 16, Capital Suite

Designers should view the needs of people living with dementia as being no different from anybody else and then progress to helping them live with high levels of cognitive, sensory and physical disability. Through the medium of visual and video material, and the interactive website bettercarehomes.org this symposium will illustrate how designers and care providers need to balance support for failing abilities through the creation of prosthetic and enriched environments with a requirement to design pleasing and meaningful buildings. The symposium will look at design initiatives that have helped provide a sense of belonging in private space, delivered supportive interior layouts, and transformed shared communal areas into meaningful 'worlds' to visit.

Speakers:

Grainne Moss, Bupa Care Services New Zealand
Graham Stokes, Divisional Director of Dementia Care, Bupa Care Services
Gregor Timlin, Senior Research Associate, Helen Hamlyn Centre for Design, Royal College of Art
Sarah Waller, Programme Director, Enhancing the Healing Environment Programme, The Kings Fund.



Dispelling Fiction
Parallel Sessions



Living with
Dementia
Parallel Sessions



ADI
Workshops



Satellite
Symposium

Full Scientific Programme

Friday 9 March

08:00 – 18:00	Registration Open (Capital Hall, ICC)		
07:45 – 08:45	Satellite Symposium: Government Alzheimer Plans: Early Returns on Advocacy <i>Sponsored by: Alzheimer Immunotherapy Programme</i> Room 14, 15 & 16, Capital Suite Chair: Jacob Roy Kuriakose		
	<p>This symposium will bring together the first hand accounts of the positive policy change and public awareness of the crisis of dementia facilitated by and amplified by government Alzheimer plans at the city, sub-national and national level. Hear from experts in this nascent area of policy development on the processes used to create engagement and initial results from the plans.</p> <p>Speakers: Convener and Moderator Jacob Roy Kuriakose, Founding Chair, Alzheimer's and Related Disorders Society of India, Chair-elect Alzheimer Disease International Michael Splaine, Public Policy Adviser, ADI: The Emerging Policy Framework in Published Plans Johan Vos, CEO Alzheimer's New Zealand: From an NGO Plan to Government Action: The New Zealand Experience Birgitta Martenson, CEO, Alzheimer Suisse: A Sub-national Plan in the Canton of Vaud Switzerland Kate Fearnley, Deputy Chief Executive, Alzheimer Scotland: Advocates Shape Implementation of the Scottish Government Dementia Strategy Ruth Gay, Public Policy Director, Alzheimer's Association Northern California and Northern Nevada: Alzheimer Planning in a Large City, San Francisco, CA, US Marc Wortmann, Executive Director, ADI: Plans in the Context of ADI's Global Strategy with the World Health Organization</p>		
09:00 – 10:30	Plenary Session Is the Portrayal of Dementia in the Mass Media Enhancing or Reducing Stigma? (Debate) Room 7-12, Capital Suite Chair: Angela Rippon		
09:00	Angela Rippon		Introduction
09:10	Ray Winstone		A personal experience of portraying dementia
09:20	Helga Rohra	PL07	The impact of dementia on my life
09:30	Fiona Phillips	PL08	How does the media manage its responsibilities?
09:40	Louise Sutton		Portraying dementia - a producers view
09:50	Katherine Jarman		Managing representation of people with dementia in the media
10:00 – 10:30	Debate		
10:30 – 11:00	Tea, Coffee, Exhibition and Posters Capital Hall, ICC		

Full Scientific Programme

Friday 9 March



11:00 – 12:30

Plenary Session

Non-Pharmacological Interventions and Ways of Managing Neuropsychiatric Symptoms

Room 7-12, Capital Suite
Chair: Nori Graham

11:00

Martin Orrell

PL09

Cognitive Stimulation Therapy

INTERDEM
<http://www.interdem.org/>

11:30

Sue Fitzsimmons

PL10

The science of using therapeutic activities as interventions for neuropsychiatric behaviours

12:00

Ryuta Kawashima

PL11

Cognitive Training for Dementia Care and Prevention

12:30 – 14:00

Lunch, Exhibition and Posters

Capital Hall, ICC



12:45 – 13:45

Satellite Symposium

Implementing the Results of the NCD Summit: Towards A Shift in Health Policy

Room 14, 15 & 16, Capital Suite
Chair: Mike Hodin

Speakers include:

Judith Watt, CEO of the NCD Alliance
Jane Barratt, Secretary General of the International Federation of Ageing
Richard Blewitt, CEO of HelpAge International
Marc Wortmann, Executive Director, Alzheimer's Disease International



14:00 – 15:30

Parallel Session 13

Patient and Public Involvement in Dementia Research

Room 4, Capital Suite
Chair: Clive Ballard

14:00

C. Cronk

OC050

A drug trial as experienced by a person with dementia

14:10

V. Raymont

OC051

Changes in referrals to a memory clinic – service reflection or representative of substantial public health success

14:20

A. Innes

OC052

Supporting safe walking for people with dementia: user participation in the development of new technology

INTERDEM
<http://www.interdem.org/>

14:30

M. Murray

OC053

How Alzheimer's Society has supported a UK government initiative to prioritise dementia research

14:40

J. Pickett

OC054

What are the priorities of carers and people with dementia for research? An international perspective

14:50

C. Moor

OC055

The 'round table science et cité on dementia': a participatory research project

15:00 – 15:30

Questions



Dispelling Fiction
Parallel Sessions



Living with
Dementia
Parallel Sessions



ADI
Workshops



Satellite
Symposium

Full Scientific Programme

Friday 9 March

▲	14:00 – 15:30	Parallel Session 14 Dementia Friendly Communities Room 7 & 12, Capital Suite Chair: Shivani Nandi		
	14:00	A. Macadam	OC056	Circles of support for people with dementia
	14:10	A. S. Little	OC057	Dementia friendly communities in North East Fife
	14:20	R. Litherland, J. Bell	OC058	Shared lives - family based community living for people with dementia
	14:30	S. Milton	OC059	What does a "dementia – friendly community" mean to people with dementia?
	14:40	G. Stokes	OC060	The living environment and the great outdoors. Delivering dementia-friendly environments within care homes. An example of international collaboration and synergy between the UK, Spain and Australia
	14:50	R. Negarandeh	OC061	Stigma among Iranian family caregivers of persons with Alzheimer disease: a hermeneutic study
	15:00 – 15:30	Questions		
★	14:00 – 15:30	Parallel Session 15 Living with Dementia: Technology Room 8 & 11, Capital Suite Chair: Kate Swaffer		
	14:00	Ann Johnson	LD5	Simple technology solutions
	14:15	Graham Browne	LD6	What is technology?
	14:30	Edward McLaughlin	LD6A	You take the high tech and I'll take the low
	14:45	Peter Ashley	LD7	Technology in the support of people with dementia and their carers, professionals and research
	15:00 – 15:30	Questions		
▲	14:00 – 15:30	Parallel Session 16 Training and Support of Informal and Professional Carers I Room 14, 15 & 16, Capital Suite Chair: Robert Woods		
	14:00	C. Surr	OC062	Developing an informed and effective care home workforce: a learning partnership between higher education and a national care provider organisation
	14:10	M. Shulz	OC063	Connecting people with dementia and caregivers early to education and support
	14:20	S. Davidson	OC064	Post-falls assessment & management in persons with dementia
	14:30	C.-Y. Chen	OC065	The early intervention services in Taiwan



Full Scientific Programme

Friday 9 March

	14:40	S. D. Gilster	OC066	The physician and pharmacist as teachers in a specialised Alzheimer's facility
	14:50	M. Mittleman	OC067	The NYU Caregiver Intervention: Results and Challenges in Current Implementations in the Community
	15:00 – 15:30	Questions		
▲	14:00 – 15:30	Parallel Session 17 Leisure and Meaningful Experiences in Dementia Room 9 & 10, Capital Suite Chairs: Sherry Dupuis		
	14:00	C. Heymanson	OC068	Circle dance for well-being in dementia
	14:10	K. Juva	OC069	Experiences and the need of help of just diagnosed memory patients and their relatives
	14:20	S. Oppikofer	OC070	Home care respite films: offering relief for caregivers by simulated multimodal presence and activation for persons with dementia?
	14:30	E. Steeman INTERDEM http://www.interdem.org/	OC071	Living with early-stage dementia: maintaining a sense of being valued
	14:40	F. Farin	OC072	Mental and physical rehabilitation in PWD by celebrating traditional occasions and reminiscence
	14:50	J. Zeizel	OC073	C-MAP Lifelong Learning Academy For People With Dementia
	15:00 – 15:30	Questions		
+	14:00 – 15:30	Parallel Session 18 ADI Workshop: Global Campaign on Alzheimer's Room 17, Capital Suite Chair: Marc Wortmann		
		<p>In this workshop we will present the world's first global awareness and fundraising campaign for Alzheimer's, that will be piloted with five ADI-member associations in Brazil, Canada, Greece, India and New Zealand later this year. The campaign aims to change the way we look at the disease and will set a target to double the non-pharma research budget for Alzheimer's. You will see the campaign, and find out how you can be involved. Don't miss this session if you work for or are involved in an Alzheimer association!</p> <p>Speakers: Jon Duschinsky, bethechange Ray Barrett, Hey Harry</p>		
	15:30 – 16:00	Tea, Coffee, Exhibition and Posters Capital Hall, ICC		



Dispelling Fiction
Parallel Sessions



Living with
Dementia
Parallel Sessions



ADI
Workshops



Satellite
Symposium

Full Scientific Programme

Friday 9 March

○	16:00 – 17:30	Parallel Session 19 Other Dementias Room 4, Capital Suite Chair: Maurice O'Connell		
	16:00	B. Draper	OC074	Alcohol and dementia: a potent cocktail
	16:10	J. O'Donovan	OC075	Does posterior cortical atrophy on MRI discriminate between Alzheimer's disease, dementia with lewy bodies and normal aging
	16:20	A. Dregan	OC076	Is illicit drug use harmful to cognitive functioning in mid-adult years?
	16:30	K. Seeher	OC077	Negative outcomes for MCI caregivers – evidence from a systematic literature review
	16:40	K. Swaffer	OC078	Non pharmacological interventions for dementia
	16:50	R. Jones	OC079A	Clinical and biomarker characteristics of responders to elnd005 (scyllo-inositol): data from a phase 2 study in mild to moderate Alzheimer's disease
	17:00 – 17:30	Questions		
▲	16:00 – 17:30	Parallel Session 20 Knowledge Translation Room 7 & 12, Capital Suite Chairs: Mary Schulz		
	16:00	M. Foroughan	OC080	Dementia care-givers psychological health in Iran: preliminary findings
	16:10	S. Iliffe	OC081	Evidence based interventions in dementia: the evidem early diagnosis trial
	16:20	S. Kehoe	OC082	How CDKTN links knowledge translated research to users
	16:30	S. Auer	OC083	Master course for dementia studies at the Danube university Krems, Austria
	16:40	L. Loiselle	OC084	Supporting persons with dementia in knowledge generation and translation
	16:50	I. Thuné-Boyle	OC085	The effect of exercise on behavioral and psychological symptoms in dementia: a review of the literature
	17:00 – 17:30	Questions		

Full Scientific Programme

Friday 9 March



16:00 – 17:30

Parallel Session 21

Living with Dementia: End of Life Issues

Room 8 & 11, Capital Suite
Chair: Daphne Wallace

16:00

Ann Johnson

LD8

End of Life

16:15

Richard Taylor

LD9

When do end of life issues/needs/wants/care begin? What begins and what ends? Why?

16:30

Agnes Houston

LD9A

Anticipating and embracing the later me

16:45

Peter Dunlop

LD9B

End of life management a waking nightmare?

17:00

Questions



16:00 – 17:30

Parallel Session 22

Non Pharmacological Interventions

Room 9 & 10, Capital Suite
Chair: TBC

16:00

F. F. Oliveira

OC087

Caregiver awareness of diagnosis and treatment of cerebrovascular risk factors in patients with dementia due to Alzheimer's disease at an university hospital in São Paulo, Brazil

16:10

H. van Hout

OC088

Does a family meetings intervention prevent depression and anxiety in family caregivers of dementia patients? A randomised trial

16:20

C. Goodman

OC089

End of life care for people with dementia: an intervention to promote integrated working between care home staff and health care practitioners

16:30

K. Charas

OC090

Implementation of a dementia friendly environmental design model for special care units congruent with human rights

16:40

H. Brodaty

OC091

The effects of humour therapy depend on management and staff engagement: results from the Sydney multisite intervention of laughterbosses and elderclowns (smile) clustered randomised controlled trial

16:50

F. Kounti

OC092

Two years study on the efficacy of cognitive training in patients with multiple cognitive domain and amnesia mild cognitive impairment (mdmca)

17:00 – 17:30

Questions



Dispelling Fiction
Parallel Sessions



Living with
Dementia
Parallel Sessions



ADI
Workshops



Satellite
Symposium

Full Scientific Programme

Friday 9 March



16:00 – 17:30

Parallel Session 23

Person Centered Care II

Room 14, 15 & 16, Capital Suite
Chair: Esme Moniz-Cook

16:00

K. Jutlla

OC093

A qualitative study of the experiences of Sikh carers of people with dementia in Wolverhampton, UK – the need for a person-centred approach to care

16:10

D. Brooker

OC094

Better outcomes for patients with dementia and acute conditions: reach-out care bundle

INTERDEM
<http://www.interdem.org/>

16:20

J. La Fontaine

OC095

How can I tell you what's going on here? The development of piece-dem: an observational framework focusing on the experience of residents with advanced dementia living in care homes

INTERDEM
<http://www.interdem.org/>

16:30

D. Troxel

OC096

How to develop a new dementia care program – the expressions example

16:40

M. Munch

OC097

The marte meo method in prevention of resistance behavior in morning care situations

16:50

L. Chenoweth

OC098

The persen study: supporting client outcomes in the residential dementia care setting

17:00 – 17:30

Questions





Full Scientific Programme

Friday 9 March



16:00 – 17:30

Parallel Session 24

ADI Workshop: Working with Volunteers

Room 17, Capital Suite
Chair: Jane Cziborra

Across the world people give their time freely to help others in need, whether on a weekly basis, once a month or once a year. This is a global force of positive community action that deserves the best support we can provide.

In this workshop you will meet volunteers and employees from Alzheimer's Society in the UK, together with a colleague from Alzheimer Nederland.

You will learn about developments in volunteer recruitment and support, and hear about the online training experiences of the United Kingdom and Netherlands. You will also get to know what volunteering is like at local community level too, with UK volunteers sharing their experiences.

It will be an opportunity to learn, share ideas and be inspired. From talking action to ensuring that time offered by volunteers is converted into something that makes a real difference.

Volunteering is at the very heart of Society. We want to keep it that way. We want to do more of it. We want to do it better. If you agree, then join us.

This workshop is ideal for you if you want:

- ideas about volunteer recruitment and support and how to make it better
- to understand how online learning can revolutionise your volunteer training

Bring plenty of thoughts and ideas.

Speakers:

Andrew Oldham, Alzheimer's Society
Christine Cribb, Alzheimer's Society
Willem Richter, Alzheimer Nederlands

We look forward to meeting you!



17:45 - 18:15

Satellite Symposium

WATCHIE "Advanced Personal Locator"

Sponsored by Watchie, in conjunction with lostnfound
Room 14, 15 & 16, Capital Suite

Speaker: Daniel Thommen, CEO of Lostnfound

Introducing 'Watchie', an advanced personal locating device designed to give peace of mind to families concerned with their loved ones whereabouts. Presentation of all Watchie functions and benefits.

19:00 – 00:00

Conference Dinner

Painted Hall, Greenwich



Dispersing Fiction
Parallel Sessions



Living with
Dementia
Parallel Sessions



ADI
Workshops



Satellite
Symposium

Full Scientific Programme

Saturday 10 March



08:30 – 14:00 Registration Open (Capital Hall, ICC)

09:00 – 10:30

Parallel Session 25

Policy Issues

Room 4, Capital Suite
Chair: Robert Yeoh

09:00	A.-M. Bruijs	OC099	Case management & dementia networks in the Netherlands
09:10	S. Bharath	OC100	Cost of dementia - Indian scenario
09:20	R. Thompson	OC101	Making general hospitals fit for dementia care
09:30	C. Ballard	OC102	Managing behavioral and psychological symptoms in people with dementia in care homes
09:40	V. Rocha	OC103	The (ab)use of anti-psychotics in people with dementia according to the living conditions
09:50	F. Sudbury & Duncan Robertson	OC104	A-MOP: an antipsychotic medication optimization program for long term care
10:00 – 10:30	Questions		



09:00 – 10:30

Parallel Session 26

Prevention and Risk Reduction

Room 7 & 12, Capital Suite
Chair: Yasmin Raashid

09:00	Z. Liu	OC105	A follow up study of mild cognitive impairment incidence and conversion in two communities in urban and rural Beijing
09:10	S. Andrieu	OC106	MAPT Study: a 3-year randomized trial of Omega 3 and/or multidomain intervention for the prevention of cognitive decline in frail elderly subjects. Methodological issues.
09:20	S. Forstmeier INTERDEM http://www.interdem.org/	OC107	Differential impact of midlife motivational abilities on cognitive impairment and depression/apathy in Alzheimer's patients
09:30	M. Kivipelto	OC108	Finnish geriatric intervention study to prevent cognitive impairment and disability (FINGER)
09:40	S. Poole	OC109	Preliminary evidence for a link between periodontal disease and Alzheimer's disease
09:50	L.-W. Chu	OC110	Serum clusterin levels and the risk of Alzheimer's disease in Chinese older adults with amnesic mild cognitive impairment. A 3-year prospective cohort study
10:00	E. Richard	OC110A	Prevention of dementia by intensive vascular care – the prediva study
10:10 – 10:30	Questions		



Full Scientific Programme

Saturday 10 March



09:00 – 10:30

Parallel Session 27

Living with Dementia: This is Me

Room 8 & 11, Capital Suite

Chair: Laura Bramly

People living with dementia from around the world will speak, either by video recording or live presentation, about what dementia means to them.

Confirmed speakers to date:

Agnes Houston, Edward McLaughlin, Henry Rankin, Ross Campbell, Nancy McAdam, James McKillop, Christine Bryden, Helga Rohra, Lynn Jackson, Richard Taylor, István Kappeter, Carol Cronk, Peter Ashley, Kate Swaffer, Ann Johnson, Trevor Jarvis, Jennifer Bute



09:00 – 10:30

Parallel Session 28

Shaping the Image of Dementia Through the Arts

Room 9 & 10, Capital Suite

Chair: Berna Huebner

09:00	K. Williams	OC111	A unique partnership for an artistic and intergenerational project involving people with dementia: 800 kites fly over the French Riviera on World Alzheimer's Day
09:10	F. Rosenberg	OC112	Arts and music programs for people with dementia: an educational approach
09:20	M. Burns	OC113	Creative journeys: art as the language of dementia
09:30	G. Morris	OC114	Fictional representations of dementia and their educational potential
09:40	J. Schneider	OC115	Inside out of mind: a play based on research in dementia wards
09:50	R. Bartlett	OC116	Using 'activist art' to mediate agency within the dementia fraternity
10:00 – 10:30	Questions		



Dispelling Fiction
Parallel Sessions



Living with
Dementia
Parallel Sessions



ADI
Workshops



Satellite
Symposium


Full Scientific Programme

Saturday 10 March

▲	09:00 – 10:30	Parallel Session 29 Training and Support of Informal and Professional Carers II Room 14, 15 & 16, Capital Suite Chair: Lynn Chenoweth		
	09:00	N. Crellin INTERDEM http://www.interdem.org/	OC117	A measure of family carer efficacy for managing neuropsychiatric symptoms in dementia
	09:10	J. Pace	OC118	Caring & coping: experiences of formal and informal care -giving among aboriginal communities in Ontario, Canada
	09:20	M. Couture	OC119	Choosing a living environment for a relative with dementia: developing a decision-aid for family carers based on a systematic review of qualitative studies
	09:30	K. Wolf-Ostermann	OC120	Does improvement in quality of care lead to better quality of life? - results from a longitudinal study in German shared-housing arrangements
	09:30	C. Hart INTERDEM http://www.interdem.org/	OC121	Functional analysis for challenging behaviour in dementia: development of an e-tool for care homes
	09:40	H. Van Der Roest INTERDEM http://www.interdem.org/	OC122	Skills training and re-skilling for carers of people with dementia. A European lifelong learning project delivering online training in dementia care
	09:50 – 10:30	Questions		
+	09:00 – 10:30	Parallel Session 30 ADI Workshop: The Research Agenda for Alzheimer Associations Room 17, Capital Suite Chair: Marc Wortmann		
		<p>The workshop will look at the research programs established by Alzheimer associations around the world. What are their objectives? How are priorities decided? Are people with dementia or carers involved? Do they work together with universities, governments or other NGOs?</p> <p>The session will begin with the results from a mini survey of Alzheimer associations that fund research, highlighting the amount of funding given to research, and policies they have established.</p> <p>Speakers: James Pickett, Research Grant Officer, Alzheimer's Society (England, Wales and Northern Ireland) Glenn Rees, CEO, Alzheimer's Australia Marco Blom, Director of Research and Policy, Alzheimer Nederland Harry Johns, President and CEO, Alzheimer's Association (USA)</p>		
	10:30 – 11:00	Tea, Coffee, Exhibition and Posters Capital Hall, ICC		

Full Scientific Programme

Saturday 10 March

	11:00 – 12:30	Plenary Session Prevention and Risk Reduction (Debate) Room 7-12, Capital Suite Chair: Dale Goldhawk		
		Debate: "The house proposes that we believe that we have sufficient knowledge to prevent a substantial number of people from developing dementia with the right public health interventions"		
	11:00	Carol Brayne	PL12	Reflections on epidemiology of dementia and related conditions from a public health perspective
	11:30	Miia Kivipelto	PL13	Prevention of Alzheimer's disease, is it possible?
	12:00	Debate		
	12:30 – 13:00	Closing Ceremony Room 7-12, Capital Suite Chair: TBC		
	12:30	Marc Wortmann		Summary of Conference
	12:35	Daisy Acosta / Jacob Roy Kuriakose		Handover of chairman's duties
	12:40	Jacob Roy Kuriakose		Closing remarks
	12:50	Ming-Jang Chiu, Conference Chair, TADA		Introduction to ADI 2013

Poster Presentations

All posters will be displayed for the entire conference.

The following presenters will stand by their board on Thursday 8 March, between 12:45 and 13:45.

Molecular Research	
P001	CHARACTERISATION OF THE INTERACTION BETWEEN TOXIC AMYLOID BETA ASSEMBLIES AND THE CELLULAR PRION PROTEIN / A. Nicoll - M. Farmer - S. Panico - D. B. Freir - E. Risse - M. A. Farrow - H. Saibil - D. M. Walsh - J. Collinge
P002	SURGERY ACCELERATES ALZHEIMER'S: FACT OR FICTION? / D. Lloyd - H. Watts - M. Vizcaychipi - D. Ma
P003	CDK11, A NOVEL G2 PHASE KINASE, IS DIFFERENTIALLY EXPRESSED IN NEURONS OF ALZHEIMER'S BRAIN AND M17 NEUROBLASTOMA CELLS OF THE SWEDISH MUTANT PHENOTYPE / V. Bajic - B. S. Potparevic - Z. Milicevic - D. Ilievski - B. P. Solarovic
P004	THE ROLE OF ENDOPLASMIC RETICULUM STRESS-INDUCED APOPTOSIS IN ALZHEIMER'S DISEASE / I. Stefani - K. Polizzi - C. Kontoravdi
P005	MAPPING NEUROINFLAMMATION IN ALZHEIMER'S DISEASE: A PET STUDY / I. Suridjan - R. Mizrahi - P. Rusjan - S. Houle - A. Wilson - B. Pollock
P008	THE HUMAN CAVEOLIN 1 GENE UPSTREAM PURINE COMPLEX AND NEURODEGENERATION - A COMMON SIGNATURE. / M. Ohadi
P009	CYANINE DYES AS FLUORESCENT PROBES FOR DETECTION OF OLIGOMERIC AGGREGATES OF ALPHA-SYNUCLEIN / M. Losytskyy - V. B. Kovalska - O. I. Tolmachev - Y. L. Slominskii - V. Subramaniam - I. M. Segers-Nolten - S. M. Yarmoluk
P010	PLASMA FETUIN-AIS ASSOCIATED WITH THE SEVERITY OF COGNITIVE IMPAIRMENT IN MILD TO MODERATE ALZHEIMER'S DISEASE / E. Smith - R. Nilforooshan - G. Weaving - N. Tabet
P012	ADAM10 AND ALZHEIMER'S DISEASE: A STUDY WITH BRAZILIAN ELDERLY / S. Pavarini - P. R. Manzi - M. R. Cominetti - H. S. S. de Araujo - F. D. A. C. do Vale - E. J. Barham
P013	PROBDNF AND THE VAL66MET POLYMORPHISM IN ALZHEIMER'S DISEASE / S. Kailainathan - J. J. Watson - M. Fahey - S. Tyler - D. Shoemark - S. Scoltock - K. Cho - S. Allen
P014	ANTI-FIBRILLOGENIC ACTIVITY OF PHTHALOCYANINES CONTAINING OUT-OF-PLANE LIGANDS / V. Kovalska - M. Y. Losytskyy - V. Y. Chernii - I. N. Tretyakova - V. V. Cherepanov - S. M. Yarmoluk - S. V. Volkov
P015	RETINOIC ACID ATTENUATES AMYLOID-BETA PRODUCTION BY DIRECTLY INHIBITING GAMMA-SECRETASE-MEDIATED CLEAVAGE OF AMYLOID PRECURSOR PROTEIN / Y.-F. Liao - B.-J. Wang - A. Kapoor

New and Future Treatments	
P017	CARDIOVASCULAR RISK FACTORS AND COGNITIVE DECLINE IN OLDER ADULTS: A POPULATION-BASED COHORT STUDY / A. Dregan - M. Gulliford
P018	THE EFFECT OF CINNAMON ON LEARNING AND MEMORY IN RATS / A. Vahidimehrjardi and M.H. Dashti-R, N. Bashardoost, H., M. Mojdeh
P019	EMPATHY AS A PREREQUISITE FOR GOOD CARE: CAN WE ENHANCE EMPATHY IN THE CARE FOR PEOPLE WITH ALZHEIMER'S DISEASE? / C. A. Campman - M. M. Sitskoorn
P020	STATINS USE AND RISK OF INCIDENT DEMENTIA - A NATIONWIDE POPULATION-BASED STUDY / C. J. Lu - Y. Sun
P021	NEUROPHYSIOLOGICAL EVALUATION OF DEMENTIA-RELATED INTERVENTIONS: THE CASE OF THE LONG LASTING MEMORIES PROJECT / C. Frantzidis - A. K. Ladas - A. Semertzidou - M. Karagianni - A. Vivas - M. Tsohaki - P. Bamidis
P022	COGNITIVE AND FUNCTIONAL IMPACT OF REPEATED CAT CYCLES IN ALZHEIMER'S DISEASE / D. Gollin - E. Talassi - A. Ferrari - A. Peruzzi - C. Ruaro - A. Codemo - A. La Sala - S. Poli - A. M. Chiamenti - C. Gabelli
P023	CONTRIBUTION OF A COGNITIVE ACTIVATION PROTOCOL (CAT) TO IMPROVE FUNCTIONAL ABILITIES IN ALZHEIMER'S DISEASE PATIENTS / D. Gollin - A. Ferrari - E. Talassi - A. Peruzzi - C. Ruaro - A. Codemo - A. La Sala - S. Poli - A. M. Chiamenti - C. Gabelli



Poster Presentations

All posters will be displayed for the entire conference.

The following presenters will stand by their board on Thursday 8 March, between 12:45 and 13:45.

New and Future Treatments	
P025	SYSTEMATIC REVIEW OF THE EFFECTIVENESS OF SENSORY, PSYCHOLOGICAL AND BEHAVIOURAL INTERVENTIONS FOR MANAGING AGITATION IN OLDER ADULTS WITH DEMENTIA / G. Livingston - C. Cooper - C. Katona - L. Kelly - E. Lewis-Holmes - S. Morris - R. Omar
P026	BRAINS FOR DEMENTIA RESEARCH – PROVIDING HUMAN TISSUE FOR DEMENTIA RESEARCH TO PROMOTE UNDERSTANDING OF PATHOGENESIS AND AID DRUG DISCOVERY / G. M. Hayes - R. Hudspith - P. T. Francis
P027	USE OF THE DOLL WITH DEMENTIA-AFFECTED PATIENT WITH BEHAVIOUR DISTURBANCES IN A NURSING HOME FOR ALZHEIMER PATIENTS / I. G. Cilesi
P028	THERAPEUTIC VIRTUAL TRAIN WITH DEMENTIA-AFFECTED PATIENTS WITH BEHAVIOUR DISTURBANCES IN A NURSING HOME FOR ALZHEIMER PATIENTS / I. G. Cilesi
P029	INTELLECTUAL DISABILITIES AND ANTI-DEMENTIA MEDICATION / K. Courtenay
P030	EFFECT OF FERULIC ACID AND ANGELICA ARCHANGELICA EXTRACT ON BEHAVIORAL AND PSYCHOLOGICAL SYMPTOMS OF DEMENTIA (BPSD) OF ALZHEIMER DISEASE (AD) AND DEMENTIA WITH LEWY BODY DISEASES (DLB). / K. Kanaya (JP) - S. Abe - M. Sakai - H. Fujii - K. Koizumi - T. Iwamoto - T. Azekawa - A. Itami
P031	INDIVIDUAL COGNITIVE STIMULATION THERAPY FOR DEMENTIA / L. Yates - M. Orrell - V. Orgeta - R. Woods - E. Moniz-Cook - I. Russell - A. Burns - Z. Hoare - M. Knapp - A. Spector
P032	ELECTROPHYSIOLOGICAL AND MOLECULAR ASSESSMENT OF NEUROPROTECTIVE EFFECT OF CB1 CANNABINOID RECEPTOR ACTIVATION IN A RAT MODEL OF ALZHEIMER'S DISEASE / M. Janahmadi - M. Haghani
P033	THE EFFECT OF KOMBUCHA TEA ON ACTIVE AVOIDANCE LEARNING AND MEMORY IN RATS / M. Mirvakili - A. morshedi - M. H. Dashti-R
P034	LONG LASTING MEMORIES INTERNATIONAL PROJECT: IMPROVEMENTS IN EXECUTIVE FUNCTION IN DEMENTIA AND MILD COGNITIVE IMPAIRED PATIENTS AFTER COGNITIVE AND PHYSICAL LLM TRAINING / M. Franco Martin (ES) - M. Bernate - E. Parra - F. Gonzalez Palau - R. Losada - Y. Ruiz - A. Solis - Y. Bueno - C. Turuelo - J. M. Toribio - L. Perez
P035	BARRIERS AND FACILITATORS FOR IMPLEMENTING AN EVIDENCE-BASED OCCUPATIONAL THERAPY GUIDELINE FOR OLDER PEOPLE WITH DEMENTIA AND THEIR CARERS / M. Graff - N. V. T. Leven - M. Vernooij-Dassen
P036	THE EFFECT OF FRANKINCENSE ON COGNITION IN MICE MODEL OF ALZHEIMER'S DISEASE / M. H. Dashti-R - S. M. Bagheri - A. Akrami-A - A. Dehghanpoor - M. Khodayar
P037	THE EFFECT OF CROCUS SATIVUS (SAFFRON) EXTRACT ON PASSIVE AVOIDANCE LEARNING AND MEMORY TASK IN ALZHEIMER MODEL MICE. / M. Anvari - M. H. Dashti-r - F. Zeinali - S. M. Hosseini
P038	NUTRITIONAL SUPPLEMENT COMBINATION THERAPY EFFECTIVE IN AD MOUSE MODEL; NOW TESTING FEASIBILITY, SAFETY AND BIOMARKERS IN CLINICAL TRIAL WITH COGNITIVELY NORMAL ADULTS / N. B. Emerson Lombardo - J. Valla - E. Harris - S. Auerbach
P039	DIMEBON, A POTENTIAL DRUG FOR TREATMENT OF ALZHEIMER'S DISEASE: STUDIES OF THE MECHANISMS OF DISEASE-MODIFYING ACTION. / O. Peters
P040	MEMANTINE FOR AGITATION (MAG-D): POST-HOC ANALYSES OF RCT. IS RETRIEVAL OF DROPOUTS THE BEST WAY TO MANAGE MISSING DATA? / R. Mcshane
P041	FUNCTIONAL EXAMINATION OF HU-YI-NENG, DIET SUPPLEMENT, IN ITS ANTI-OXIDANT EFFECTS / S.-J. Wu - M.-L. Tsei - T.-J. Hsieh - C.-H. Chen
P042	SIMVASTATIN ATTENUATES TAU PROTEIN HYPERPHOSPHORYLATION INDUCED BY OKADAIC ACID IN RAT CORTICAL NEURONS / T. Ma - Y. Kong - X. Lu
P043	SAFFRON EXTRACT IMPROVES ACTIVE AVOIDANCE LEARNING TASK IN COGNITIVE DEFICIT OVARIECTOMIZED MICE / V. Arazkhani - M. Anvari - M. H. Dashti-r
P044	FOOT MASSAGE VS PRESENCE FOR AGITATION / W. Moyle (AU) - E. Beattie - M. Cooke - D. Shum - M. Casey - S. O'Dwyer

Poster Presentations

All posters will be displayed for the entire conference.

The following presenters will stand by their board on Thursday 8 March, between 12:45 and 13:45.

Diagnosis	
P045	THE PREVALENCE OF DEMENTIA AND COGNITIVE IMPAIRMENT AMONG OLDER PEOPLE IN SUB-SAHARAN AFRICA: A SYSTEMATIC REVIEW AND META-ANALYSIS. / A. Mavrodaris - J. Powell - M. Thorogood
P046	AN EVALUATION OF TELEHEALTH FOR ASSESSMENT AND MANAGEMENT OF DEMENTIA IN REMOTE SCOTTISH COMMUNITIES / A. Innes - L. McCabe
P047	THE "NEED TO KNOW": THE VALUE OF ASSESSMENT AND DIAGNOSIS FOR CAREGIVERS OF INDIVIDUALS REFERRED TO A RURAL AND REMOTE MEMORY CLINIC / D. Morgan - S. Walls-Ingram - A. Cammer - M. Crossley - D. Forbes - A. Innes - M. O'Connell - N. Stewart
P049	DEAF PEOPLE WITH DEMENTIA AND THEIR CARERS: COMMUNICATING EXPERIENCES, ATTITUDES AND SERVICE PROVISION / E. Ferguson-Coleman - A. Young - J. Keady - B. Woll - J. Atkinson - K. Rogers - T. Denmark - R. Geall - J. Marshall - A. Burns and Deaf with Dementia
P050	RELEVANT OUTCOME SCALE ALZHEIMER'S DISEASE, VALIDATION IN MEXICAN POPULATION OF THE NATIONAL INSTITUTE OF NEUROLOGY AND NEUROSURGERY "MANUEL VELASCO SUÁREZ" / E. M. Longoria Ibarrola - G. I. Acosta Castillo - A. L. Sosa Ortiz and 10/66
P051	SLEEP IN THE NEUROPSYCHIATRIC EVALUATION OF PATIENTS WITH DEMENTIA DUE TO ALZHEIMER'S DISEASE / F. F. Oliveira - P. H. F. Bertolucci - E. S. Chen - M. A. C. Smith
P052	AN EXPLORATION OF PATIENT EXPERIENCES AROUND DIAGNOSIS AND TREATMENT OF DEMENTIA: IMPLICATIONS FOR SERVICE DELIVERY / F. Bunn - K. Sworn - C. Goodman - C. Brayne - S. Iliffe - G. Rait - L. Robinson - E. McNeilly
P053	EARLY SIGNS OF FUNCTIONAL DECLINE AND DISEASE IN AGEING PEOPLE WITH INTELLECTUAL DISABILITIES. / F. K. Larsen
P054	DEMENTIA IN ARMENIA: THE PROBLEM, STRUCTURE AND APPROACHES / H. Manvelyan (AM) - A. Avetisyan - A. Karapetyan - A. Karapetyan - M. Hakobyan - E. Gevorgyan - M. Aghajanyan and Alzheimer Disease Association of Armenia
P055	EARLY DIAGNOSIS OF DEMENTIA IN PLYMOUTH: THE GPS AND CARERS EXPERIENCE / I. Sherriff - H. McFarlane
P056	EARLY ONSET ALZHEIMER'S DISEASE IN CARIBBEAN HISPANICS: ATYPICAL PRESENTATION / I. Z. Jimenez-Velazquez - A. Maldonado - L. Robles - M. Gonzalez-Viruet - J. J. Gonzalez-Concepcion
P057	AGE-RELATED CHANGE IN EPISODIC MEMORY: EVIDENCE FROM ERPS / K. Kilborn - S. Connell
P059	VALIDATION OF THE INFORMANT QUESTIONNAIRE ON COGNITIVE DECLINE IN THE ELDERLY (IQCODE): PRELIMINARY FINDINGS IN THE ELDELY POPULATION OF IRAN / M. Foroughan - A. Seiger - Z. Ghaemmagham Farahani - Z. Jafari - L. O. Wahlund
P060	DEPRESSION AMONG HOME-DWELLING OLDER PEOPLE AT THE TIME OF A DEMENTIA ASSESSMENT IN PRIMARY CARE / M. Gausdal - K. Engedal - P. K. Haugen
P061	"ON THE BATTLEFIELD" -BATTLE FOR THE NATIONAL DEMENTIA PLAN / M. Moglan - C. Tudose - L. Dobranici - C. Popescu
P063	DEMENTIA AND MILD COGNITIVE IMPAIRMENT EPIDEMIOLOGY IN COSTA RICA. FIRST DATA BASE REPORT. / N. Román-Garita - C. Boza-Calvo - L. Salazar-Sánchez - A. Kozakova-Valchuk
P064	INFRARED SPECTRA OF PERIPHERAL MONONUCLEAR LEUKOCYTES AS A TOOL FOR ALZHEIMER DISEASE DIAGNOSTICS / P. Carmona - A. Toledano - I. Alvarez - S. Ruiz - A. Feliu - M. Molina - M. Calero - P. Martínez - F. Bermejo
P065	NEW DIAGNOSTIC GUIDELINES FOR ALZHEIMER'S DISEASE DO PATIENTS BENEFIT? ? / P. Whitehouse - D. George - G. Perry
P066	ALGORITHMIC CASE PREDICTION OF DEMENTIA IN RELATION TO LOCAL CLINICIAN DIAGNOSIS IN AN INDIGENOUS SOUTH AFRICAN POPULATION. / R. Vanderpoel - M. Heyns and 10/66 Dementia Research Group



Poster Presentations

All posters will be displayed for the entire conference.

The following presenters will stand by their board on Thursday 8 March, between 12:45 and 13:45.

Diagnosis

P067	DIABETES, DEPRESSION, ADVERSE CHILDHOOD EXPERIENCES AND SUBJECTIVE MEMORY COMPLAINTS IN YOUNG OLD ADULTS IN ASABA, SOUTH SOUTH NIGERIA. / R. Uwakwe (NG) - I. -.- Adaigho - I. A. Modebe
P069	COGNITIVE TESTING IN ELDERLY TURKISH IMMIGRANTS / T. R. Nielsen (DK) - G. Waldemar
P070	DIAGNOSTIC TEST ACCURACY OF INFORMANT QUESTIONNAIRE FOR COGNITIVE DECLINE IN THE ELDERLY (IQCODE) – SYSTEMATIC REVIEW / T. Quinn - P. Fearon - A. Noel-Storr - R. McShane - D. Stott
P071	RELIABILITY OF ‘DEMENTIA’ OUTCOME / T. Quinn - R. McShane
P072	A METHODOLOGICAL APPROACH FOR MONITORING SPEECH PERSEVERATION IN ALZHEIMER’S DISEASE / V. Nemes - D. Nikolic - A. Barney - P. Garrard
P073	PHASE AVERAGE WAVEFORM OF ELECTROENCEPHALOGRAPH SIGNALS IN ALZHEIMER DISEASE USING WAVELET TRANSFORMATION / Z. Meiyun - Z. Benshu - J. Nan
P073A	INTRODUCING THE DECIDE E-SERVICE FOR ALZHEIMER DISEASE EARLY DIAGNOSIS AND RESEARCH / M Vario- F Galeazzi – F Tanlongo

Imaging of Dementia

P106	HIPPOCAMPUS ATROPHY IN GERIATRIC DEPRESSION / D. Enache (SE) - L. Cavallin - E. Westman - L.-O. Wahlund - M. Gregoric Kramberger - V. Jelic - M. Eriksdotter Jönghagen - B. Winblad - D. Aarsland
P107	HIPPOCAMPAL VOLUME AND DEPRESSION IN MILD DEMENTIA / F. Fritze - N. Chow - H. Honarpisheh - M. K. Beyer - A. Rongve - P. M. Thompson - L. Apostolova - D. Årslund
P108	ENTORHINAL CORTEX VOLUME PREDICTS COGNITIVE DECLINE IN ALZHEIMER’S DISEASE / L. Velayudhan - P. Proitsi - A. Hodges - S. Lovestone - A. Simmons and The AddNeuroMed Consortium
P109	PERIPHERAL RETINAL DRUSEN AS A POTENTIAL SURROGATE MARKER FOR ALZHEIMER’S DEMENTIA: A PILOT STUDY USING ULTRA-WIDE FIELD IMAGING / N. Barzegar-Befroei - T. Peto - C. W. Ritchie - I. Lengyel

Technology

P110	A EUROPEAN PROJECT TO MAKE MULTIMEDIA TECHNOLOGY ACCESSIBLE FOR PEOPLE WITH DEMENTIA / D. Brooks - R. Dutton - N. Savitch - E. Schulze - R. Hellman
P111	SOCIAL ASSISTIVE ROBOTS FOR ALZHEIMER’S DISEASE CARE: INVOLVING END-USERS THROUGHOUT THE DESIGN AND DEVELOPMENT CYCLE / M. Pino (FR) - M. Boulay - A.-S. Rigaud and the QuoVADis project

Poster Presentations

All posters will be displayed for the entire conference.

The following presenters will stand by their board on Thursday 8 March, between 12:45 and 13:45.

Quality of Life and Rights of People with Dementia	
P221	THE WELLBEING EVALUATION SCALE: DEVELOPMENT AND PROPERTIES / A. Papadopoulos
P222	THE USE OF PHYSICAL RESTRAINTS IN NURSING HOME CARE: CHANGES OVER TIME? / A. M. Pot - B. Willemse - D. Smit - J. de Lange
P223	CARE DIFFICULTIES AND DESIRED SUPPORT OF FAMILY CAREGIVERS TAKING CARE OF PEOPLE WITH DEMENTIA AT HOME / C. Greiner (JP) - T. Isowa - E. Kishi - T. Oishi - A. Fukahori - K. Matsuo
P224	CORRELATES OF QUALITY OF LIFE IN A GROUP OF CHILEAN PEOPLE WITH DEMENTIA / C. Miranda-Castillo (CL)
P226	WHAT WORK'S RESOURCE PACK WHEN INVOLVING AND CONSULTING WITH PEOPLE LIVING WITH DEMENTIA. / A. Rollings - D. Donnison
P227	IMPLEMENTATION OF CAPACITY BUILDING - NATIONAL OUTREACH PROGRAM - LEBANON / D. Mansour (LB)
P228	DEMENTIA - UNDERSTANDING IT AS A DISEASE IN THE SUB-SAHARA AFRICA - PERSONS WITH DEMENTIA ARE UNIQUELY INDIVIDUALS WHO HAS THE RIGHT OF FULLNESS OF LIFE AND DIGNITY / D. Boatemah
P229	DEMANDS AND COMPLAINTS OF FAMILY AND CAREGIVERS' OF PEOPLE WITH ALZHEIMER'S / F. Ortiz Moreno
P230	QUALITY OF LIFE IN PEOPLE WITH DEMENTIA AND THEIR FAMILY CARERS. / F. Bruvik - K. Engedal - A. Hylen Ranhoff - I. Ulstein
P232	THE CHANGING PERCEPTIONS OF PAIN ASSESSMENT AMONG NURSES IN JAPANESE LONG-TERM CARE FACILITIES / H. Tanaka (JP) - Y. Momose
P233	AN EVALUATION OF THE DEMENTIA QUALITY MARK FOR RESIDENTIAL CARE IN THE SOUTH WEST / I. Sherriff - H. McFarlane
P234	FACILITATORS AND BARRIERS TO PET FRIENDLY PRACTICES IN CARE HOMES / J. Fossey - V. Lawrence
P235	A SPECIALLY DESIGNED ENVIRONMENT AND QUALITY OF LIFE IN PERSONS WITH DEMENTIA / E. Lamb - M. Montemuro - J. Humphrey
P236	SAFEGUARDING PEOPLE WITH DEMENTIA FROM FINANCIAL ABUSE / J. Manthorpe - K. Samsi - K. Chandaria
P237	QUALITY OF LIFE IN DEMENTIA CARE - CHALLENGES IN PROXY-RATINGS / J. Gräske (DE) - S. Meyer - K. Wolf-Ostermann
P238	PERSON WITH DEMENTIA PARTICIPATION ON HIS/HER NURSING HOME CARE PLANNING MEETING. INCLUDEM PROJECT. / J. Vila-Miravent (ES) - F. Villar - M. Celdran
P240	THE AID FOR THE PEOPLE WITH ALZHEIMER'S DISEASE IN SLOVAKIA / D. Grniakova - P. Koson (SK) - M. Cunderlikova - A. Vesela - M. Wirth - K. Karolova - H. Kosalova - J. Szeifova - L. Pokorna - M. Blahova - M. Novak
P242	ADAPTING THE CARE PROFILES TO THE CANADIAN DEMENTIA CONTEXT / S. Dupuis - B. Smale - J. Gillies - C. McAiney - M. Nolan
P245	OLDER ADULTS LIVING WITH DEMENTIA: OCCUPATIONAL THERAPISTS' PERCEPTIONS OF SAFETY / S. Davidson - M. Clarke - A. Moreiro



Poster Presentations

All posters will be displayed for the entire conference.

The following presenters will stand by their board on Thursday 8 March, between 12:45 and 13:45.

Care Coordination: Case Management

P255	COST OF FORMAL CARE IN NEWLY DIAGNOSED DEMENTIA - A 3-YEAR FOLLOW-UP / C. Vossius - A. Rongve - I. Testad - A. Wimo - D. Aarsland
P256	WHAT ARE THE FACTORS PREVENTING HEALTHCARE NEEDS OF CARE HOME RESIDENTS WITH DEMENTIA FROM BEING MET? A REVIEW OF THE LITERATURE / J. Dudman
P257	WHAT ARE DEMENTIA ADVISERS AND WHAT DO THEY DO? A QUALITATIVE EXPLORATION OF THE EXPERIENCES OF DEMENTIA ADVISERS IN DEVELOPING THEIR ROLE AND THOSE WHO USE THEIR SERVICES IN WORCESTERSHIRE / J. La Fontaine - D. Brooker - J. Bray - S. K. Milosevic
P258	MAKING IT HAPPEN, STRATEGIES DEVELOPED AND LESSONS LEARNED IN DELIVERING AN EARLY INTERVENTION DEMENTIA SERVICE IN WORCESTERSHIRE / J. La Fontaine - C. Edwards
P259	EVALUATION OF THE DEM-DISC: AN ICT TOOL FOR CUSTOMIZED ADVICE ON CARE AND WELFARE SERVICES / L. Van Mierlo - F. Meiland - R.-M. Dröes
P260	DAY CARE PROGRAMS FOR PERSONS WITH DEMENTIA – IMPACT ON FAMILY CARERS? / L. Taranrød
P261	ROMANIAN CAREGIVERS' PERSPECTIVE ON ALZHEIMER'S DISEASE MANAGEMENT / A. Zamfirescu - M. Gurgu - S. Zgonea
P262	DEMENTIA CARE MANAGEMENT: ASSESSMENT IS CONTINGENT, CONTEXTUAL AND ONGOING / M. Aronson
P263	CREATING PARTNERSHIPS THROUGH SYSTEM NAVIGATION / M. Beck - N. Berkowitz - D. Schweitzer - L. Tremblay
P264	PALLIATIVE CARE IN DEMENTIA: A EUROPEAN VIEW OF THE MODELS OF PALLIATIVE CARE / N. Davies - S. Iliffe - J. Manthorpe - S. Ahmedzai
P265	GENERAL PRACTITIONERS USE OF THE INHIBITORS OF CHOLINESTERASE (IC) IN THE OLDER POPULATION / R. Katell - T. Achille (FR) - D. Thierry
P266	FACTORS OF CONTINUING CARE FOR FAMILY CAREGIVERS OF ELDERLY PEOPLE WITH DEMENTIA / T. Isowa (JP) - C. Greiner - E. Kishi - A. Fukahori - K. Matsuo - T. Oishi - N. Shimada
P267	THOUGHTS AMONG PEOPLE WHOSE PARENTS HAVE EARLY ONSET DEMENTIA / Y. Ozawa (JP) - H. T. Nakamura
P268	MANAGING EMOTIONAL JETLAG FOR PEOPLE LIVING WITH DEMENTIA: ZOE ELKINS & PENNY GARNER / Z. Elkins and Penny Garner

Person Centred Care

P269	FROM VISION TO REALITY - IMPLEMENTING BAMFORD / A. Scott
P270	AN EVALUATION OF DEMENTIA CARE IN MALTESE HOSPITAL WARDS / A. Innes - F. Kelly - C. Scerri - S. Abela
P271	TO REPORT CHALLENGES IN TAKING CARE OF ALZHEIMER'S DISEASE PATIENTS IN THE LONG TERM CARE SETTING. / P. Agarwal - A. Madan
P272	ENHANCING INTERACTIONS BETWEEN HEALTHCARE STAFF AND PEOPLE WITH DEMENTIA / B. Willemse - D. Smit - J. de Lange - A. M. Pot
P273	THE PERSON-CENTRED ENVIRONMENT AND CARE ASSESSMENT TOOL: ENSURING QUALITY RESIDENTIAL AGED/ DEMENTIA CARE SERVICE STANDARDS / C. Burke (AU) - L. Chenoweth - J. Stein-Parbury
P274	BEHAVIOURAL SUPPORTS IN ONTARIO: A HEALTH SYSTEM APPROACH TO HELP PERSONS WITH RESPONSIVE BEHAVIOURS / D. Harvey
P275	THE "KNACK" OF EXCELLENT DEMENTIA CARE / D. Troxel - V. Bell
P276	THE ENRICHED OPPORTUNITIES PROGRAMME FOR PEOPLE WITH DEMENTIA: A RANDOMISED CLUSTER CONTROLLED TRIAL OF A COMPLEX PSYCHO-SOCIAL INTERVENTION TO DELIVER PERSON-CENTRED CARE / D. Brooker - E. Argyle - A. Scally - D. Clancy

Poster Presentations

All posters will be displayed for the entire conference.

The following presenters will stand by their board on Thursday 8 March, between 12:45 and 13:45.

Person Centred Care

P279	SUPPORTING PEOPLE GROWING OLDER WITH AN INTELLECTUAL DISABILITY / H. Wilkinson - K. Watchman
P280	PEOPLE WITH DEMENTIA IN HOSPITAL: A CASE STUDY / H. Courtney-Pratt (AU) - M. FitzGerald - K. Ford - A. Robinson
P281	THE RELATIONS BETWEEN THE FAMILY CARER AND THE PERSON WITH ALZHEIMER'S DISEASE / K. Hess-Wiktor (PL)
P282	THE EN-ABLE TOOLKIT: DEVELOPING A TOOLKIT TO SUPPORT IMPLEMENTATION OF PERSON-CENTRED APPROACH TO NEED DRIVEN BEHAVIOURS / M. Winbolt (AU) - L. Chenoweth - E. Beattie - R. Nay
P283	RESISTANCE AND COOPERATION IN MORNING CARE OF PERSONS WITH DEMENTIA / M. Munch - K. Lyng
P284	INVOLVEMENT OF PEOPLE WITH DEMENTIA AND CAREGIVERS IN CULTURE CHANGE / M. Schulz
P285	A NON-INTERVENTIONAL STUDY TO INVESTIGATE FACTORS ASSOCIATED WITH ADHERENCE TO RIVASTIGMINE PATCH / M. Riepe (DE) - J. Weinman - R. Brady - C. Strohmaier
P286	FROM FEAR TO HOPE- ALZHEIMER'S TRAINING AT HOME / T. Brocklebank - M. Carpenter - E. Murphy - D. Troxel
P287	"HOURS OF RELIEF" PROJECT: A PRECIOUS TIME / P. Bevilacqua - A. Bonora - A. Fabbo and A. Draghetti, D. Mazzali, P. Artioli, Z. Amadei, A. Budri, L. Borghi, C. Confortini
P288	A SERVICE INNOVATION FRAMEWORK TO SUPPORT PERSON-CENTRED CARE FOR PEOPLE WITH DEMENTIA / P. Kotting
P289	EXPRESSIONS OF SENSE OF SELF IN PEOPLE WITH ALZHEIMER'S DISEASE IN A SUPPORT GROUP WITH SELFHOOD-PROMOTING PURPOSE / R. Hedman (SE) - G. Hansebo - B.-M. Ternstedt - I. Hellström - A. Norberg
P290	THE "CENTER FOR COGNITIVE IMPAIRMENT" IN A BIO-PSYCHO-SOCIAL FRAMEWORK / S. Pradelli - M. Zerilli - L. Marinangeli - A. Buzzo - Z. Marini - L. Terrassan - D. Salvagnin - P. Melan - C. Ferrazzi - B. Boselli - T. Fricia - F. Lorico
P291	RESEARCH OF ORGANIZATIONAL MODEL IN ALZHEIMER'S DISEASE PROGRAM YIELDS HIGH FAMILY SATISFACTION AND OUTCOMES / J. Dalessandro - S. D. Gilster
P292	PHYSICAL AND EMOTIONAL ENVIRONMENT AS AN EFFECTIVE TREATMENT IN ALZHEIMER'S DISEASE. / S. D. Gilster - J. Dalessandro
P293	GUIDELINES FOR NURSING HOMES DELIVERING END-OF-LIFE CARE TO RESIDENTS WITH DEMENTIA ACROSS THE ISLAND OF IRELAND / S. Cahill (IE) - D. Doran - M. Watson
P294	DEMENTIA CHOICES: DOES SELF-DIRECTED SUPPORT WORK FOR PEOPLE WITH DEMENTIA? / T. Williamson
P295	FAITH AND DEMENTIA: BEING WITH GOD SERIES / T. Williams
P297	DEMENTIA MONITOR: NATION WIDE SURVEY AMONGST INFORMAL CARERS / W. Werkman

Stigma

P309	A WISH TO KNOW BUT NOT ALWAYS TELL: PERSPECTIVES FROM COUPLES LIVING WITH DEMENTIA / I. Hellström (SE) - S. Torres
P310	WHY DEMENTIAS ARE SO STIGMATIZED / L. Mendoza
P312	EDUCATIONAL PROGRAM ON ALZHEIMER'S DISEASE FOR STUDENTS OF PRIMARY SCHOOL IN THE DODECANESE PREFECTURE IN GREECE / T. Velegraki - C. Kadi - T. Pardalou - A. Kaloudi - A. Platis
P313	FORMAL CAREGIVERS' ATTITUDES TOWARDS OLDER PEOPLE WITH DEMENTIA / M. Pinto - D. Figueiredo - A. Marques - V. Rocha (PT) - L. Sousa



Poster Presentations

All posters will be displayed for the entire conference.

The following presenters will stand by their board on Thursday 8 March, between 12:45 and 13:45.

Advocacy

P320	LIFE LONG COSTS OF DEMENTIA IN EUROPE- AN INCIDENCE BASED COST OF ILLNESS MODEL / A. Wimo (SE) - A. Sköldunger
P321	DEMENTIA ADVOCACY, SOCIAL MEDIA AND ELECTORAL POLITICS – THE ONTARIO ELECTION 2011 / G. Carey
P322	THE DEMENTIA INDIA REPORT AND AFTER-PROMOTING EARLY DIAGNOSIS & INTERVENTIONS / M. Varghese (IN) - S. Bharath - J. K. Roy and Alzheimers & Related Disorders Society of India

New Guidelines and Concepts in Alzheimer's Disease

P323	INTEGRATION AND AMALGAMATION IN ONTARIO: AN APPROACH TO ENHANCE ORGANIZATIONAL STRUCTURE AND INCREASE PERFORMANCE / G. Carey
P324	"PRECLINICAL" (ASYMPTOMATIC) ALZHEIMER'S: A CRITICAL ETHICAL ANALYSIS / J. Arias - P. Whitehouse
P325	IS THE CONCEPT OF RESILIENCE APPLICABLE TO A PERSON WITH DEMENTIA AND IF SO WHAT ARE THE IMPLICATIONS FOR PRACTICE? / J. Christie

Other

P326	THE 'YOUNG MEMORY GUARDIANS' CONTEST: SENSITIZING YOUTH THROUGH INTERGENERATIONAL EXCHANGE / A. Hayward - J. Evraire - R. Godin
P327	CHANGES IN PREVALENCE OF DEMENTIA IN THE COMMUNITY-DWELLING JAPANESE ELDERLY DURING SIX-YEAR FOLLOW-UP / C. Yamamoto (JP) - T. Hoshi
P328	BEYOND THE MYTHS: FORGETTING THE FICTIONS OF ALZHEIMER'S AND FACING THE FACTS / D. George - P. J. Whitehouse
P329	GLOBAL ECONOMIC COST OF DEMENTIA / J. Cziborra - M. Wortmann
P330	THE 'OPEN DOORS' NETWORK IN SALFORD, GREATER MANCHESTER: A PIONEERING APPROACH TO EMPLOYING A PERSON WITH DEMENTIA IN THE UK NATIONAL HEALTH SERVICE / J. Keady - M. Howorth - C. Riley - G. Drummond
P331	OBSERVATION ON ALZHEIMER DISEASE OVER TAIWAN / K. L. Cheng (BLA)
P332	GETTING A WORD IN EDGEWAYS: PEOPLE WITH DEMENTIA SPEAK OUT / L. Whitman
P333	NEUROPSYCHIATRIC SYMPTOM CLUSTERS DIFFERENTIALLY PREDICT BURDEN AND DEPRESSION IN CHINESE FAMILY CAREGIVERS OF PERSONS WITH ALZHEIMER'S DISEASE / S.-T. Cheng (HK) - L. C. Lam - T. C. Kwok
P334	PRODROME IN DELIRIUM AMONG LONG-TERM CARE RESIDENTS WITH AND WITHOUT DEMENTIA / P. Voyer - J. McCusker - M. G. Cole - S. Richard - J. Monette - N. Champoux - A. Ciampi - E. Belzile

Poster Presentations

All posters will be displayed for the entire conference.

The following presenters will stand by their posters on Friday 9 March between 12:45 – 13:45.

Patient and Public Involvement in Dementia Research

P074	ETHICAL DILEMMAS OF NURSES WORKING IN ELDERLY HEALTH CARE SERVICES FACILITIES AND DEALING WITH DILEMMAS IN SETTINGS OF CARING FOR ELDERLY DEMENTIA RESIDENTS / A. Fujino (JP) - Y. Momose - H. Matsuoka - N. Amaki
P075	ENGAGING CARERS AND THE LAY PUBLIC IN DEMENTIA RESEARCH: THE ALOIS EXPERIENCE / C. Struthers - A. Noel-Storr - R. McShane - J. McCleery
P076	SURVEY OF YOUNG PEOPLE WITH DEMENTIA IN TOTTORI PREFECTURE, JAPAN / C. Norikoshi (JP) - R. Yoshino - R. Iwata - C. Takai - T. Takada
P077	A STUDY OF ELDERS LIVING IN RESIDENTIAL ENVIRONMENT BASE ON NEEDS THEORY –AN EXAMPLE FROM JIAN PING DAY CARE CENTRE IN TAINAN, TAIWAN / C. Shu-Han - L. Li-Fan - C. Po-Tzung
P078	FAMILY CAREGIVERS FOR THE ELDERLY / D. M. Ndeti (KE)
P079	COMPARISON OF THE ORAL TRAIL MAKING TASK PERFORMANCES OF PATIENTS WITH ALZHEIMER'S DISEASE, MCI AND HEALTHY ELDERLY / G. Bastug - E. T. Ozel-Kizil (TR) - A. Sakarya - O. Altintas - S. Kirici
P080	EMOTIONAL CONFLICT RESOLUTION PROCESSES IN PATIENTS WITH ALZHEIMER'S TYPE OF DEMENTIA / Z. Baran - E. T. Ozel-Kizil (TR) - B. Cangoz
P081	NEUROPSYCHIATRIC SYMPTOMS IN DEMENTIA. EXPERIENCE IN A CLINICAL POPULATION OF THIRD LEVEL AND A COMMUNITY STUDY IN MEXICO / A. L. Sosa Ortiz - E. M. Longoria Ibarrola - G. I. Acosta Castillo - M. F. Velez Mijangos and 10/66
P082	LOW-THRESHOLD SUPPORT FOR FAMILIES WITH DEMENTIA AS A PART OF COMMUNITY CARE IN GERMANY / I. Hochgraeber (DE) - B. Holle - S. Bartholomeyczik
P083	PODCAST: PREVENTION OF DECLINE IN COGNITION AFTER STROKE TRIAL: A FACTORIAL RANDOMISED TRIAL OF BLOOD PRESSURE AND LIPID LOWERING / L. Stokes - S. Ankolekar - P. M. Bath
P084	INVOLVING CARERS AND PEOPLE WITH DEMENTIA IN ALZHEIMER'S SOCIETY'S RESEARCH FUNDING PROGRAMME / M. Murray - J. Pickett - C. Ballard
P085	THE DEMOGRAPHIC FEATURES OF PATIENTS WITH ALZHEIMER'S DISEASE IN TAIWAN / M.-S. Li - Y.-T. Chen - Y.-K. Huang - Y.-H. Yang - C.-H. Chen
P086	NURSING CARE FOR ELDERLY WITH DEMENTIA BEING TREATED AT GENERAL HOSPITALS / N. Amaki (JP) - Y. Momose - M. Hiroko - A. Fujino
P087	AN INNOVATIVE PATIENT AND PUBLIC INVOLVEMENT-FOCUSED MODEL FOR TRAINING IN RESEARCH / O. Bazin - C. Merritt - T. McGrath
P088	SERVICE USER INVOLVEMENT AS A MEANS TO LIVE WELL WITH DEMENTIA: A SINGLE CASE COLLABORATIVE STUDY BETWEEN A SERVICE USER AND A CLINICIAN / R. Guss - K. Oliver - I. Asquith
P089	EARLY ONSET ALZHEIMER' DISEASE COMPARED WITH LATE ONSET / S. Katayama (JP) - C. Watanabe - S. Arai
P090	EXPERIENCES OF CARERS OF PEOPLE WITH DEMENTIA IN CRISIS: FINDINGS FROM NARRATIVE INQUIRY ANALYSIS / S. Toot - R. Ledgerd - K. Burnell - J. Hoe - M. Devine - M. Orrell
P091	LESSONS LEARNED FROM PATIENT AND PUBLIC INVOLVEMENT IN THE DEVELOPMENT OF APPLICATIONS FOR THE NATIONAL INSTITUTE FOR HEALTH RESEARCH DEMENTIA THEMED CALL / T. McGrath
P092	THE UNTAPPED POTENTIAL OF PARTICIPATORY ACTION RESEARCH (PAR) TO ENGAGE PEOPLE WITH DEMENTIA AND THEIR FAMILIES IN RESEARCH: WHAT DOES THE LITERATURE TELL US? / T. Gallagher - M. Downs - A. Capstick
P093	OVERVIEW OF THE SOCIO-DEMOGRAPHIC CHARACTERISTICS OF CAREGIVER FOR PERSON WITH ALZHEIMER'S DISEASE (AD) IN TAIWAN / Y.-K. Huang - M.-S. Li - Y.-T. Chen - M.-C. Chou
P094	DISRUPTED CIRCADIAN RHYTHMS OF ACTIVITY AND SLEEP IN RELATION TO COGNITIVE FUNCTION IN PATIENTS WITH ALZHEIMER'S DEMENTIA / Y. Sun - C.-J. Lu
P095	RELATIONSHIPS BETWEEN CAREGIVERS AND SEVERITY OF ALZHEIMER'S DISEASE IN TAIWAN / Y. T. Chen - Y.-K. Huang - M.-S. Li - Y.-H. Yang
P096	A CONSULTATION WITH KEY STAKEHOLDERS TO DEVELOP A NEW RATING SCALE FOR ALZHEIMER'S / Y. Morrison



Poster Presentations

All posters will be displayed for the entire conference.

The following presenters will stand by their posters on Friday 9 March between 12:45 – 13:45.

Other Dementias

P097	DIFFERENT BIOMAKERS PROFILES IN DIAGNOSIS OF PRIMARY PROGRESSIVE APHASIA (PPA)? / A. Flé (FR) - I. Saulnier - B. Beaumatin - M.-A. Picat - G. Lapu - T. Dantoine
P098	MAINTENANCE COGNITIVE STIMULATION THERAPY (CST) FOR DEMENTIA: A SINGLE-BLIND, MULTI-CENTRE, RANDOMIZED CONTROLLED TRIAL OF MAINTENANCE CST VS. CST FOR DEMENTIA TUDY PROTOCOL / E. Aguirre
P099	OMEGA-3 POLYUNSATURATED FATTY ACIDS AND MIXED DEMENTIA / I. Culum - J. B. Orange - D. Forbes - M. Borrie
P100	HOMEOSTATIC RESPONSES DURING PROGRESSIVE TAUOPATHY IN CORTICAL PYRAMIDAL CELLS OF TAU MUTANT MICE / J. L. Crimins - A. B. Rocher - J. Lewis - J. I. Luebke
P101	COGNITIVE IMPAIRMENT IN LATE LIFE PSYCHOSIS AND IMPLICATIONS FOR TREATMENT / L. L. Tan (SG)
P102	SUPPORTING PEOPLE WITH ALCOHOL RELATED BRAIN DAMAGE ON THE SHETLAND ISLANDS, A REMOTE ISLAND COMMUNITY IN THE UK / L. McCabe - A. Innes
P103	TITLETHE EFFECT OF VITAMINE-E ON LEARNING AND MEMORY IN RAT / M. Heidarieh
P104	THE BEHAVIORAL SEQUELAE AND OXIDATIVE BURDEN FOLLOWING INTOXICATION OF TRIMETHYLTIN COMPOUND IN RATS / S. Kaur (IN) - B. Nehru
P105	THE EARLY-ONSET ALZHEIMER'S DISEASE WITH 22 MOTHS FOLLOW-UP: A CASE REPORT / Y.-T. Huang - W.-F. Wang - S.-L. Wu

Non Pharmacological Interventions

P113	AN EVALUATION STUDY ON THE EFFECTIVENESS OF IN HOME SERVICE TO PERSONS WITH EARLY STAGE OF DEMENTIA IN HONG KONG / L. K. C. Gemma - L. K. Y. Winnie - L. T. Y. Wendy (HK) - C. K. Y. Florence
P114	MAINTENANCE COGNITIVE STIMULATION THERAPY (CST) IN PRACTICE / A. Streater - E. Aguirre - A. Spector - I. Russell - R. Woods - J. Hoe - Z. Hoare - M. Orrell
P115	THE "ALZHEIMER CAFÉ": A WAY TO DON'T FEELING ALONE / A. Bonora - P. Bevilacqua - P. Artioli - Z. Amadei - A. Budri - A. Cavicchioli - L. Borghi - C. Confortini - F. Impastato - A. Fabbo
P116	USING DEMENTIA CARE MAPPING (DCM) TO DEVELOP RESON-CENTRED CARE AND PREVENT AGITATION IN NURSING HOME RESIDENTS WITH DEMENTIA / A. M. M. Rokstad - K. Engedal
P117	THE EFFECT OF THERAPEUTIC TOUCH ON BEHAVIOURAL SYMPTOMS IN A PERSON WITH ALZHEIMER'S DISEASE / B. Brignoli - R. Crespolini
P118	SPECIAL CARE CONCEPTS FOR PEOPLE WITH DEMENTIA IN ACUTE CARE HOSPITALS / B. Holle (DE) - C. Pinkert
P119	THE EFFECTS OF INDIVIDUALIZED LIVE AND RECORDED MUSIC ON PEOPLE WHO HAVE DEMENTIA AND ARE FRAIL AND THEIR CARERS / C. Garabedian
P120	EXPLORING NURSES' EXPERIENCES USING "UNDERSTANDING DIAGNOSTICS" IN DAILY CARE OF PEOPLE WITH DEMENTIA / D. Holle (DE) - M. Halek - S. Bartholomeyczik
P121	RECRUITING COMMUNITY DWELLING PEOPLE WITH DEMENTIA TO NON PHARMACOLOGICAL RESEARCH TRIALS: LESSONS FROM THE EVIDEM PROJECT / D. Lowery - J. Warner - S. Iliffe - A. Cerga-Pashoja - I. Thune-Boyle and EVIDEM
P122	ART THERAPY: "CLOWN EFFECT" WITH OLD DEMENTED RESIDENTS IN FRANCE / D. Huvent (FR) - C. Pagniez - I. Delabriere - P. Herreman and F. Puisieux
P123	IMPACT OF CEREBROVASCULAR RISK FACTORS OVER THE EVOLUTION OF DEMENTIA DUE TO ALZHEIMER'S DISEASE IN A SAMPLE OF PATIENTS WITH LOW SCHOOLING FROM SÃO PAULO, BRAZIL / F. F. Oliveira - P. H. F. Bertolucci - E. S. Chen - M. A. C. Smith
P126	THE MODERATING EFFECT OF NUTRITIONAL STATUS ON DEPRESSIVE SYMPTOMS IN VETERAN ELDERS WITH DEMENTIA A LONGITUDINAL STUDY WITH SPACED RETRIEVAL COMBINED WITH MONTESSORI-BASED ACTIVITIES / H.-S. Wu - L.-C. Lin

Poster Presentations

All posters will be displayed for the entire conference.

The following presenters will stand by their posters on Friday 9 March between 12:45 – 13:45.

Non Pharmacological Interventions

P127	THE FREQUENCY DISTRIBUTION OF DELUSION OF JEALOUSY AMONG PATIENTS WITH ALZHEIMER DISEASE AT KERMANSIAH PSYCHIATRIC CLINIC- IRAN 2007 - 2011 / J. Shakeri - N. Montazeri - H. Shakeri - N. Shakeri
P128	THE VIPS-MANUAL: A GUIDE FOR NURSING HOME STAFF ON HOW TO APPLY THE COMPLEX CONCEPTS OF PCC IN DAILY CLINICAL PRACTICE / J. Røsvik - M. Mjørud
P129	PEARL MAKING A REAL DIFFERENCE TO THE LIVES OF PEOPLE LIVING WITH DEMENTIA / J. Corrigan
P130	ART THERAPY AND COGNITIVE EXERCISES FOR ALZHEIMER'S PATIENTS AND CAREGIVERS / J. A. Vargas (PR)
P131	PHYSICAL ACTIVITY FOR PEOPLE WITH DEMENTIA: A SCOPING STUDY / L. McCabe - A. Bowes - A. Dawson - R. Jepson
P132	THE RISK OF DELIRIUM IN HOSPITALIZED COGNITIVELY IMPAIRED ELDERLY / L. Bergamini - M. Turci - M. Veschi - R. Chattat - A. Fabbo
P133	EFFECTIVENESS OF MULTISENSORY STIMULATION IN AN ALZHEIMER'S SPECIAL CARE UNIT / M. Turci - L. Bergamini - A. Bonora - G. Menabue - R. Chattat - A. Fabbo
P134	MODELING AN INTERVENTION STUDY TO IMPLEMENT AND EVALUATE "UNDERSTANDING DIAGNOSTICS" IN DAILY CARE OF RESIDENTS WITH DEMENTIA. / M. Halek - D. Holle - S. Reuther - I. Buscher - S. Bartholomeyczik
P135	THE MANAGEMENT OF PATIENTS WITH DEMENTIA: THE KEY ROLE OF AN ALZHEIMER SPECIAL CARE UNIT / A. Bonora - A. Fabbo - F. Orsi - R. Chattat - M. Turci - L. Bergamini
P136	THE GRIMM BROTHERS AGAINST ALZHEIMER'S / M. De Sant Anna
P137	THE IMPORTANCE OF OUTSIDE FOR PEOPLE WITH DEMENTIA / M. Marshall - A. Pollock
P138	WHOLE FOODS BRAIN HEALTHY NUTRITION INTERVENTION IN ASSISTED LIVING / N. B. Emerson Lombardo
P140	MUSIC THERAPY IN DEMENTIA: A SYSTEMATIC LITERATURE REVIEW USING A NARRATIVE SYNTHESIS FORMAT / O. McDermott - N. Crellin - H. M. Ridder - M. Orrell
P141	REMEMBERING TOGETHER: REMINISCENCE TRAINING (RTRT): A CROSS-EUROPEAN PROJECT ON REMINISCENCE FOR FAMILIES LIVING WITH DEMENTIA / P. Schweitzer
P142	EXAMINING THE COST EFFECTIVENESS OF DEMENTIA CARE MAPPING (DCM): INTERNATIONAL, EVIDENCE-BASED APPROACHES / P. Edwards - C. Fusek - A. Post
P143	TRANSFORMING INSTITUTIONAL PSYCHOGERIATRIC DAY CARE INTO LOW THRESHOLD COMMUNITY-BASED SUPPORT CENTRES FOR PEOPLE WITH DEMENTIA AND CARERS: AN IMPLEMENTATION STUDY / R.-M. Dröes - M. V. Dijk - F. Meiland
P144	SYSTEMATIC REVIEW AND META-ANALYSIS OF INTERVENTIONS FOR COPING IN CARERS OF PEOPLE WITH DEMENTIA / R. Li - C. Cooper - A. Austin - G. Livingston
P145	THE EFFECT OF MUSIC ON PATIENT WITH DEMENTIA AND SEVERELY DISTURBED SLEEP PATTERNS / S. Mori (JP) - Y. Kimuro
P146	DEVELOPING COGNITIVE STIMULATION THERAPY (CST) GROUPS FOR ETHNIC GROUPS / S. Mahmood - Dr Saman Ahmed - Prof Martin Orrell - Dr Hillary Kinsler
P147	CHALLENGING BEHAVIOUR IN CONTROL: A STRUCTURED MULTIDISCIPLINARY APPROACH TO THE MANAGEMENT OF BEHAVIOURAL PROBLEMS / S. Zwijssen - M. Smalbrugge - D. L. Gerritsen - A. M. Pot - J. A. Eefsting
P149	NON-PHARMACOLOGICAL TREATMENTS IN A DEMENTIA CARE UNIT: ITS USE IN A PATIENT WITH DEMENTIA DUE TO HUNTINGTON'S DISEASE / S.-J. Chen
P150	HOW MOTIVATED ARE PEOPLE WITH MILD ALZHEIMER'S DEMENTIA TO PARTICIPATE IN A NON-PHARMACOLOGICAL INTERVENTION? COMPARISON WITH OTHER PATIENTS, CORRELATES, AND PREDICTION OF OUTCOME / S. Forstmeier (CH) - L. Pfeifer - T. Roth
P151	CAN A CULTURALLY APPROPRIATE, HOME-BASED EXERCISE INTERVENTION PROGRAM ENHANCE COGNITIVE FUNCTION OF PEOPLE WITH DEMENTIA IN BANGKOK, THAILAND? / S. Karuncharempant (AU) - J. Hendricks - C. Toye - D. Galvao - R. Newton - O. Krairit



Poster Presentations

All posters will be displayed for the entire conference.

The following presenters will stand by their posters on Friday 9 March between 12:45 – 13:45.

Non Pharmacological Interventions

P152	DEMENTIA SERVICE CENTERS: A POSSIBLE STRUCTURE FOR EARLY DETECTION? / S. Auer (AT) - E. Span - Y. Donabauer - S. Weber - J. Wimmer-Elias - C. Wimmer - C. Mikenda - R. Sperling - M. Reitner - M. Muraier - A. Wiegand - K. Laschalt - D. Koukas - B. Reisberg
P153	THERAPEUTIC USE OF MUSICAL LEISURE ACTIVITIES IN MILD-MODERATE DEMENTIA: RANDOMIZED CONTROLLED TRIAL / T. Särkämö (FI) - S. Laitinen - A. Numminen - M. Kurki - M. Tervaniemi
P154	DEVELOPING A CONTINENCE ASSESSMENT TOOL SENSITIVE TO THE NEEDS OF PEOPLE WITH DEMENTIA LIVING AT HOME AND THEIR FAMILY CARERS / V. Drennan - S. Donovan - G. Rait - S. Illiffe
P155	DEMENTIA, GARDENS AND COMMUNITY / W. Brewin - A. MacDonald
P156	LEISURE ACTIVITY INTERVENTION IN EARLY TO MODERATE COMMUNITY-DWELLING DEMENTED PERSONS / Y.-C. Chiu - Y.-S. Chen - W.-C. Hsu - S.-H. Lee - C.-Y. Huang
P156A	EFFECT OF COGNITIVE TRAINING PROGRAM FOR PATIENTS WITH EARLY TO MILD DEMENTIA —A KAOHSIUNG EXPERIENCE OF MODIFIED SCHOOL OF WISDOM / C.-K. Liu - M.-C. Chou - C.-H. Li - C.-C. Wang - T.-W. Kung - L.-Y. Tang

Knowledge Translation

P157	RELATIONSHIP BETWEEN SUPPORT SERVICES, PERCEIVED CAREGIVING STRESS, AND PERCEIVED HEALTH STATUS AMONG DEMENTIA CAREGIVERS / A. Khalil (SA) - E. S. Dawood
P158	DIAGNOSTIC PROCESSES AND POST DIAGNOSTIC SUPPORT IN THE SCOTTISH HIGHLANDS / A. Innes and Paulina Szymczynska, Cameron Stark
P159	BEHAVIOURAL SUPPORT SYSTEMS – CREATING CHANGE AT THE LOCAL, PROVINCIAL AND NATIONAL LEVELS THROUGH KNOWLEDGE EXCHANGE / D. Harvey
P160	KEY FACTORS INFLUENCING IMPLEMENTATION OF CASE CONFERENCES IN DAILY CARE OF PEOPLE WITH DEMENTIA / I. Buscher (DE) - D. Holle - S. Reuther - M. Halek - S. Bartholomeyczik
P161	DEMENTIA CARE MAPPING – STAFF MEMBERS WITHIN THE IMPLEMENTATION PROCESS / T. Quasdorf (DE) - C. Riesner - M. Dichter - O. Dortmann - M. Halek

Support and Training for Informal and Professional Carers

P162	ADJUSTMENT PROCESSES IN CAREGIVERS OF PEOPLE WITH ALZHEIMER'S DISEASE / A. M. Cavaleiro (PT) - I. Leal
P164	SUPPORT AND EDUCATION AT THE ALZHEIMER SOCIETY OF MONTREAL: MEASURING CLIENT SATISFACTION / A. Hayward - T. Anuza - L. Beaumier-Grant - R. Cavaliere
P165	THE DEMENTIA EXPERIENCE: DEVELOPMENT AND EVALUATION OF A VIRTUAL REALITY EXPERIENCE OF DEMENTIA / B. J. J. Hattink - R. M. Dröes - J. Rietsema - F. J. M. Meiland
P166	AN APPROACH TO THE ANALYSIS OF THE CONVERSATION BETWEEN THE DEMENTIA PATIENTS AND THEIR HEALTHY INTERLOCUTORS / B. Valles (VE)
P167	EVALUATING A PROGRAM FOR DEVELOPMENT OF THE COMPETENCY OF CARING STAFF IN THE NORWEGIAN MUNICIPALITIES / B. S. Døble - K. R. Fossli - A. Eek - Ø. Kirkevold
P168	MARTE MEO IN THE CARE OF PEOPLE WITH DEMENTIA, A PRACTICAL AND RESPECTFUL APPROACH / C. Pull (LU) - D. Leidisch - J. Wagner and David Leidisch, Yvonne Zellweger, Diane Bleser, Bettina Waller, Rosa Pinto, Daniela Trampert, Jordis Bentz, Laurence Dupont, De Angelis Jeannine, Dana Pop, Laurie Schmit
P169	PERSPECTIVES OF NEED: RESULTS OF THE FIRST USE OF A SCOTTISH NEED ASSESSMENT IN THE GERMAN COMMUNITY CARE SYSTEM / C. Riesner (DE) - W. Schnepf - A. Zegelin

Poster Presentations

All posters will be displayed for the entire conference.

The following presenters will stand by their posters on Friday 9 March between 12:45 – 13:45.

Support and Training for Informal and Professional Carers

P170	SUPPORTING CARE AT HOME STAFF WHO CARE FOR PEOPLE WITH DEMENTIA TO DELIVER PERSON CENTRED DEMENTIA CARE: THE USE OF DEMENTIA CARE MAPPING IN DOMICILIARY CARE SETTINGS / C. Surr
P171	CAREGIVERS OF PEOPLE WITH DEMENTIA IN THE CHINESE COMMUNITIES: A REVIEW OF FINDINGS AND THE WAY AHEAD / C. Lai (HK)
P172	PLANNING THE SPONTANEOUS – IMPROMPTU VS. STRUCTURED ACTIVITIES IN DEMENTIA CARE / D. Troxel - K. Rogers - C. Lilly
P173	COMMUNICATING WELL WITH PEOPLE LIVING WITH DEMENTIA AND THEIR FAMILIES: STAND BY ME AND COME INTO MY WORLD... DVD ASSISTED TRAINING IN SKILLING UP PRACTITIONERS ACROSS THE DEMENTIA CARE PATHWAY / D. Brooker - A. Wotherspoon - S. Macreavy - K. De Vries - C. Poole
P174	"OUR STORY"..... A TEAM PERSPECTIVE, OUR JOURNEY FROM CONCEPT TO REALITY ...A PARTNERSHIP BETWEEN A FAMILY HEALTH TEAM MEMORY CLINIC AND THE ALZHEIMER SOCIETY OF LEEDS GRENVILLE / D. Wood - L. Lee
P175	DAY CARE CENTERS – EFFECTIVE FACILITATIONS FOR BURDENED CAREGIVERS OF PEOPLE WITH DEMENTIA? / F. Geese (CH) - I. L. Schaefer - C. Mischke
P176	ENHANCING THE AUTONOMY ON CAREGIVING THROUGH PARTNERSHIP WITH FAMILY CAREGIVERS IN CARE OF CLIENTS WITH DEMENTIA IN HONG KONG / G. K. Law (HK)
P177	SHIELD CARER SUPPORTER PROGRAMME: A RANDOMISED CONTROLLED TRIAL OF ONE-TO-ONE PEER SUPPORT AND LARGE GROUP REMINISCENCE FOR FAMILY CARERS OF PEOPLE WITH DEMENTIA / G. Charlesworth - M. Orrell - N. Melunsky and the SHIELD CSP-RYCT trial team
P180	SUPPORTING STAFF AND RELATIVES OF PEOPLE WITH DEMENTIA TO REDUCE ISOLATION BY CONNECTING THROUGH PUPPETRY / K. Marshall
P181	"SCHOOL FOR FAMILY CARERS" – GOVERNMENTAL INITIATIVE GIVES RESULTS / K. Hotvedt
P182	TUNISIAN ASSOCIATION ROLE: CAREGIVER SUPPORT AND TRAINING / L. Ben Hassine (TN) and Pr Leila TRABELSI ALOUANE, President of tunisian association
P183	EFFECTS OF DEMENTIA AND DEPRESSION TRAINING PROGRAMS FOR ELDERCARE STAFF / L. L. Tan (SG) and Dr Ng Li Ling; Dr Sin Gwen Li
P184	STUDENT NURSES' EXPERIENCES OF CARING FOR OLDER PEOPLE WITH DEMENTIA IN HOSPITAL: IMPLICATIONS FOR EDUCATION / L. Baillie - J. Merritt - J. Cox
P185	DIFFERENT PAIN TRAINING METHODS FOR FORMAL CAREGIVERS IN DETECTING PAIN IN RESIDENTS WITH DEMENTIA / L.-C. Lin
P186	FAMILY OF WISDOM - A NEW SERVICE MODEL IN TAIWAN / L.-Y. Tang - M.-J. Chiu - H.-J. Lee
P187	THE MARTE MEO METHOD IN DEMENTIA CARE / M. Munch - L.-H. Lunde
P189	DECISION-MAKING ABOUT TREATMENT AND CARE IN DEMENTIA / M. De Vugt - C. Wolfs - F. Stevens - F. Verhey
P192	EFFECTIVE WAYS FOR PROVIDING HEALTH CARE IN SMALL-SCALE MULTIFUNCTIONAL COMMUNITY-BASED CARE / M. Irahara (JP)
P193	"ONE SHOWS ONESELF THROUGH ONE'S ACTIONS." PROFESSIONAL CAREGIVERS' APPROACHES IN CARING FOR PEOPLE WITH DEMENTIA DISEASE AFTER VALIDATION METHOD TRAINING PROGRAMME. - ANALYSIS OF VIDEOTAPES / M. Söderlund (SE) - A. Norberg - G. Hansebo
P194	PEER SUPPORT FOR CARERS OF PEOPLE WITH DEMENTIA: PERCEPTIONS OF BENEFITS FOR CARERS AND VOLUNTEERS / N. Greenwood - R. Habibi - A. Mackenzie - V. Drennan - N. Easton
P195	COGNITIVE THERAPY AT ALZHEIMER DEMENTIA / O. Bundaleska - M. Bojadzievski - L. Neloska
P196	SYSTEMATIC REVIEWS ON BEHAVIOURAL AND PSYCHOLOGICAL SYMPTOMS OF DEMENTIA / R. Van Der Linde - B. C. Stephan - G. Savva - T. Denning - C. Brayne



Poster Presentations

All posters will be displayed for the entire conference.

The following presenters will stand by their posters on Friday 9 March between 12:45 – 13:45.

Support and Training for Informal and Professional Carers

P197	IMPROVING ADHERENCE AND PERSISTENCE TO CHOLINESTERASE INHIBITOR THERAPY IN ALZHEIMER'S DISEASE: DEVELOPMENT OF THE CARETOCARE™ CAREGIVER SUPPORT PROGRAM / R. Brady - J. Walburn - J. Weinman - C. Strohmaier
P198	ACTUAL STATE OF DEMENTIA CARE PROVIDED BY CAREGIVERS AT NURSING HOMES / S. Hara (JP) - S. Yoshioka - S. Araki - M. Ono
P199	USE OF A INNOVATIVE PART-TIME CARE FACILITY FOR PEOPLE WITH DEMENTIA IN SWITZERLAND – AN EVALUATION STUDY / S. Oppikofer (CH)
P200	PSYCHOTHERAPEUTIC METHODS IN THE TRAINING PROGRAMS FOR PROFESSIONALS IN DEMENTIA CARE / S. Aavaluoma (FI) - R. Soisalo
P201	DISTRESS AND WORK-RELATED HEALTH AND WELL-BEING OF PROFESSIONAL NURSES CAUSED BY CHALLENGING BEHAVIOUR OF RESIDENTS IN NURSING HOMES – A LONGITUDINAL DATA ANALYSIS / S. G. Schmidt (DE) - M. Dichter - B. H. Müller - H.-M. Hasselhorn
P202	DEVELOPMENT OF A TRAINING PROGRAMME FOR VOLUNTEER PEER SUPPORTERS OF FAMILY CARERS OF PEOPLE WITH DEMENTIA / G. Charlesworth - S. Ahmad - M. Orrell - T. Sullivan and on behalf of the SHIELD CSP team
P203	ALZHEIMER'S DISEASE ILLNESS REPRESENTATIONS AMONG SOCIAL WORKERS AND NURSES / S. Altman (IL) - P. Werner - M. Cohen
P204	TRAINING ELDERCARE WORKERS IN DEMENTIA CARE – FINDINGS FROM THE PILOT RUN OF THE DEMACT PROGRAMME / H. J. Koh - S. L. Tan (SG) - P. P. J. Lim - Y. C. Kuo - X. Tan - A. T. Lin - Y. C. Lau
P205	EXCEPTIONAL TRAINING, SUPPORT AND RETENTION FOR STAFF IN A DEDICATED ALZHEIMER'S FACILITY ENHANCES RESIDENT AND FAMILY SATISFACTION / J. Dalessandro - S. D. Gilster
P206	ADDRESSING BEHAVIORAL CHALLENGES THROUGH COMPASSIONATE COMMUNICATION / T. Shanahan
P208	ILLNESS PERCEPTION AND POSITIVE MENTAL HEALTH IN FAMILY CARERS OF PEOPLE WITH DEMENTIA / V. Orgeta - E. Lo Sterzo - M. Orrell
P210	THE DEVELOPMENT OF A TRAINING PROGRAMME FOR INFORMAL CAREGIVERS OF OLDER PERSONS WITH DEMENTIA IN MACAU SAR, CHINA / W. Zeng (MO) - K. V. Iat - B. L. Gar - I. L. Wei
P210A	"ONE MORE WAY TO SHOW THAT YOU CARE", S. Rabbab

Leisure and Meaningful Experiences in Dementia

P211	ACT, BELONG, COMMIT TO SINGING: A HEALTHY WAY TO LIVE FOR PERSONS WITH DEMENTIA AND THEIR CARE-GIVERS / D. Ebel (AU)
P212	ANIMAL ASSISTED ACTIVITY: VOLUNTARY ACTIVITY IN FACILITIES IN JAPAN / F. Umemoto (JP) - H. Shibanaï
P213	DELAYING THE PROGRESS OF DEMENTIA CONDITION AMONG THE ELDERLY IN JAPAN / K. Kanzaki-Sooudi (JP) - R. Terui - A. Shikanai
P214	THE EFFECT OF DIFFERENT FORMS OF MUSIC ON THE PATIENT WITH DEMENTIA / M. Heyns (ZA) - H. Du Plessis
P215	'HEY, SHE'S LOOKING AT ME!' -DEVELOPING AND IMPLEMENTING AN ART KIT TO ENHANCE COMMUNICATION WITH PEOPLE WITH DEMENTIA / M. K. Herz (IL)

Poster Presentations

All posters will be displayed for the entire conference.

The following presenters will stand by their posters on Friday 9 March between 12:45 – 13:45.

Leisure and Meaningful Experiences in Dementia

P216	TO EXPLORE THE LIVED EXPERIENCES OF CLIENTS WITH DEMENTIA TOWARD LOSS OF SPOUSE IN HONG KONG / O. S.-K. Sin (HK) - G. K. Law - W. K. Lui
P217	IMPACT OF MEETING PLACE FOR PERSON WITH DEMENTIA: A QUALITATIVE RESEARCH / R. Chattat - L. Mazzoni - P. Berti - E. Mariani - A. Fabbo and The cesena working group on meeting place
P218	IMPORTANCE OF FUN IN THE DEMENTIA EXPERIENCE / S. Commins
P219	MEANINGFUL MOMENTS: ACTIVITIES FOR PEOPLE WITH DEMENTIA / T. Shanahan
P220	EARLY ONSET ALZHEIMERS PROGRAM JAPAN "THE PERSON HIMSELF" / T. Katsuda (JP) and "the person himself" interchange program

Dementia Friendly Communities

P246	THE TRANSITIONAL (OBJECT) SPACE / C. Murphy
P248	PLYMOUTH UNIVERSITY DEMENTIA RESEARCH TEAM / I. Sherriff - H. McFarlane
P249	DEVELOPMENT OF THE ENVIRONMENT FOR ELDER'S CARE BY PROFESSIONAL ENVIRONMENTAL ASSESSMENT PROTOCOL (PEAP) - A CASE STUDY OF DE HUEI YUAN CONSERVATION CARE CENTER IN TAINAN, TAIWAN / M. S. Wu - Y. T. Huang - P. T. Chen - C. M. Chang
P250	OUR COMMUNITY, OUR STORIES: PROMOTING A HOLISTIC VIEW OF PEOPLE WITH DEMENTIA / P. Bresba
P251	DESIGNING INNOVATIVE DAYCARE CENTERS FOR THE ELDERLY WITH DEMENTIA IN TAIWAN / P. T. Chen - L. F. Liu - M. S. Wu
P252	THE STUDY OF SPECIALIZING CARE UNIT AND MIXED CARE UNIT FOR THE ELDERLY WITH DEMENTIA -A CASE STUDY OF YMCA TWO DAY-CARE CENTERS IN TAINAN, TAIWAN / P. T. Chen - L. J. Chu - C. L. Hsu - R. Y. You
P253	THE DEMENTIA FRIENDLY CITIES NETWORK / S. Henry (BE)
P254	DO SHARED-HOUSING ARRANGEMENTS CONTRIBUTE TO A BETTER NUTRITIONAL STATUS OF CARE-DEPENDENT PEOPLE WITH DEMENTIA? - RESULTS FROM A ONE-YEAR FOLLOW-UP IN GERMANY / S. Meyer (DE) - J. Gräske - A. Worch - K. Wolf-Ostermann

Risk Factors and Prevention

P298	"LOOKING UPSTREAM": MAKING SENSE OF THE CHANGING LANDSCAPE OF ALZHEIMER'S DISEASE / D. George - S. D'Alton
P299	EFFECTS OF INTELLECTUAL HABITS, LEISURE AND PHYSICAL ACTIVITY OVER THE AGE OF ONSET AND EVOLUTION OF DEMENTIA DUE TO ALZHEIMER'S DISEASE / F. F. Oliveira - P. H. F. Bertolucci - E. S. Chen - M. A. C. Smith
P300	EPIDEMIOLOGY OF DEMENTIA IN SÃO PAULO, BRAZIL: RISK FACTORS AND AGE OF ONSET OF DEMENTIA DUE TO ALZHEIMER'S DISEASE / F. F. Oliveira - P. H. F. Bertolucci - E. S. Chen - M. A. C. Smith
P301	A LIFESTYLE-BASED, PRIMARY PREVENTION PROGRAM FOR DEMENTIA / M. Loeff - H. Walach (DE)
P302	'THE BRAIN STATION' DIGITAL SUITE OF TOOLS, SERVICES AND WORKFLOWS FOR PREVENTION, EARLY INTERVENTION AND SELF CARE IN DEMENTIA / K. Saad - P. Smith - G. Wedgwood



Poster Presentations

All posters will be displayed for the entire conference.

The following presenters will stand by their posters on Friday 9 March between 12:45 – 13:45.

Risk Factors and Prevention

P303	A MODEST PROPOSAL FOR A LONGITUDINAL STUDY OF DEMENTIA PREVENTION (WITH APOLOGIES TO JONATHAN SWIFT, 1729) / R. P. Friedland - S. Nandi
P305	FALLS AMONGST OLD PEOPLE RECEIVING HOME CARE SERVICES / S. Holm - G. Berglund - M. Andersen
P306	OCCUPATIONAL RISK FACTORS FOR ALZHEIMERS DISEASE IN SWEDEN: A NATIONWIDE EPIDEMIOLOGICAL STUDY / X. Li (SE)
P307	INCIDENCE AND RISK FACTORS OF DEMENTIA IN TWO COMMUNITIES IN BEIJING / Y. Huang - Z. Liu - C. Zhuo - S. Li - M. Prince
P308	A FOLLOW UP STUDY OF DEMENTIA IN TWO COMMUNITIES IN BEIJING / Y. Huang - Z. Liu - C. Zhuo - S. Li - M. Prince

Art and Dementia

P314	EVALUATING AN ARTS-BASED INTERVENTION TO IMPROVE MEDICAL STUDENT ATTITUDE TOWARDS PERSONS WITH DEMENTIA: A MIXED METHODS STUDY / D. George
------	--

Media and Dementia

P315	"MY BELOVED" - THE FACE OF ALZHEIMERS. A WONDERFUL FILM AND OUTREACH PROGRAM THAT OFFERS UNDERSTANDING AND FIGHTS SHAME AND SOLITUDE. / B. M. Tveit - K. Lavik
P316	CREATING BEHAVIOR CHANGE COMMUNICATIONS: A CASE STUDY / F. Kharas
P317	LIVING WITH ALZHEIMER'S PATIENTS / M. A. Hoppe (AT) and Documentary film - a tool for empowering "Living with Alzheimer's patients"
P318	KONFETTI IM KOPF - A GRASSROOTS AWARENESS CAMPAIGN TAKING ANOTHER LOOK AT DEMENTIA AND PROMOTING A SHIFT OF PARADIGM. / M. Hagedorn (DE)
P319	USING VIDEO TO TELL A DIFFERENT STORY / S. Milton

Author's Index

Last Name	First Name	Abstract Programme No.
Aarsland	Dag	OC034, P106, P255
Aavaluoma	Sanna	P200
Abe	Shine	P030
Abela	Stephen	P270
Abushakra	Susan	OC002, OC079A
Achille	Tchalla	P265
Acosta Castillo	Gilberto	P050, P081
Adaigho	Israel	P067
Adler	Christine	OC083
Agarwal	Pinky	P271
Aghajanov	Mikhail	P054
Agogiatou	Christina	OC092
Aguirre	Elisa	P098, P114
Ahmad	Shaheen	P202
Ahmedzai	Sam	P264
Ahtiluoto	Satu	OC108
AIBL investigators		OC037
Akrami-a	Alimohammad	P036
Alegria	Renne	OC016
Allen	Shelley	P013
Allsop	David	OC005
Altintas	Ozge	P079
Altman	Shiri	P203
Alvarez	Isabel	P064
Amadei	Zoraide	P115, P287
Amador	Sarah	OC089
Amaki	Nobuko	P074, P086
Ames	David	OC035, OC037
Andersen	Margret	P305
Anderson	Phil	OC022, OC074
Andreou	Panayiota	OC038
Andrieu	Sandrine	OC106
Ankolekar	Sandeep	P083
Anuza	Teresa	P164
Anvari	Morteza	P037, P043
Apostolova	Liana	P107
Arai	Sawako	P089
Araki	Saori	P198
Arazkhani	Victoria	P043
Argyle	Elaine	P276
Arias	Jalayne	P324
Aronson	Miriam	P262

Last Name	First Name	Abstract Programme No.
Årslund	Dag	P107
Artioli	Paola	P115, P287
Asquith	Ian	P088
Atkinson	Joanna	P049
Auer	Stefanie	OC083, P152
Auerbach	Sanford	P038
Austin	Allana	P144
Avetisyan	Avetis	P054
Azekawa	Takaharu	P030
Bagheri	Seyed Majid	P036
Bail	Kasia	OC022
Bailey	Simon	OC115
Baillie	Lesley	P184
Baiyewu	Olusegun	OC012
Bajic	Vladan	P003
Bakoglidou	Evaggelia	OC092
Ballard	Clive	OC053, OC102, OC123, P084
Bamidis	Panagiotis	P021
Baran	Zeynel	P080
Barbash	Shahar	OC029
Barham	Elizabeth	P012
Barlow	Carrolee	OC004
Barney	Anna	P072
Bartholomeyczik	Sabine	P082, P120, P134, P160
Bartlett	Ruth	OC116
Barzegar-Befroei	Neda	P109
Bashardoost	N.	P018
Bastug	Gulbahar	P079
Bath	Philip	P083
Batsila	Georgia	OC092
Bazin	Olivier	P087
Beattie	Elizabeth	P044, P282
Beaumat	Betty	P097
Beaumier-Grant	Laurence	P164
Beck	Mona	P263
Bell	Jane	OC058
Bell	Jean-Paul	OC091
Bell	Virginia	P275
Belzile	Eric	P334
Ben Hassine	Lamia	P182
Bengtsson	Johan	OC122



Author's Index

Last Name	First Name	Abstract Programme No.
Benshu	Zhang	P073
Bergamini	Lucia	P132, P133, P135
Berglund	Gro	P305
Berkowitz	Naomi	P263
Bermejo	Félix	P064
Bernate	Mara	OC003, P034
Berti	Pietro	P217
Bertolucci	Paulo	OC087, P051, P123, P299, P300
Bevilacqua	Petra	P115, P287
Beyer	Mona	OC034, P107
Bharath	Srikala	OC100, P322
Blahova	Magdalena	P240
Blom	Marco	OC044
Boatemah	Dorothy	P228
Bojadzievski	Miroslav	P195
Bolso	M	OC016
Bonora	Annalisa	P115, P133, P135, P287
Borghi	Luciano	P115, P287
Borrie	Michael	P099
Boselli	Barbara	P290
Bosmans	Judith	OC019
Bottino	C	OC016
Boulay	Mérodie	OC015, P111
Bowes	Alison	P131
Bowley	Karen	OC094
Boza-Calvo	Carolina	P063
Brady	Roseanna	P197, P285
Bray	Jennifer	OC094, P257
Brayne	Carol	OC031, P052, P196
Bresba	Paola	P250
Brewin	Wendy	P155
Brignoli	Barbara	P117
Brocklebank	Trevor	P286
Brodaty	Henry	OC077, OC091, OC098
Brooker	Dawn	OC094, OC095, P173, P257, P276
Brooks	Deborah	OC017, P110
Bruijs	Anne-Marie	OC099
Bruvik	Frøydisb	P230
Bryden	Paul	OC086
Budri	Aldo	P115, P287

Last Name	First Name	Abstract Programme No.
Bueno	Yolanda	P034
Bundaleska	Olivera	P195
Bunn	Frances	P052
Burke	Chanel	P273
Burnell	Karen	P090
Burns	Alistair	SS01, OC102, P031, P049
Burns	Michelle	OC113
Burton	Emma	OC075
Buscher	Ines	P160
Buscher	Innes	P134
Buzzo	Amedeo	P290
Cahill	Suzanne	P293
Calero	Miguel	P064
Cammer	Allison	P047
Campbell	Ross	OC116
Campion	Peter	OC121
Campman	Carlijn	P019
Cangoz	Banu	P080
Capstick	Andrea	P092
Carelli-Alinovi	Cristiana	OC010
Carey	Gale	OC020, P321, P323
Carmona	Pedro	P064
Carpenter	Molly	P286
Cartz Piver	Leslie	OC047
Casey	Anne-Nicole	OC091
Casey	Mavourneen	P044
Cavaleiro	Ana Margarida	P162
Cavaliere	Raffaella	P164
Cavallin	Lena	P106
Cavicchioli	Annamaria	P115
Celdran	Montse	P238
Cerga Pashoja	Arlinda	OC085, P121
Champoux	Nathalie	P334
Chan	Cherry	OC027
Chan	Natalie	OC022
Chandaria	Karishma	P236
Chang	Chia Ming	P249
Charlesworth	Georgina	OC117, P177, P202
Charras	Kevin	OC090
Chattat	Rabih	P132, P133, P135, P217
Cheetham	Craig	OC011

Author's Index

Last Name	First Name	Abstract Programme No.
Chen	Chung-Hung	P085
Chen	Chun-Hung	P041
Chen	Ciao-Yei	OC065
Chen	Elizabeth	OC087, P051, P123, P299, P300
Chen	Po Tsung	P249, P251, P252
Chen	Shaw-Ji	P149
Chen	Yu-Tsung	P085, P093, P095
Chen	Yu-Shu	P156
Cheng	Kwok Leung	P331
Cheng	Sheung-Tak	P333
Chenoweth	Lynn	OC091, OC098, P273, P282
Cherepanov	Vsevolod	P014
Chernii	Viktor	P014
Chiamenti	Andrea	P022, P023
Chiu	Ming-Jang	OC065, P186
Chiu	Yi-Chen	P156
Cho	Kwangwook	P013
Chou	Mei-Chuan	P156A, P093
Chow	Nicole	P107
Christie	Julie	P325
Chu	Leung-Wing	OC027, OC110
Chu	Li Jung	P252
Ciampi	Antonio	P334
Cid	Teresa	OC003
Cilesi	Ivo Giovanni	P027, P028
Clancy	David	P276
Clarke	Marieke	P245
Clement	Jean Pierre	OC047
Clifton	Peter	OC035
Cluxton	Robert	OC066
Codemo	Alessandra	P022, P023
Cohen	Miri	P203
Cole	Martin	P334
Coley	Nicola	OC106
Collinge	John	P001
Colloby	Shaun	OC075
Cominetti	Márcia	P012
Commins	Sue	P218
Confortini	Cinzia	P115, P287
Connell	Stephanie	P057
Cooke	Marie	P044
Cooper	Claudia	P025, P144

Last Name	First Name	Abstract Programme No.
Corbett	Anne	OC053, OC102, OC123
Corrigan	Jason	P129
Couratier	Philippe	OC047
Courtenay	Ken	OC030, P029
Courtney-Pratt	Helen	P280
Couture	Mélanie	OC119
Cox	Janet	P184
Crans	G.	OC0079A
Crans	Gerald	OC002
Crean	StJohh	OC109
Crellin	Nadia	OC117, P140
Crespolini	Rosangela	P117
Crimins	Johanna	P100
Cronk	Carol	OC050
Crossley	Margaret	P047
Culum	Ivan	P099
Cunderlikova	Maria	P240
Curry	Lisa	OC051
Cziborra	Jane	P329
Dalessandro	Jennifer	OC066, P205, P291, P292
D'Alton	Simon	P298
Dantoine	Thierry	P097
Dashti-R	Mohammad Hossein	P018, P033, P036, P037, P043
Davidson	Sylvia	OC064, P245
Davies	Nathan	P264
Dawood	Eman	P157
Dawson	Alison	P131
De Araujo	Heloisa	P012
De Lange	Jacomine	P222, P272
De Rooij	Sophia	OC019
De Sant Anna	Martha	P136
De Vries	Kay	P173
De Vugt	Marjolein	P189
Dehghanpoor	Abolfazl	P036
Delabriere	Isabelle	P122
Demory	Mathilde	OC090
Dening	Tom	P196
Denmark	Tanya	P049
Depla	Marja	OC014
Devine	Mike	P090
Dewhurst	Felicity	OC032



Author's Index

Last Name	First Name	Abstract Programme No.
Dewhurst	Matthew	OC032
Dichter	Martin	P161, P201
Dierckx de Casterlé	Bernadette	OC071
Dijk	Marijke	P143
do Vale	Francisco	P012
Døble	Betty	P167
Dobranici	Letitia	P061
Donabauer	Yvonne	P152
Donnison	Debbie	P226
Donovan	Sheila	P154
Doran	Daphne	P293
Dortmann	Olga	P161
Dotchin	Catherine	OC032
Downs	Murna	OC045, P092
Draghetti	A.	P287
Draper	Brian	OC022, OC074
Dregan	Alex	OC076, P017
Drennan	Vari	P154, P194
Dröes	Rose	P165
Dröes	Rose-Marie	OC122, P143, P259
Drummond	Gillian	P330
Du Plessis	Hernene	P214
Ducharme	Francine	OC119
Dudman	Jenny	P256
Dumoitier	Nathalie	OC047
Dupuis	Sherry	OC018, OC084, P242
Dutton	Rachael	P110
Easton	Nicky	P194
Ebel	Dorothy	P211
Edwards	Carole	P258
Edwards	Paul	P142
Eefsting	Jan	P147
Eek	Arnfinn	P167
Ehrlich	Michelle	OC004
Elkins	Zoe	P268
Ellis	Kathryn	OC035, OC037
Emerson Lombardo	Nancy	P038, P138
Enache	Daniela	P106
Engedal	Knut	P060, P116, P230
Eriksdotter Jönhagen	Maria	P106

Last Name	First Name	Abstract Programme No.
Etches	Cheryl	OC094
Evraire	Jocelyne	P326
Eynard	Colette	OC090
Fabbo	Andrea	P115, P132, P133, P135, P217, P287
Fahey	Mark	P013
Farin	Faraneh	OC072
Farmer	Michael	P001
Farrow	Mark	P001
Faure	Angelique	OC047
Fearon	Patricia	P070
Feliu	Anna	P064
Ferguson-Coleman	Emma	P049
Ferrari	Arianna	P022, P023
Ferrazzi	Cinzia	P290
Figueiredo	Daniela	OC103, P313
Firbank	Michael	OC075
FitzGerald	Mary	P280
Flé	Aurélié	P097
Fleeman	Michelle	OC005
Fleming	Richard	OC091, OC098
Flicker	Leon	OC033
Florence	Cheung	P113
Forbes	Dorothy	P047, P099
Forbes	Ian	OC098
Ford	Karen	P280
Foroughan	Mahshid	OC080, P059
Forstmeier	Simon	OC055, OC107, P150
Fossey	Jane	P234
Fossli	Kari	P167
Fowler	Hollie	OC096
Francis	Paul	P026
Francke	Anneke	OC014
Franco Martin	Manuel	OC003, P034
Frantzidis	Christos	P021
Freir	Darragh	P001
Fricia	Tiziana	P290
Friedland	Robert	P303
Fritze	Friederike	P107
Frost	Alison	OC009
Fujii	Hiroko	P030
Fujino	Ayumi	P074, P086

Author's Index

Last Name	First Name	Abstract Programme No.
Fukahori	Atsuko	P223, P266
Fusek	Carol	P142
Fuseler	John	OC007
Gabelli	Carlo	P022, P023
Galeazzi	Fulvio	P073A
Gallagher	Tricia	P092
Gallo	C	OC016
Galvao	Daniel	P151
Gandy	Sam	OC004
Gar	Bo Lau	P210
Garabedian	Claire	P119
Gardener	Samantha	OC035
Gardiner	Larry	OC116
Garner	Penny	P268
Garrard	Peter	P072
Gaughan	Anna	P241
Gausdal	Margit	P060
Geall	Ruth	P049
Geese	Franziska	P175
Gemma	Law	P113
George	Daniel	OC042, P298, P314, P328
George	Danny	P065
Georgiou	Eirini	OC038
Gerritsen	Debby	P147
Gevorgyan	Elmira	P054
Ghaemmagham Farahani	Zia	P059
Giaglis	Georgios	OC092
Giardina	Bruno	OC010
Gibson	Diane	OC022, OC074
Gillette-Guyonnet	Sophie	OC106
Gillies	Jennifer	P242
Gilster	Susan	OC066, P205, P291, P292
Giuliano	Angele	OC122
Godderis	Jan	OC071
Godin	Reginald	P326
Goh	Kim Huat	OC013
Gollin	Donata	P022, P023
Gonzalez	Ricardo	OC122
Gonzalez Palau	Fátima	OC003, P034
Gonzalez-Concepcion	Juan	P056

Last Name	First Name	Abstract Programme No.
Gonzalez-Velasquez	Francisco	OC007
Gonzalez-Viruet	Maribella	P056
Goodenough	Belinda	OC091
Goodman	Claire	OC089, P052
Gove	Dianne	OC045
Graff	Maud	P035
Granö	Sirpa	OC069
Gräske	Johannes	OC120, P237, P254
Gray	William	OC032
Grealish	Laurie	OC022
Greenwood	Nan	P194
Gregori	Maria	OC005
Gregoric Kramberger	Milica	P106
Gregory	Cynthia	OC011
Gregory	Sarah	OC051
Greiner	Chieko	P223, P266
Griffin	Mark	OC081
Grniakova	Darina	P240
Grypdonck	Mieke	OC071
Gu	Yian	OC035
Gulliford	Martin	OC076, P017
Gupta	Veer	OC035
Gurgu	Minerva	P261
Guss	Reinhard	P088
Haas	Marion	OC098
Habibi	Ruth	P194
Hafarian	Leila	OC080
Hafarian	Lila	OC072
Hagedorn	Michael	P318
Haghani	Masoud	P032
Hakobyan	Marianna	P054
Halek	Margareta	P120, P134, P160, P161
Hamers	Jan	OC041
Hampson	Grace	OC094
Hansebo	Görel	P193, P289
Hara	Sachiko	P198
Harris	Erica	P038
Hart	Cathryn	OC006, OC121
Harvey	David	P159, P274
Hasselhorn	Hans-Martin	P201
Hattink	Bart	P165



Author's Index

Last Name	First Name	Abstract Programme No.
Haugen	Per	P060
Hayes	Gillian	P026
Hayward	April	P164, P326
Head	Richard	OC035
Hedman	Ragnhild	P289
Heidarieh	Mansoureh	P103
Hellman	Riitta	P110
Hellström	Ingrid	P289, P309
Hendricks	Joyce	P151
Henry	Sabine	P253
Hernandez	C.	OC0079A
Herreman	Philippe	P122
Hertogh	Cees	OC014
Herz	Michal K	P215
Hess-Wiktor	Katarzyna	P281
Heymanson	Cynthia	OC068
Heyns	M	P066
Heyns	Malan	P214
Hick	Caroline	OC116
Hilton	Andrea	OC121
Hiroko	Matsuoka	P086
Hoare	Zoe	P031, P114
Hochgraeber	Iris	P082
Hodges	Angela	P108
Hoe	Juanita	P090, P114
Holle	Bernhard	P082, P118
Holle	Daniela	P120, P134, P160
Holm	Solrun	P305
Honarpisheh	Hedieh	P107
Hoppe	Maria A.	P317
Horbury	Kate	OC112
Hoshi	Tanji	P327
Hosseini	Seyed Mahmood	P037
Hotvedt	Kirsti	P181
Houle	Sylvain	P005
Houston	Agnes	OC116
Howorth	Mike	P330
Hseih	Tusty-Jiuan	P041
Hsu	Chi Ling	P252
Hsu	Wen-Chuin	P156
Huang	Chien-Ying	P156
Huang	Yao-Ting	P105
Huang	Yen- Kai	P085

Last Name	First Name	Abstract Programme No.
Huang	Yen-Kai	P093, P095
Huang	Yi Ting	P249
Huang	Yueqin	OC105, P307, P308
Hudson	Charles	OC022
Hudspith	Richard	P026
Humble	Laurel	OC112
Humphrey	Janis	P235
Huvent	Dominique	P122
Hylen Ranhoff	Anette	P230
Iat	Kio Van	P210
Ilievski	Dragan	P003
Iliffe	Steve	OC081, OC085, P052, P121, P154, P264
Impastato	Francesco	P115
Innes	Anthea	OC052, P046, P047, P102, P158, P270
Irahara	Minoru	P192
Isowa	Tokiko	P223, P266
Itami	Akira	P030
Itzhaki	Ruth	OC009
Iwamoto	Toshihiko	P030
Iwata	Rica	P076
Jacklin	Kristen	OC118
Jackson	Lynn	OC043
Jafari	Zahra	P059
Jahangiri	Mina	OC072, OC080
Jain	Priya	OC081
James	Ian	OC006, OC121
Janahmadi	Mahyar	P032
Jelic	Vesna	P106
Jeon	Yun-Hee	OC098
Jepson	Ruth	P131
Jessen	Frank	SS02
Jimenez-Velazquez	Ivonne Z	P056
Joling	Karlijn	OC088
Jones	Glynn	OC005
Jones	Rob	OC121
Jones	Roy	OC002, OC079A
Jutilla	Karan	OC093
Juva	Kati	OC069
Kadi	Christina	P312

Author's Index

Last Name	First Name	Abstract Programme No.
Kailainathan	Sumangali	P013
Kaloudi	Aggeliki	P312
Kanaya	Kiyoshi	P030
Kanzaki-Sooudi	Kazuyo	P213
Kapoor	Arun	P015
Karagianni	Maria	P021
Karapetyan	Alexandra	P054
Karapetyan	Astghik	P054
Karmel	Rosemary	OC022, OC074
Karlova	Katarina	P240
Karuncharempanit	Sirikul	P151
Katayama	Sadao	P089
Katell	Rabier	P265
Katona	Cornelius	P025
Katsuda	Toshiko	P220
Kaur	Sukhwinder	P104
Keady	John	P049, P330
Kehoe	Sarah	OC082
Kelly	Fiona	P270
Kelly	Lynsey	P025
Kempen	Gertrudis	OC041
Keogh	Jennifer	OC035
Kershaw	Kath	OC068
Khalil	Amal	P157
Khan	A	SS03
Kharas	Firdaus	P316
Khodayar	Mohsen	P036
Kilborn	Kerry	P057
Kim	Soong Ho	OC004
Kimuro	Yukari	P145
King	Madeleine	OC098
Kingston	Paul	OC122
Kinsler	Hillary	P146
Kirici	Sevinc	P079
Kirkevold	Øyvind	P167
Kishi	Emiko	P223, P266
Kisoli	Aloyce	OC032
Kivipelto	Miia	OC108
Knapp	Martin	P031
Koh	Hwan Jing	P204
Koizumi	Kiyoshi	P030
Kokou	Agoudavi	OC046
Kong	Yuenan	P042

Last Name	First Name	Abstract Programme No.
Kontoravdi	Cleo	P004
Kosalova	Henrieta	P240
Koson	Peter	P240
Kotarek	Joseph	OC007
Kotting	Piers	P288
Koukas	Damianos	P152
Kounti	Fotini	OC092
Kovalska	Vladyslava	P009, P014
Kozakova-Valchuk	Alia	P063
Krairit	Orapitchaya	P151
Kung	Ta-Wei	P156A
Kuo	Yen Chun	P204
Kurki	Merja	P153
Kvaal	Kari	OC040
Kwok	Timothy	P333
La Fontaine	Jenny	OC095, P257, P258
La Sala	Angela	P022, P023
Laatikainen	Tiina	OC108
Ladas	Aristea	P021
Lai	Claudia	P171
Laitinen	Sari	P153
Lam	Karen	OC110
Lam	Linda	P333
Lamb	Elizabeth	P235
Lapu	Gregory	P097
Larsen	Frode Kibsgaard	P053
Laschalt	Karin	P152
Lau	Yu Cheng	P204
Lavik	Karina	P315
Law	Gemma	P176, P216
Lawrence	Vanessa	P234
Laws	Simon	OC035
Leal	Isabel	P162
Lebedev	Alexander	OC034
Ledgerd	Ritchard	P090
Lee	Huey-Jane	OC065, P186
Lee	Linda	P174
Lee	Shwu-Hua	P156
Lefford	Frances	OC081
Leidisch	Detlef	P168
Lengyel	Imre	P109
Leung	Daryl	OC094



Author's Index

Last Name	First Name	Abstract Programme No.
Leven	Netta	P035
Lewis	Jada	P100
Lewis-Holmes	Elanor	P025
Li	Chien-Hsun	P156A
Li	Min-shan	P085, P093, P095
Li	Ryan	P144
Li	Shuran	OC105, P307, P308
Li	Xinjun	P306
Liao	Yung-Feng	P015
Li-Fan	Liu	P077
Lilly	Cynthia	P172
Lim	Ping Ping	P204
Lin	Ai Ting	P204
Lin	Li-Chan	P126, P185
Link	Pille	OC001
Litherland	Rachael	OC058
Little	Ann	OC057
Liu	Ching-Kuan	P156A
Liu	Li Fan	P251
Liu	Yong	OC036
Liu	Zhaorui	OC105, P307, P308
Livingston	Gill	P025, P144
Lloyd	Dafydd	P002
Lloyd	Joanne	OC115
Lo Sterzo	Elena	P208
Lobach	Iryna	SS03
Loef	Martin	P301
Loiselle	Lisa	OC018, OC084
Longdon	Anna	OC032
Longoria Ibarrola	Erika Mariana	P050, P081
Lorico	Fabio	P290
Losada	Raquel	OC003, P034
Losytskyy	Mykhaylo	P009
Losytskyy	Mykhaylo	P014
Lovestone	Simon	P108
Low	Lee-Fay	OC077, OC091
Lowe	Stephen	OC115
Lowery	David	OC085, P121
Lu	Chien Jung	P020
Lu	Chien-Jung	P094
Lu	Xiaojie	P042

Last Name	First Name	Abstract Programme No.
Luebke	Jennifer	P100
Lui	Winnie	P216
Lunde	Linn-Heidi	P187
Luscombe	Georgina	OC098
Lyketsos	Constantine	OC002
Lyng	Kolbein	P283
Ma	Daqing	P002
Ma	Tao	P042
Macadam	Alison	OC056
Macaulay	S	OC035
Macauley	Lance	OC037
MacDonald	Angie	P155
Mackenzie	Ann	P194
Macneil Vroomen	Janet	OC019
Macreavy	Sean	P173
Madan	Arina	P271
Maercker	Andreas	OC107
Mahmood	Sajida	P146
Maldonado	Aleyda	P056
Malet	Emily	OC062
Mansour	Diane	P227
Manthorpe	Jill	P236, P264
Manvelyan	Hovhannes	P054
Manzine	Patrícia	P012
Mariani	Elena	P217
Marinangeli	Luigi	P290
Marini	Zeudi	P290
Markou	Nefeli	OC092
Markova	Ivana	OC121
Marques	Alda	OC103, P313
Marshall	Jane	P049
Marshall	Karrie	P180
Marshall	Mary	P137
Martin	Mike	OC055
Martínez	Pablo	P064
Martins	Ralph	OC011, OC037
Martins	Ralph	OC035
Masserini	Massimo	OC005
Masters	Colin	OC037
Masters	Colin	OC035
Mathie	Elspeth	OC089
Matsuo	Kana	P223, P266
Matsuoka	Hiroko	P074

Author's Index

Last Name	First Name	Abstract Programme No.
Matthews	Fiona	OC031
Mavrodaris	Angelique	P045
Mazzali	D.	P287
Mazzoni	Luana	P217
Mbachi	Toochukwu	OC028
McAdam	Nancy	OC116
McAiney	Carrie	OC084, P242
Mccabe	Louise	OC052, P046, P102, P131
McCall	Elizabeth	OC112
McCleery	Jenny	P075
McCusker	Jane	P334
McDermott	Orii	P140
McFarlane	Helen	P055, P233, P248
Mcgettrick	Grainne	OC048
McGrath	Terry	P087, P091
McKillop	James	OC116
McLaughlin	Edward	OC116
McNeilly	Elaine	P052
McShane	Rupert	OC033, P040, P070, P071, P075
Meiland	Franka	OC019, P143, P165, P259
Meiyun	Zhang	P073
Melan	Paola	P290
Melunsky	N.	P177
Menabue	Giacomo	P133
Mendoza	Lilia	P310
Merritt	Claire	P087
Merritt	Jane	P184
Meyer	Saskia	OC120, P237, P254
Middleton	Nicos	OC038
Mikenda	Cornelia	P152
Milicevic	Zorka	P003
Milosevic	Sarah	P257
Milton	Steve	OC059, P319
Miranda-Castillo	Claudia	P224
Mirvakili	Malekolsadat	P033
Mischke	Claudia	P175
Misiti	Francesco	OC010
Mittelman	Mary	OC067, OC088
Miyamoto	Misa	OC042
Mizrahi	Romina	P005
Mjorud	Marit	P128

Last Name	First Name	Abstract Programme No.
Modebe	Ifeoma	OC028, P067
Moglan	Maria	P061
Mojdeh	M.	P018
Molina	Marina	P064
Moll van Charante	Eric	OC019, OC079
Momose	Yumiko	P074, P086, P232
Mondal	Alinda	OC011
Monette	Johanne	P334
Moniz-Cook	Esme	OC006, OC121, P031
Montazeri	Nosratolah	P127
Monteiro	Isabel	SS03
Montemuro	Maureen	P235
Moor	Caroline	OC055
Moreiro	Amanda	P245
Morgan	Debra	P047
Mori	Sachiko	P145
Morris	Gary	OC114
Morris	Steve	P025
Morrison	Yvonne	P096
Morshedi	Abbas	P033
Mortby	Moyra	OC107
Moss	Melissa	OC007
Moyle	Wendy	P044
Mukherjee	Amit	OC051
Müller	Bernd	P201
Munch	Marianne	OC097, P187, P283
Murauer	Maria	P152
Murphy	Catherine	P246
Murphy	Ed	P286
Murray	Matt	OC053, OC123, P084
Myers	Tanya	OC115
Nakamura	Hiromi	P267
Nan	Jiang	P073
Nandi	Shivani	P303
Navab	Elham	OC061
Nay	Rhonda	P282
Ndetei	David	P078
Negarandeh	Reza	OC061
Nehru	Bimla	P104
Neloska	Lence	P195
Nemes	Vanda	P072



Author's Index

Last Name	First Name	Abstract Programme No.
Newell	Rob	OC045
Newsom	Dina	OC096
Newton	Robert	P151
Ngandu	Tiia	OC108
Nicholson	Caroline	OC089
Nicoll	Andrew	P001
Nielsen	T. Rune	P069
Nikolaidou	Evdokia	OC092
Nikolic	Dragana	P072
Nilforooshan	Ramin	P010
Njelita	Ifeoma	OC028
Noel-Storr	Anna	OC033, P070, P075
Nogueira	M	OC016
Nolan	Mike	P242
Norberg	Astrid	P193, P289
Norikoshi	Chie	P076
Novak	Michal	P240
Nubukpo	Philippe	OC047
Nugent	Chris	OC122
Numminen	Ava	P153
O'Brien	John	OC075
O'Connell	Megan	P047
O'Donovan	James	OC075
O'Dwyer	Siobhan	P044
Ohadi	Mina	P008
Oishi	Tomoko	P266
Oliveira	Fabricio	OC087, P051, P123, P299, P300
Oliver	Keith	P088
Omar	Rumana	P025
O'Meara	Tim	OC037
Ono	Mitsumi	P198
Ooishi	Tomoko	P223
Oppikofer	Sandra	OC070, P199
Orange	Joseph	P099
Orgeta	Vasiliki	P031, P208
Orrell	Martin	OC117, P031, P090, P114, P140, P146, P177, P202, P208
Orsi	Flavia	P135
Ortiz Moreno	Federico	P229
Osorio	Ricardo	SS03
Ouwehand	Marco	OC044

Last Name	First Name	Abstract Programme No.
Ouzouni	Fani	OC092
Ozawa	Yoshiko	P267
Ozel-Kizil	Erguvan	P079, P080
Pace	Jessica	OC118
Paddick	Stella-Maria	OC032
Pae	Lauren	OC051
Pagniez	Claire	P122
Palermi	Federico	OC111
Panico	Silvia	P001
Papacostas	Savvas	OC038
Papadopoulos	Andrew	P221
Papastavrou	Evridiki	OC038
Pardalou	Tsampika	P312
Parra	Esther	OC003, P034
Pavarini	Sofia	P012
Perez	Laura	P034
Perry	George	P065
Peruzzi	Anna	P022, P023
Peters	Owen	P039
Peto	Tunde	P109
Peut	Ann	OC022, OC074
Peyrovi	Hamid	OC061
Pfeifer	Livia	P150
Picat	Marie-Agnes	P097
Pickett	James	OC053, OC054, OC123, P084
Pinkert	Christiane	P118
Pino	Maribel	OC015, P111
Pinto	Margarida	OC103, P313
Platis	Anastasios	P312
Pokorna	Lenka	P240
Poli	Sarah	P022, P023
Polizzi	Karen	P004
Pollock	Annie	P137
Pollock	Bruce	P005
Poole	Cheryl	P173
Poole	Sophie	OC109
Popescu	Cristina	P061
Poptsi	Eleni	OC092
Porsteinsson	A.	OC0079A
Post	Aukje	P142
Pot	Anne Margriet	P147, P222, P272
Potparevic	Biljana	P003
Po-Tzung	Chen	P077

Author's Index

Last Name	First Name	Abstract Programme No.
Powell	John	P045
Pradelli	Samantha	P290
Preston	Chris	OC009
Prince	Martin	OC105, P307, P308
Proitsi	Petroula	P108
Puisieux	François	P122
Pull	Caroline	P168
Putland	Ellen	OC011
Quasdorf	Tina	P161
Quinn	Terrance	P070, P071
Rabbab	S	P210A
Rainey Smith	Stephanie	OC037
Rainey-Smith	Stephanie	OC035
Rait	Greta	P052, P154
Rao	Girish	OC100
Rapp	David	OC081
Raymont	Vanessa	OC051
Reed	J	OC007
Rees	Glenn	OC054
Reisberg	Barry	SS01, SS03, SS04, P152
Reitner	Maria	P152
Reppermund	Simone	OC077
Reuther	Sven	P134, P160
Richard	Edo	OC110A
Richard	Sylvie	P334
Ridder	Hanne Mette	P140
Riepe	Matthias	P285
Riesner	Christine	P161, P169
Rietsema	Jan	P165
Rigaud	Anne-Sophie	OC015, P111
Riley	Cathy	P330
Risse	Emmanuel	P001
Ritchie	Craig	OC033, OC051, P109
Roast	Joel	OC091
Robertson	Duncan	OC104
Roberts-Stride	Katie	OC006
Robins	Jan	OC062
Robinson	Andrew	P280
Robinson	Louise	P052
Robles	Lydia	P056
Rocha	Vânia	OC103, P313

Last Name	First Name	Abstract Programme No.
Rocher	Anne	P100
Rogers	Katherine	P049
Rogers	Khristine	P172
Rokstad	Anne Marie Mork	P116
Rollings	Anne	P226
Román-Garita	Norbel	P063
Rongve	Arvid	P107, P255
Rose	Ellen	OC025
Rosenberg	Francesca	OC112
Røsvik	Janne	P128
Roth	Tanja	P150
Rowe	Christopher	OC035, OC037
Roy	Amy	SS03
Roy	Jacob	P322
Ruaro	Cristina	P022, P023
Ruiz	Saray	P064
Ruiz	Yuri	OC003, P034
Rusjan	Pablo	P005
Russell	Ian	P031, P114
Saad	Karim	P302
Saibil	Helen	P001
Sakai	Minoru	P030
Sakarya	Aysegul	P079
Salazar-Sánchez	Lizbeth	P063
Salehi	Masomeh	OC080
Salvagnin	Daniela	P290
Sampaiolese	Beatrice	OC010
Samsi	Kritika	P236
Santana	C	OC016
Särkämö	Teppo	P153
Saulnier	Isabelle	P097
Savitch	Nada	OC017, P110
Savva	George	OC031, P196
Scales	Kezia	OC115
Scally	Andrew	P276
Scarmeas	Nikolaos	OC035
Scerri	Charles	P270
Schaefer	Iris	P175
Scheltens	Philip	OC088
Schmidt	Sascha	P201
Schneider	Justine	OC115
Schnepp	Wilfried	P169



Author's Index

Last Name	First Name	Abstract Programme No.
Schulz	Mary	OC063, P284
Schulze	Eva	P110
Schweitzer	Diana	P263
Schweitzer	Pam	P141
Scoltock	Simon	P013
Scott	Ann	P269
Seeher	Katrin	OC077
Segers-Nolten	Ine	P009
Seiger	Ake	P059
Semertzidou	Anastasia	P021
Sewell	Martin	OC024
Shah	Tejal	OC011
Shakeri	Hania	P127
Shakeri	Jalal	P127
Shakeri	Nazanin	P127
Shamsuddin	Faizul	OC013
Shanahan	Teresa	P206, P219
Sherriff	Ian	P055, P233, P248
Shibanai	Hiroko	P212
Shikanai	Azusa	P213
Shimada	Natsuko	P266
Shoemark	Deborah	P013
Shu-Han	Chuang	P077
Shulman	Melanie	SS03
Shum	David	P044
Simmons	Andrew	P108
Sin	Olive Shuk-Kan	P216
Singh Rao	Simarjit	OC109
Sitskoorn	Margriet	P019
Sköldunger	Anders	P320
Slominskii	Yury	P009
Smalbrugge	Martin	P147
Smale	Bryan	P242
Smit	Dieneke	P222, P272
Smit	Filip	OC088
Smith	Edward	P010
Smith	Marilia	OC087, P051, P123, P299, P300
Smith	Pauline	OC094, P302
Söderlund	Mona	P193
Sohrabi	Hamid	OC011
Soininen	Hilkka	OC108
Soisalo	Raul	P200

Last Name	First Name	Abstract Programme No.
Solarovic	Bosiljka	P003
Solis	Abdel	OC003, P034
Solomon	Alina	OC108
Song	Youqiang	OC027, OC110
Soreq	Hermona	OC029
Sosa Ortiz	Ana	P050, P081
Soto-Ortega	Deborah	OC007
Soumpourou	Aikaterini	OC092
Sousa	Liliana	OC103, P313
Span	Edith	OC083, P152
Spector	Aimee	P031, P114
Sperling	Roland	P152
Spitzer	Peter	OC091
Steele	John	OC004
Steeman	Els	OC071
Stefanescu	Silvia	OC122
Stefani	Ioanna	P004
Stein-Parbury	Jane	OC098, P273
Stephan	Blossom	OC031, P196
Stevens	Fred	P189
Stewart	Norma	P047
Stokes	Graham	OC006, OC060, OC062, OC121
Stokes	Lynn	P083
Stott	David	P070
Strandberg	Timo	OC108
Streater	Amy	P114
Strohmaier	Christine	P197, P285
Struthers	Caroline	P075
Strydom	Andre	OC030
Sullivan	T.	P202
Subramaniam	Vinod	P009
Sudbury	Fiona	OC104
Sun	Yu	P020, P094
Suridjan	Ivonne	P005
Surr	Claire	OC062, P170
Swaffer	Kate	OC023, OC078
Sworn	Katie	P052
Szeifova	Jana	P240
Szoeke	Cassandra	OC035, OC037
Tabet	Naji	P010
Taddei	Kevin	OC035, OC037
Takada	Teruo	P076

Author's Index

Last Name	First Name	Abstract Programme No.
Takai	Chie	P076
Talassi	Erika	P022, P023
Tamburini	Elena	OC122
Tan	Lay Ling	P101, P183
Tan	Siew Leng	OC038
Tan	Xuanhong	OC038
Tanaka	Haruna	P232
Tang	Li-Yu	P156A, OC065, P186
Tanlongo	Federica	P073A
Taranrød	Liv	P260
Taylor	Mark	OC005
Taylor	Richard	OC049
Te Boekhorst	Selma	OC014
Teodorczuk	Andrew	OC032
Ternestedt	Britt-Marie	P289
Terrassan	Lauretta	P290
Terui	Rena	P213
Tervaniemi	Mari	P153
Testad	Ingelin	P255
Thierry	Dantoine	P265
Thompson	Paul	P107
Thompson	Rachel	OC101
Thorogood	Margaret	P045
Thune-Boyle	Ingela	OC081, P121
Thuné-Boyle	Ingela	OC085
Toledano	Adolfo	P064
Tolmachev	Olexiy	P009
Toot	Sandeep	P090
Toribio	Jose Miguel	P034
Torossian	Carol	SS03
Torres	Sandra	P309
Toye	Christine	P151
Tredinnick	Marcus	OC121
Tremblay	Lucie	P263
Tretyakova	Iryna	P014
Troxel	David	OC096, P172, P275, P286
Tsei	Mei-Lan	P041
Tsolaki	Magda	OC092, P021
Tudose	Catalina	P061
Tuomilehto	Jaakko	OC108
Turci	Marina	P132, P133, P135
Turuelo	Cristina	OC003, P034

Last Name	First Name	Abstract Programme No.
Tveit	Bjarte Moerner	P315
Tyler	Susan	P013
Ulstein	Ingun	OC040, P230
Umemoto	Fumiko	P212
Upton	Dominic	OC094
Uwakwe	Richard	OC028, P067
Vahidimehrjardi	Alireza	P018
Valla	Jon	P038
Valles	Beatriz	P166
van de Ven	Peter	OC088
van der Horst	Henriette	OC088
van der Linde	Rianne	OC031, P196
van der Roest	Henriëtte	OC122
van der Schot	Astrid	OC054
van der Ven	Peter	OC019
van Gool	Willem	OC079
van Hout	Hein	OC110A, OC088
van Marwijk	Harm	OC088
van Mierlo	Lisa	OC019, P259
van Rossum	Erik	OC041
Vanderpoel	R	P066
Vargas	Jose Antonio	P130
Varghese	Mathew	P322
Vario	Maddalena	P073A
Velayudhan	Latha	P108
Velegraki	Theodosia	P312
Velez Mijangos	Monserrat	P081
Vellas	Bruno	OC106
Verbeek	Hilde	OC041
Verdile	Giuseppe	OC011
Verhey	Frans	P189
Vernooij-Dassen	Myrra	OC045, P035
Veschi	Mara	P132
Vesela	Alzbeta	P240
Viatour	Géraldine	OC090
Videaud	Helene	OC047
Vila-Miravent	Josep	P238
Villar	Feliciano	P238
Vivas	Ana	P021
Vizcaychipi	Marcela	P002
Volkov	Sergiy	P014
Voyer	Philippe	P334
Wagner	Jacqueline	P168



Author's Index

Last Name	First Name	Abstract Programme No.
Wahlund	Lars	P059
Wahlund	Lars-Olof	P106
Walach	Harald	P301
Walburn	Jessica	P197
Waldemar	Gunhild	P069
Walker	Richard	OC032
Wallace	Daphne	OC116
Walls-Ingram	Sheena	P047
Walsh	Dominic	P001
Wang	Bo-Jeng	P015
Wang	Chin-Chi	P156A
Wang	Luning	OC036
Wang	Wen-Fu	P105
Warner	James	OC085, P121
Warry	Wayne	OC118
Watanabe	Chigusa	P089
Watchman	Karen	OC021, P279
Watson	Judy	P013
Watson	Max	P293
Watson	Roger	OC006
Watson	Rosie	OC075
Watts	Helena	P002
Weeks	Dot	OC024
Weaving	Gary	P010
Weber	Sabine	P152
Wedgwood	Geoff	P302
Wei	In Lei	P210
Weinman	John	P197, P285
Wendy	Li	P113
Werkman	Wendy	P297
Werner	Perla	P203
Westman	Eric	P106
Wey	Stephen	OC017
Whitaker	Chris	OC006
Whitehouse	Peter	OC042, P065, P324, P328
Whitman	Lucy	P332
Wiegand	Amelie	P152
Wilcock	Jane	OC081
Wilkie	Jocelyn	OC039
Wilkinson	Heather	P279
Willemsen	Bernadette	P222, P272
Williams	Kate	OC111
Williams	Tricia	P295

Last Name	First Name	Abstract Programme No.
Williamson	Toby	OC026, P294
Willoughby	Julie	OC094
Wilson	Alan	P005
Wilson	Danielle	OC051
Wilson	Kirsty	OC062
Wimmer	Claudia	P152
Wimmer-Elias	Julia	P152
Wimo	Anders	P255, P320
Winblad	Bengt	P106
Winbolt	Margaret	P282
Wink	Michael	OC001
Winnie	Lui	P113
Wirth	Maria	P240
Withall	Adrienne	OC074
Wolf-Ostermann	Karin	OC120, P237, P254
Wolfs	Claire	P189
Woll	Bencie	P049
Wood	Denise	P174
Woods	Bob	OC121
Woods	Robert	P031, P114
Worch	Andreas	OC120, P254
Wortmann	Marc	P329
Wotherspoon	Alison	P173
Wozniak	Matthew	OC009
Wu	Hua-Shan	P126
Wu	Meng Shan	P249, P251
Wu	Shey-Lin	P105
Wu	Shyh-Jong	P041
Xu	Aimin	OC110
Yamamoto	Chisako	P327
Yang	Yuan-Han	P085, P095
Yarmoluk	Sergiy	P009, P014
Yates	Lauren	P031
Yoshino	Ryu	P076
Yoshioka	Sachiko	P198
You	Ru Yuh	P252
Young	Alys	P049
Yudong	Wang	OC110
Zafeiropoulos	Stavros	OC092
Zafeiropoulou	Myrto	OC092
Zamfirescu	Andreea	P261
Zegelin	Angelika	P169
Zeinali	Faezeh	P037

Author's Index

Last Name	First Name	Abstract Programme No.
Zeng	Wen	P210
Zerilli	Mario	P290
Zgunea	Silvana	P261
Zhang	Xi	OC036
Zhou	Bo	OC036
Zhou	Lin	OC110
Zhuo	Chuanjun	OC105, P307, P308
Zwakhlen	Sandra	OC041
Zwijssen	Sandra	OC014, P147

[illegible]

[illegible]



Bupa

LEADING THE WAY IN DEMENTIA CARE AROUND THE WORLD

Putting the Person First and dementia second

From funding research and delivering training programmes, to raising awareness with the public and policymakers, our dementia care is built around a deep understanding and respect for the person living with dementia.

This means we can positively engage with each individual and offer an environment and spirit of community which helps them.

www.bupa.co.uk/dementia

DEMYSTIFYING THE CLINICAL TRIAL EXPERIENCE:

PERSPECTIVES FROM THE PATIENT, CAREGIVER,
AND HEALTH CARE PROVIDER

Please join this compelling satellite symposium to hear inspirational testimony from Alzheimer's patients, caregivers, clinical researchers, and staff during the 27th International Conference of Alzheimer's Disease International.



Thursday, 8 March 2012

12.45 - 13.45

ExCel London

ICC, Capital Suite: Level 3

Rooms 14, 15, and 16

London, United Kingdom

